

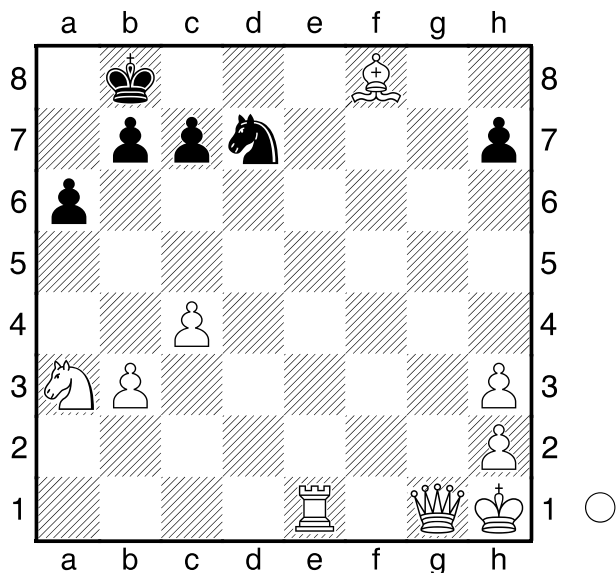
□ Snigula,Levi

■ Droege,Felix

OWL U10 Einsteiger

09.04.2022

[Husemann,D]



Weiß am Zuge. 33.Te8#
1-0

□ Kleine,Levke

■ Droege,Felix

OWL U10 Einsteiger Runde 309.04.2022

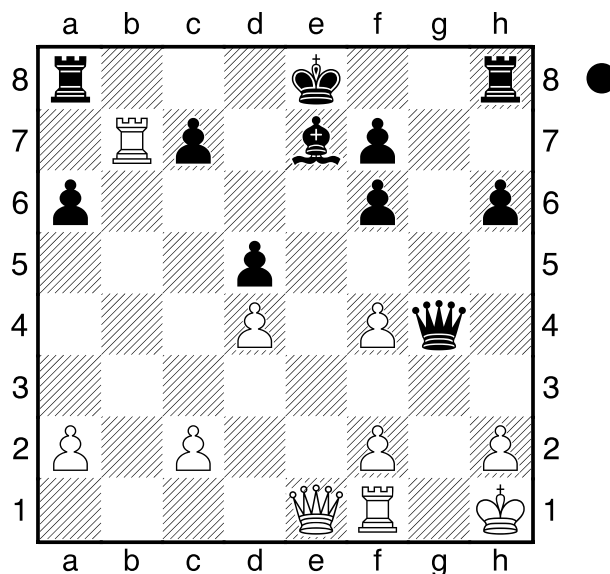
[Husemann,D]

(Diagramm)

Schwarz am Zuge. Matt in 2 Zügen.

19...Df3+ 20.Kg1 Tg8#

0-1

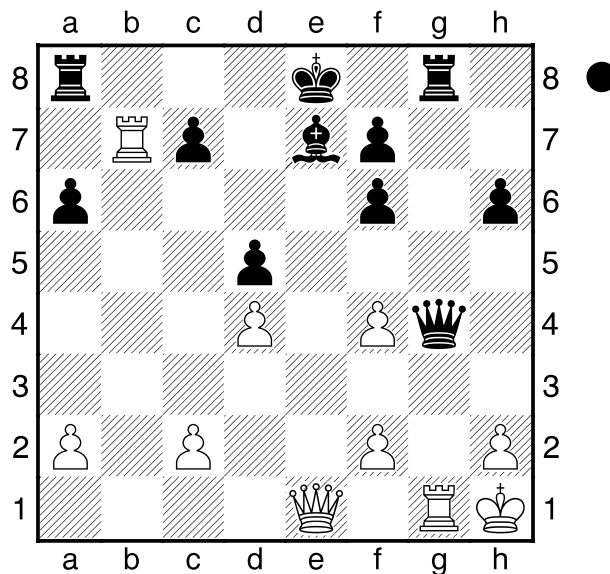


□ Kleine,Levke

■ Droege,Felix

OWL U10 Einsteiger Runde 309.04.2022

[Husemann,D]



Schwarz am Zuge. Matt in 2 Zügen.

20...Df3+ 21.Tg2 Dxd2#

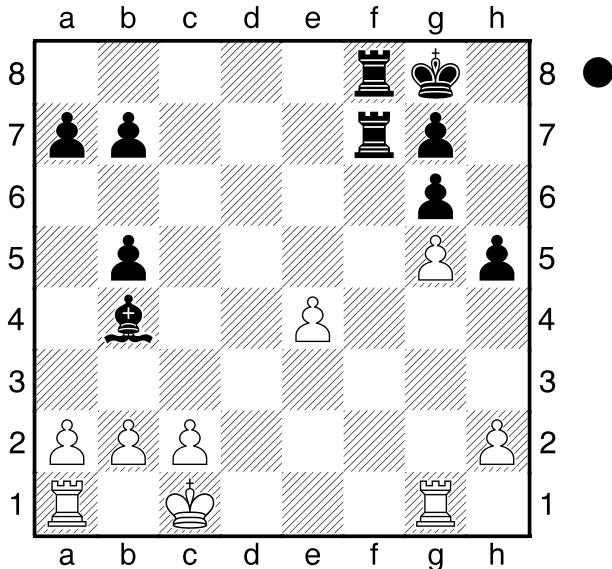
0-1

☐ **Snigula,Levi**

■ **Möller,Benjamin**

OWL U10 Einsteiger Runde 410.04.2022

[Husemann,D]



Schwarz am Zuge. Matt in 2 Zügen.

23...Tf1+ 24.Txf1 Txf1#

0-1

☐ **Peperkorn,Frederik**

■ **Droege,Felix**

OWL U10 Einsteiger Runde 410.04.2022

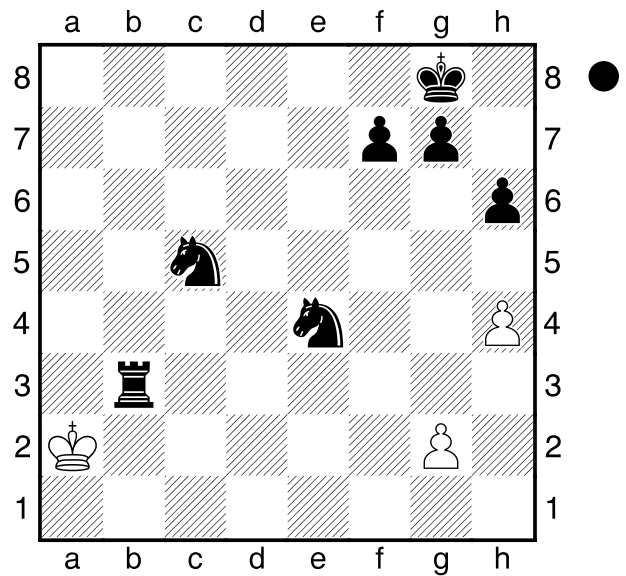
[Husemann,D]

(Diagramm)

Schwarz am Zuge. Matt in 2 Zügen.

40...Sc3+ 41.Ka1 Tb1#

0-1

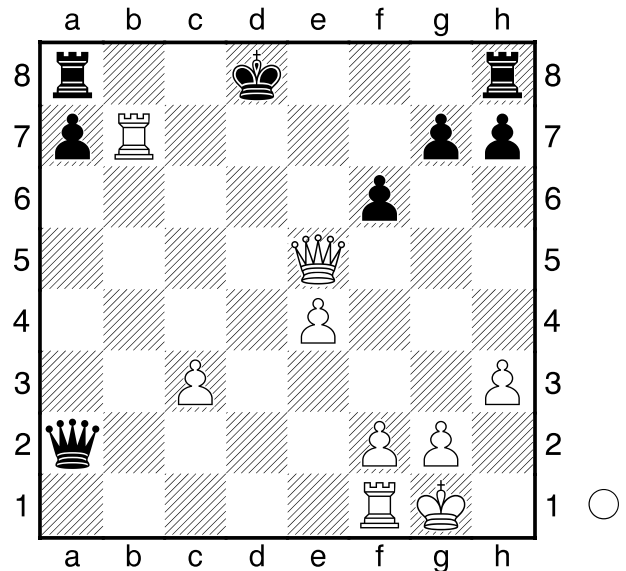


☐ **Möller,Benjamin**

■ **Bäumer,Erik**

OWL U10 Einsteiger (1. Runde) 09.04.2022

[Husemann,D]



Weiß am Zuge. Matt in 2 Zügen (3

Möglichkeiten). **24.Dd6+**

[24.De7+ Kc8 25.Dd7# (25.Dc7#)]

[24.Dc7+ Ke8 25.De7#]

24...Kc8

[24...Ke8 25.De7#]

25.Dd7#

[25.Dc7#]
1-0

