

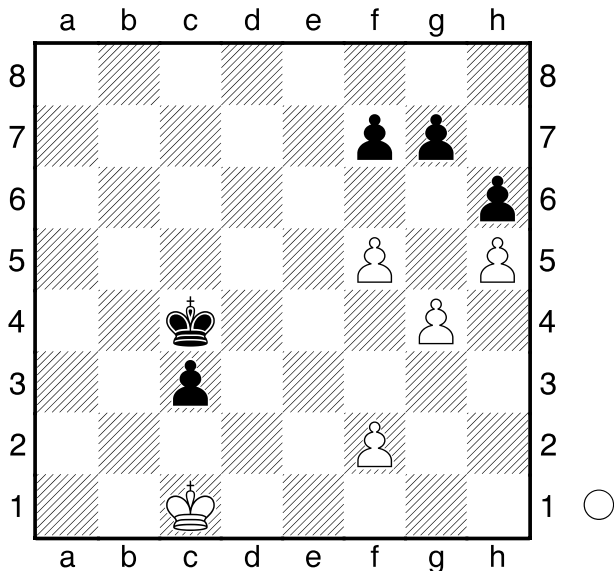
☐ Lasker,Eduard

■ Moll,Kurt

Berlin

1904

[Husemann,D]



Weiß am Zuge.

1.f6!

[1.f4? war die Patiefortsetzung, die schnell verlor. f6 2.g5 Kd4]

1...gxf6 2.f4 Kd5 3.g5 fxg5 4.fxg5 Ke6 5.gxh6 Kf6 6.Kc2!

☐ Areshchenko,A

■ Vidity,S

Abu Dhabi

2014

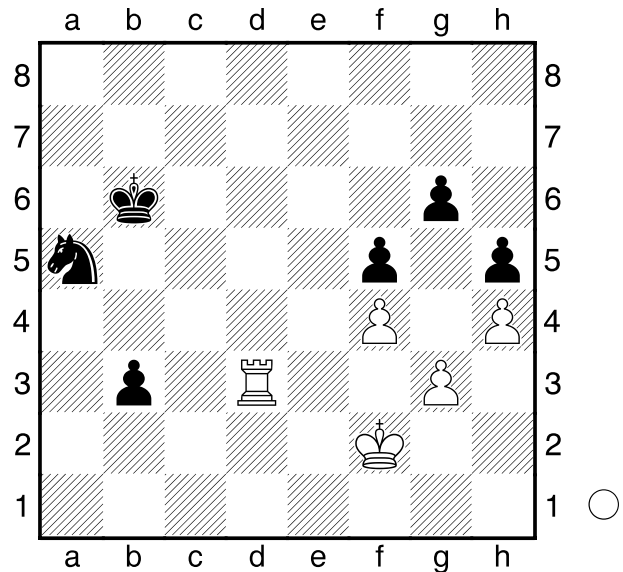
[Husemann,D]

(Diagramm)

Soll sich der weiße König über e2 oder e3 annähern?

1.Ke2?

[1.Ke3! b2 2.Td1 Sc4+ 3.Kd4 Sd2 4.Ke5 b1D 5.Txb1+ Sxb1 6.Kf6 Sd2 7.Kxg6 Se4 8.Kxh5 Sxg3+ 9.Kg5 Kc5 10.h5 Sxh5 11.Kxh5 Kd5 12.Kg6 Ke6 13.Kg5 Ke7



14.Kxf5 Kf7=]

1...b2 2.Td1 Sc4 3.Tb1

[3.Kd3 Sa3 4.Kd4 b1D 5.Txb1+ Sxb1 6.Ke5 Sd2 7.Kf6 Se4+ 8.Kxg6 Sxg3-+]

3...Kc5 4.Kd3 Kb4 5.Kd4 Kb3 6.Te1 Sd2 7.Te8 b1D 8.Tb8+ Kc2 9.Txb1 Sxb1 10.Ke5 Sc3 11.Kf6 Se4+ 0-1

☐ Smirnow

■ Bernan

UdSSR

1972

[Husemann,D]

(Diagramm)

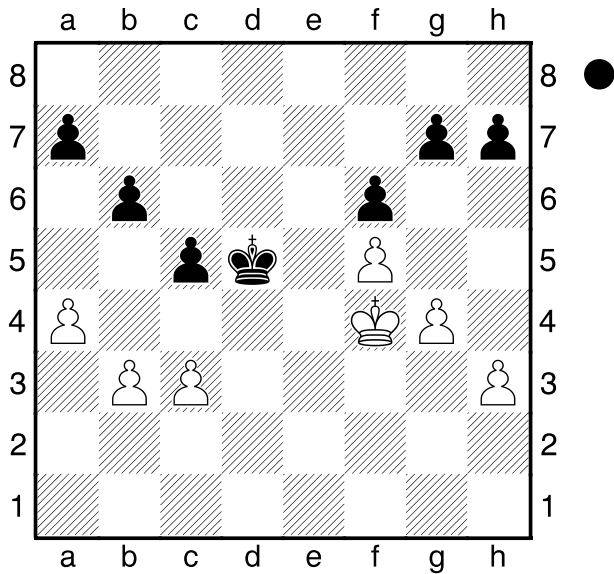
Schwarz am Zuge.

1...a5 2.Ke3 h5! 3.Kf3

[3.Kd3 hxg4 4.hxg4 c4+ 5.bxc4+ (5.Kc2 cxb3+ 6.Kxb3 Kc5-+) 5...Kc5 6.Kd2 Kxc4 7.Kc2 b5 8.axb5 Kxb5-+]

3...c4 4.b4 b5!

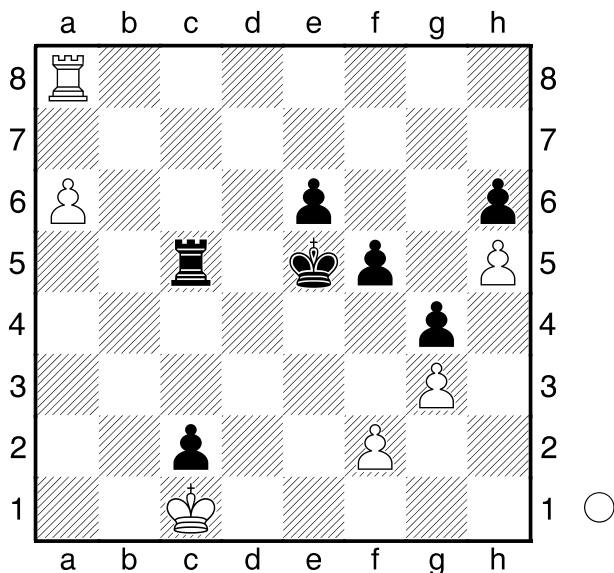
0-1



7.Txh6 Kxf2 8.Tg6 f4 9.h6 fxg3
 10.Tf6+ Kg1 11.h7+-)]
1...Tc7! 2.Th8 Txa7 3.Txh6 Ta1+
4.Kxc2 Ta2+ nebst Txf2-h2-h3

□ **Cornette,M**
 ■ **Schröder,J C**
 Helsingor
 [Husemann,D]

2014



Weiß am Zuge.

1.a7?

[1.Tb8! Ta5 2.Tb6 Ta2 3.Tb5+
 Kd4 4.Tb6! Kd5 (4...Ke5 5.Tb5+
 Kd6 6.Tb6+ Kd5 ; 4...Kd3 5.Td6+
 Ke2 6.Txe6+) 5.Kd2 Ke5 (5...e5?
 6.Txh6 ; 5...Ke4? 6.Txe6+ Kf3