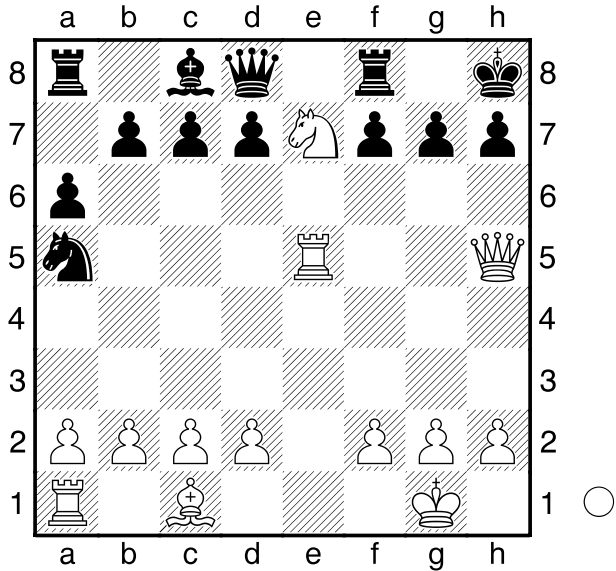


Armstrong
 NN
 Fernschach
 [Husemann,D]

1913



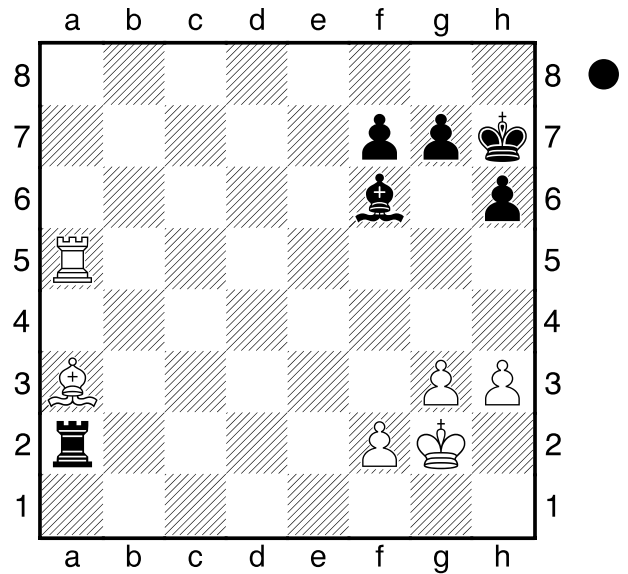
Weiß am Zuge setzt Matt in 2 Zügen.
 1.Dxh7+! Kxh7 2.Th5#
1-0

Mönster
 Djermanovic
 Prag JEM W12
 [Husemann,D]

2012

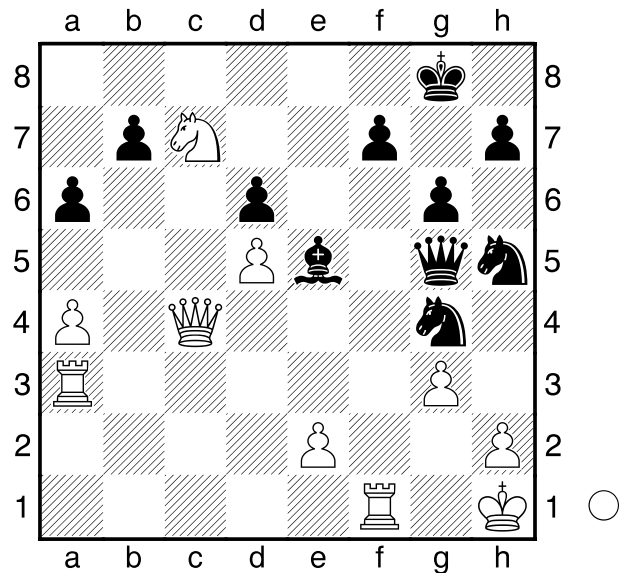
(Diagramm)

Wie kommt Schwarz am Zuge in
 Vorteil?
 1...Lc3 2.Ta7 Lb4 und Schwarz
 gewinnt die Qualle.
0-1



Minko,V
 Blechzin,I
 Wien
 [Husemann,D]

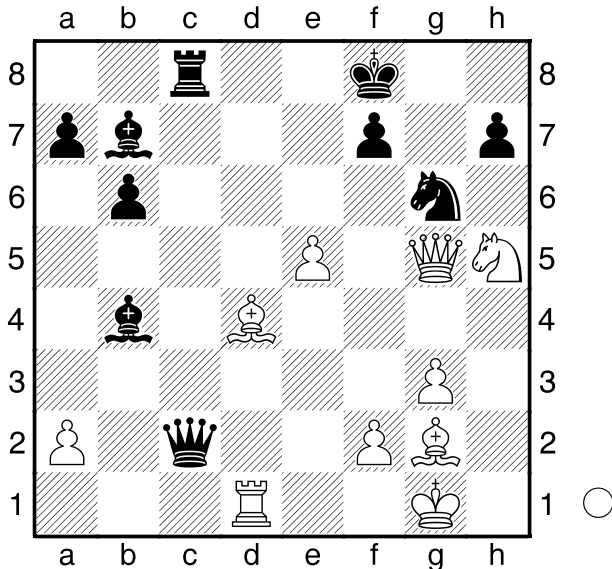
2013



Was soll Weiß am Zuge nun machen?
 1.Se6! fxe6 2.Dc8+ Kg7 3.Df8#
1-0

Kornjuschin
 Krutschew
 Jekaterinenburg
 [Husemann,D]

2013



Wie setzt Weiß am Zuge in 4 Zügen Matt?

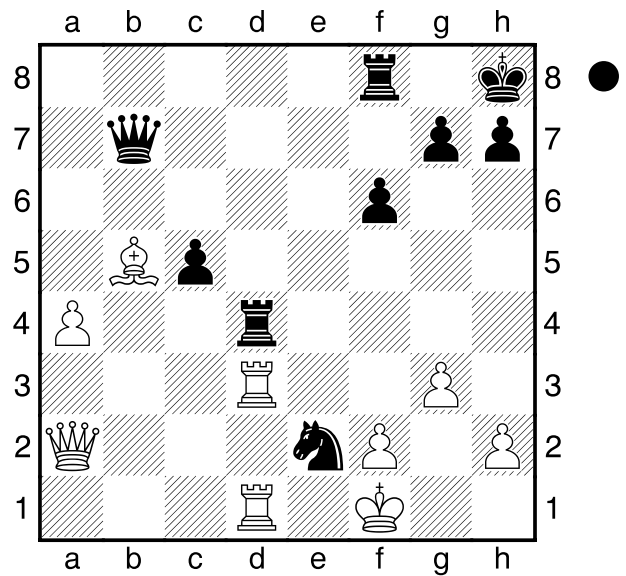
1.Lc5+! Kg8
 [1...Dxc5 2.Td8+ Txd8 3.Dxd8#]
2.Td8+ Txd8 3.Dxd8+ Sf8 4.Dxf8#
1-0

Malachow,W
 Kornejew,O
 St. Petersburg
 [Husemann,D]

2013

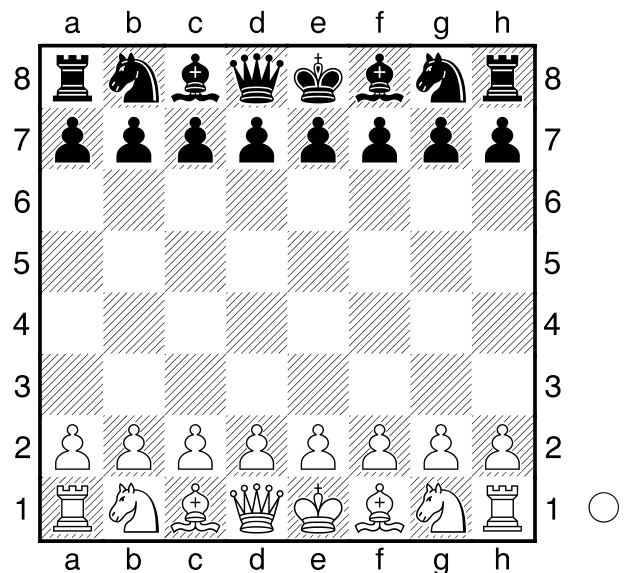
(Diagramm)

Wie gewinnt nun Schwarz am Zuge?
 1...Sc3! 2.Txc3 Dh1+ 3.Ke2 Dxd1+
 4.Ke3 De1+ 5.De2 Te8+ 6.Lxe8
 Dxc3+ 7.Dd3 Dxd3#
0-1

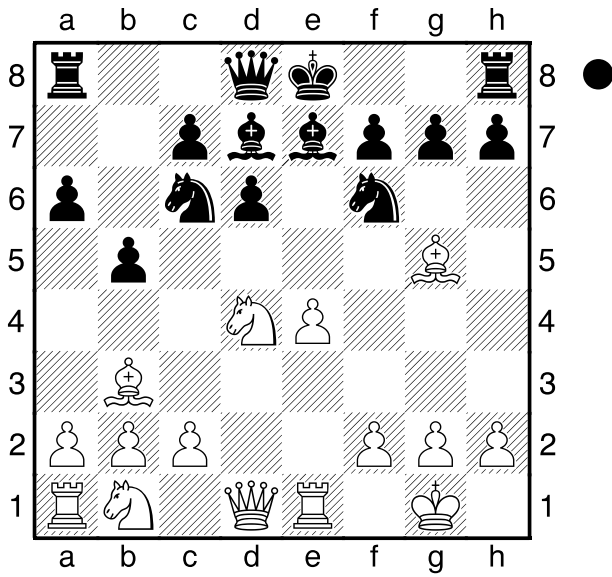


Kubacki,Matthias
 Stuchtey,Lennart
 U14 OWL EM (7)
 [Husemann,D]

C62
1194
1461
 05.01.2008



1.e4 e5 2.Sf3 Sc6 3.Lb5 d6 4.d4
exd4 5.Sxd4 Ld7 6.0-0 a6 7.La4
Sf6 8.Te1 Le7 9.Lg5 b5 10.Lb3
 Schwarz am Zuge.
Sxd4 11.Dxd4 c5 12.Lxf7+ Kxf7
13.Dc3 Te8 14.Sd2 Kg8 15.Tad1
Sg4 16.Lxe7 Dxe7 17.Df3 Tf8



18.Dg3 De5 19.Dxe5 Sxe5 20.Te2
 Lg4 21.f3 Le6 22.b3 Tae8 23.h3 d5
 24.exd5 Lxd5 25.Se4 Lxe4 26.Txe4
 Sc6 27.Txe8 Txe8 28.Td6 Sb4
 29.c3 Sxa2 30.Txa6 Sxc3 31.Tc6
 Te5 32.Kf2 h6 33.f4 Te2+ 34.Kg3
 Tb2 35.Kg4 Txc2+ 36.Kf5 Tg3
 37.Txc5 Txh3 38.Kg6 Tg3+ 39.Kf5
 Kh7 40.b4 Se2 41.Txb5 Sd4+
 0-1