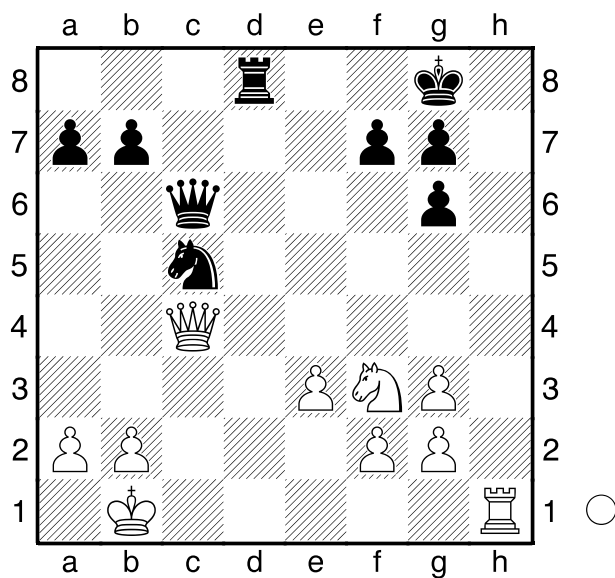


□ Muse,D
■ Fischer,M
2. Bundesliga
[Husemann,D]

2007



Was sollte Weiß am Zuge nun machen?

1.Th8+! Kxh8 2.Dh4+ Kg8 3.Dxd8+ Kh7 4.Sg5+ Kh6 5.Sxf7+ Kh5 6.Dg5#

1-0