

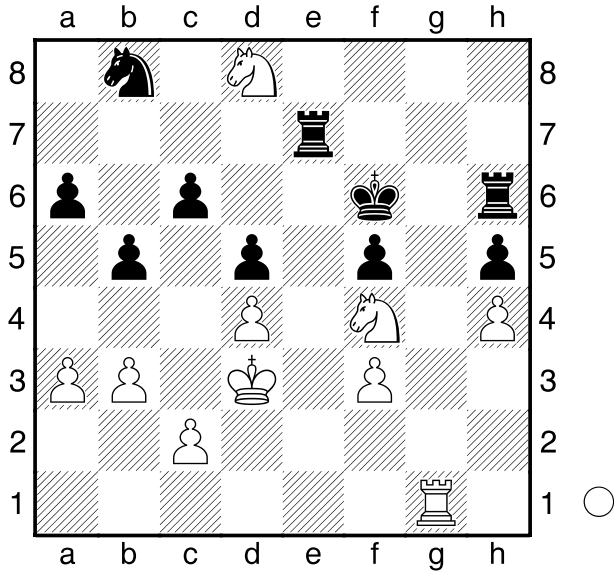
□ Fries-Nielsen, J O

■ Bitan, B

Lüneburg

[Husemann, D]

2013



Wie gewinnt Weiß am Zuge nun?

1. Tg6+! Txg6 2. Sxh5#

1-0

□ Socko, B

■ Khmelniker, I

Pardubice

[Husemann, D]

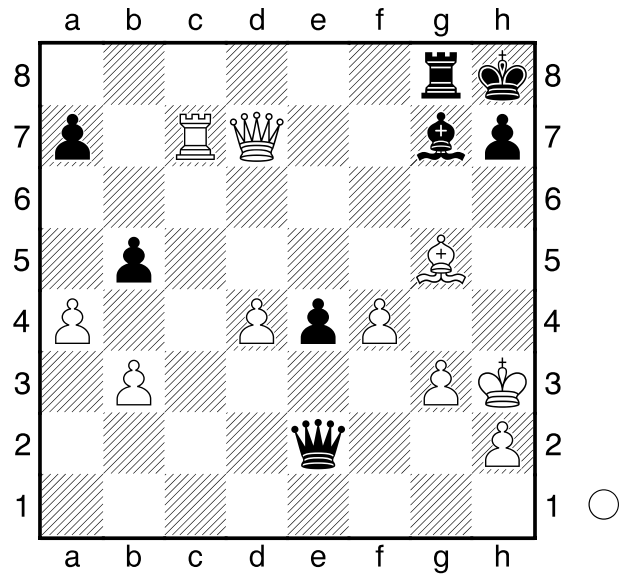
2004

(Diagramm)

Weiß am Zuge setzt nun Matt.

1. Dxc7+! Txc7 2. Tc8+ Tg8 3. Lf6#

1-0



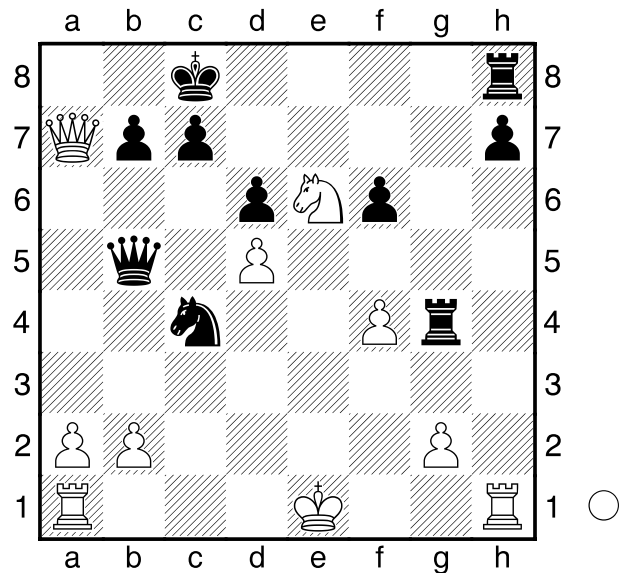
□ Grandelius

■ Einarsson

Reykjavik

[Husemann, D]

2013



Was sollte Weiß nun machen?

1. Da8+ Kd7 2. Txc7+! Txc7

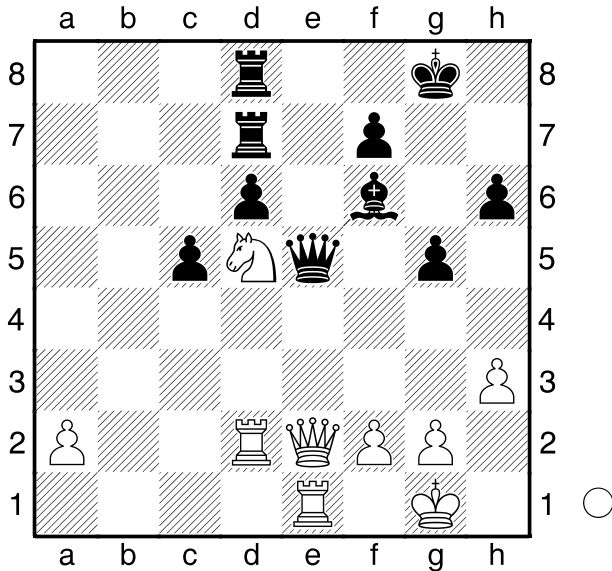
[2...Tg7 3. Txc7#]

3. Dd8#

1-0

Wolkow,S
 Sohib,O
 Dubai
 [Husemann,D]

2012



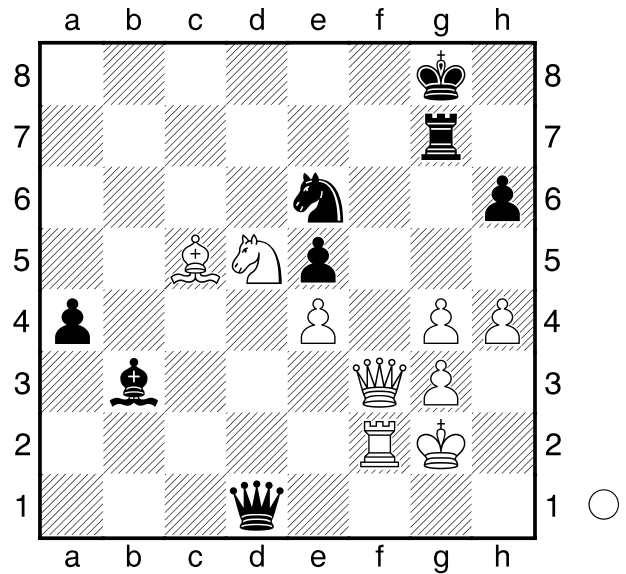
Wie geht es für Weiß am Züge weiter?
 1.Dxe5 Lxe5 2.Txe5! dxe5 3.Sf6+ Kg7 4.Txd7
1-0

Glek
 Smirnow
 Moskau
 [Husemann,D]

2013

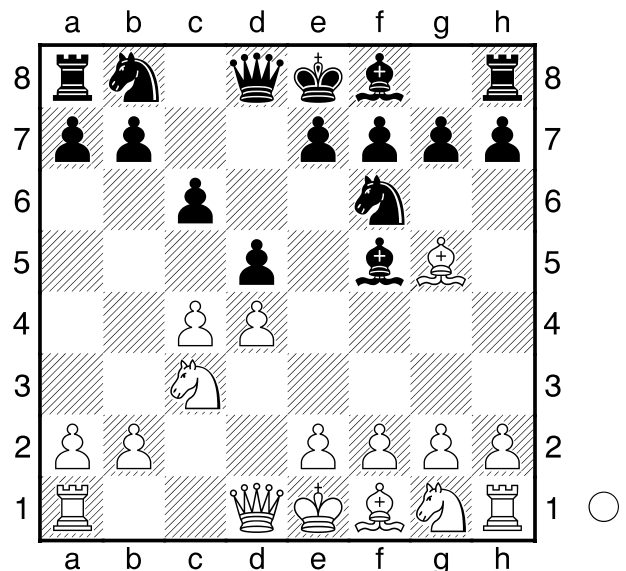
(Diagramm)

Weiß am Züge setzt in 5 Zügen Matt.
1.Df8+ Sxf8
 [1...Kh7 2.Sf6+ Kg6 3.h5+ Kg5 4.Tf5#]
2.Txf8+ Kh7 3.Sf6+ Kg6 4.h5+ Kg5
5.Le3#
1-0

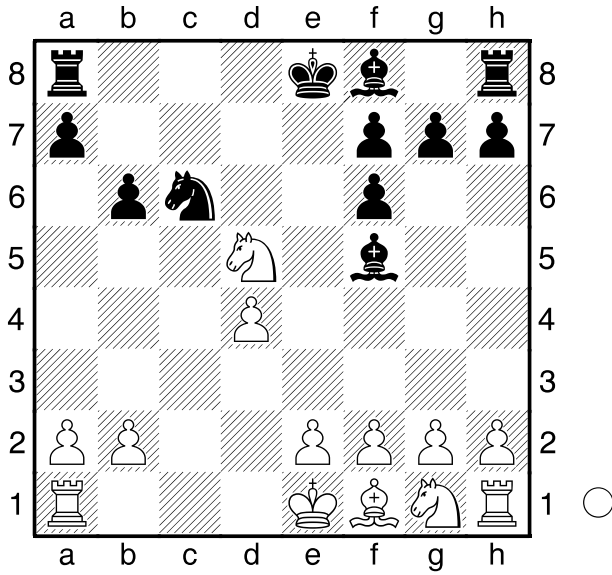


Stockhuß,Kevin **D10**
 Schrader,Elanor **1708**
1147
 U16 VL Br.-Porta Westfalica I 20. Br. 2007
 [Husemann,D]

1.d4 d5 2.c4 c6 3.Sc3 Sf6 4.Lg5 Lf5



Weiß am Züge.
5.Lxf6 exf6 6.cxd5 cxd5 7.Db3 b6
8.Dxd5 Dxd5 9.Sxd5 Sc6
 Weiß am Züge.
10.Sc7+ Kd8 11.Sxa8 Kc8 12.e3



Kb7 13.Tc1 Ld6 14.Lb5 Sb4 15.a3
Sd3+ 16.Lxd3 Lxd3 17.Sxb6 axb6
18.Kd2 Le4 19.f3 Ld5 20.Se2 f5
21.Sc3 Lb3 22.Sb5 Td8 23.Sxd6+
Txd6 24.Tc3 Le6 25.Thc1 f4
26.Tc7+ Ka6 27.b4 Td8 28.a4 g5
29.Tb1 Lf5 30.b5+ Ka5 31.Ta7#
1-0