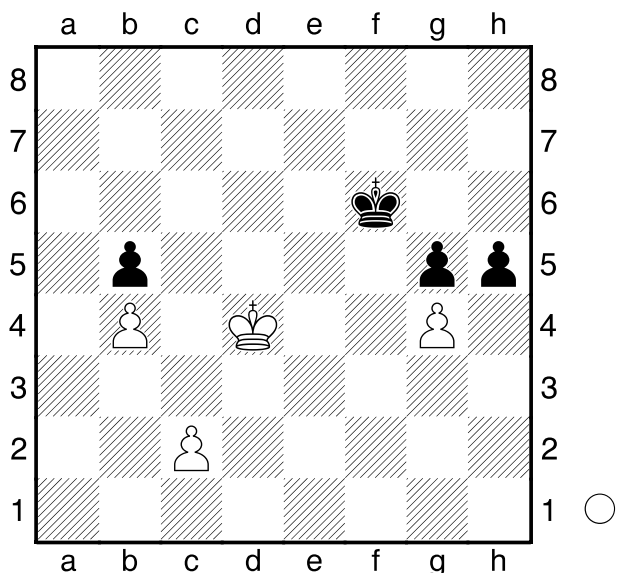


Kanmazalp,O  
 Parligras,M  
 Albena  
 [Husemann,D]

2014



Weiß am Zuge.

**1.c4?**

[ 1.gxh5 g4 2.Ke3 Kg5 3.c4 bxc4  
 4.b5 g3 5.b6 g2 6.Kf2 g1D+  
 7.Kxg1 c3 8.b7 c2 9.b8D c1D+  
 10.Kg2 Kxh5= ]

**1...h4!**

[ 1...hxg4 2.cxb5 Ke6 3.Ke3= ]

**2.cxb5**

[ 2.c5 h3-+ ]

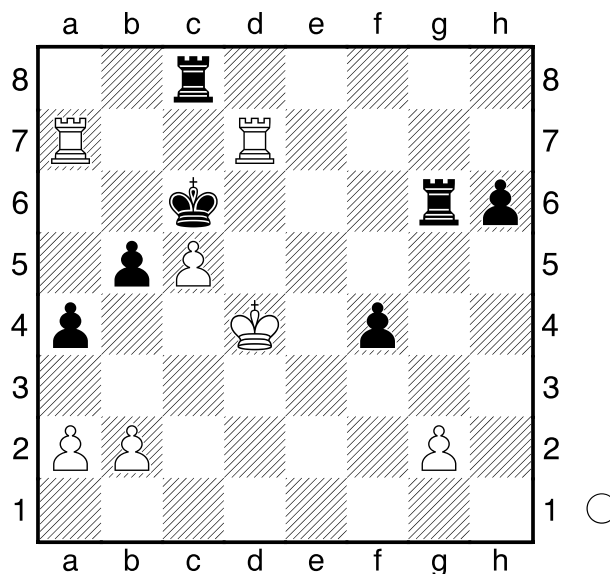
**2...Ke6 3.Ke4 Kd6**

Harmon,L  
 Erenburg,S  
 Chicago  
 [Husemann,D]

2014

(Diagramm)

Weiß spielte hier **1.b4** Was soll Schwarz nun machen, en passant schlagen oder lieber nicht?



**axb3?**

[ 1...Te6 sollte zum Remis genügen. ]

**2.a4! bxa4**

[ 2...Te6 3.axb5+ Kxb5 4.Tdb7+  
 Kc6 5.Tb6# ]

**3.Tdb7!** und Schwarz kann die Mattsetzung nicht verhindern.

Karjakin,S  
 Kamsky,G  
 Russland  
 [Husemann,D]

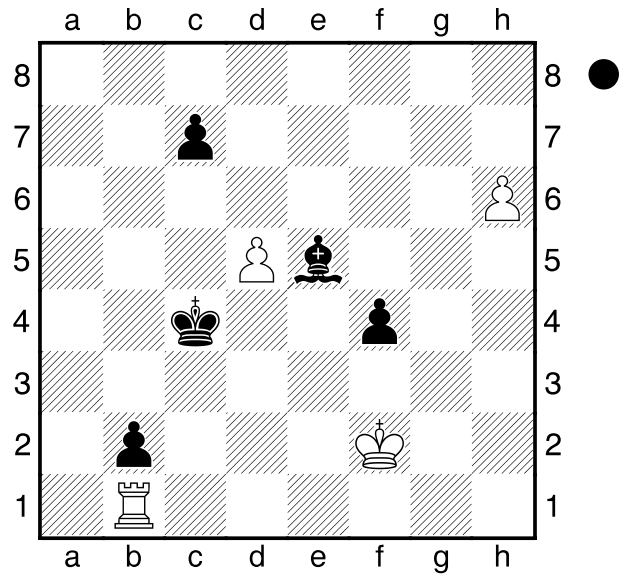
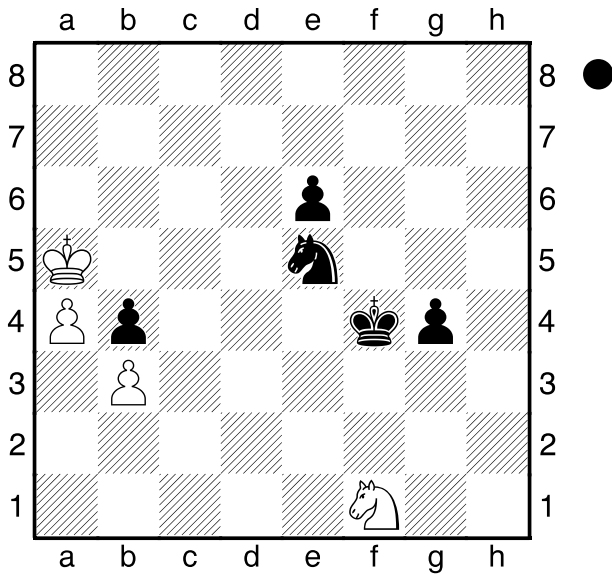
2014

(Diagramm)

Schwarz am Zuge.

**1...Sd7!**

[ 1...Sf3 war die Partiefortsetzung.  
 2.Kxb4 Sd2 3.a5! ( 3.Sxd2 g3  
 4.Sf1 g2-+ ) 3...Sxf1 4.a6 Se3 5.a7  
 Sd5+ 6.Kc5 Sc7 7.Kc6 Sa8 8.Kb7  
 g3 9.Kxa8 g2 10.Kb7 g1D 11.a8D  
 Dg2+ 12.Kb8 Dxa8+ 13.Kxa8 Ke5  
 ( 13...e5 14.b4 e4 15.b5 e3 16.b6  
 e2 17.b7 e1D 18.b8D+= ) 14.b4  
 Kd5 15.Kb7! ( 15.b5? Kc5= ) 15...e5  
 ( 15...Kc4 16.Kc6 Kxb4 17.Kd6= )



16.b5 e4 17.b6 e3 18.Ka8 e2  
 19.b7 e1D 20.b8D= ]  
 [ 1...g3 2.Sxg3 Kxg3 3.Kb5 Sd7  
 4.Kc6 e5 ( 4...Sb8+ 5.Kb7 Sd7  
 6.Kc6= ) 5.Kxd7 e4 6.a5 e3 7.a6  
 e2 8.a7 e1D 9.a8D Dd1+ 10.Kc7  
 Dxb3+ ]

**2.Kxb4**

[ 2.Kb5 e5 3.Kc6 ( 3.a5 Sb8 )  
 3...Sb8+ 4.Kb7 e4 5.Kxb8 e3  
 6.Sxe3 Kxe3 7.a5 g3 8.a6 g2 9.a7  
 g1D 10.a8D Dg8+ 11.Kb7 Dxa8+  
 12.Kxa8 Kd3-+ ]

**2...g3 3.Sxg3 Kxg3 4.a5 e5 5.a6**  
 [ 5.Kb5 Sb8 6.Kb6 e4 7.Kb7 e3-+ ]

**5...Sb8 6.Kb5**

[ 6.a7 Sc6+ 7.Kc5 Sxa7-+ ]

**6...Sxa6 7.Kxa6 e4-+**

**5.Ke4 Lb2 6.h7 Kc2 7.Kxf4 Kd3**  
**8.Kf5 Kc4 9.Ke6 Kc5 10.Kd7 Le5**  
**11.h8D Lxh8 12.Kxc7 Kxd5**

□ Lenderman,A

■ Gareev,T

Saint Louis

2014

[Husemann,D]

Schwarz am Zuge.

**1...Kc3**

[ 1...Kxd5! ]

**2.Kf3 Kc2 3.Th1 b1D 4.Txb1 Kxb1**