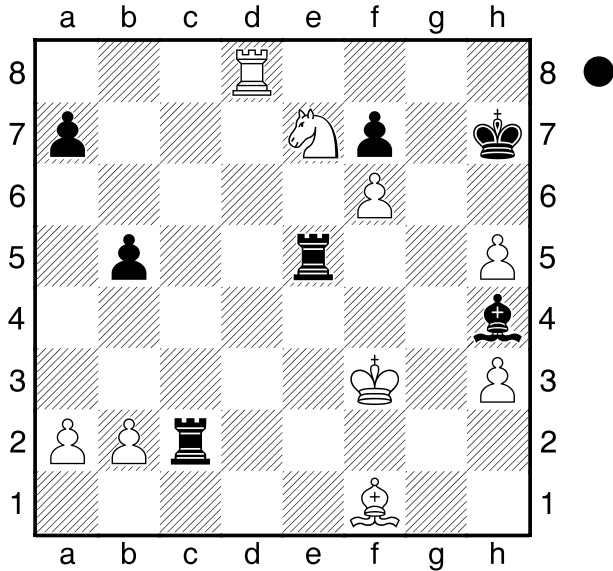


Welz,P
 Gorin,A
 Prag
 [Husemann,D]

2009



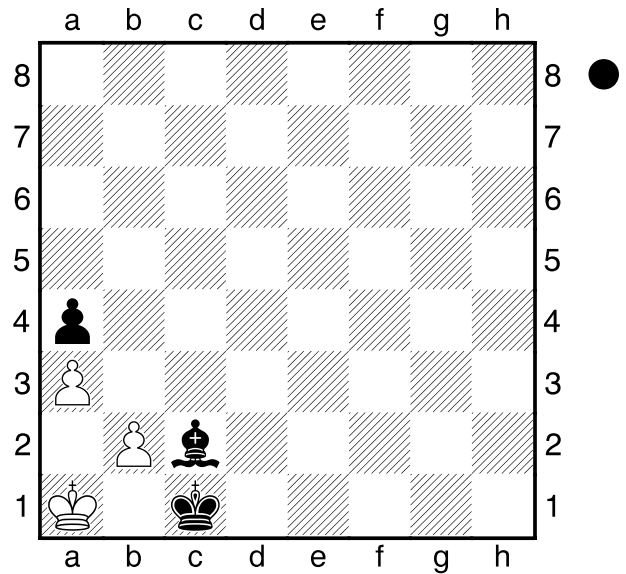
Wie soll Schwarz am Zuge fortfahren?
 1...Tf2+ 2.Kg4 Te4#
0-1

Henry
 Samsonkin
 Edmonton
 [Husemann,D]

2009

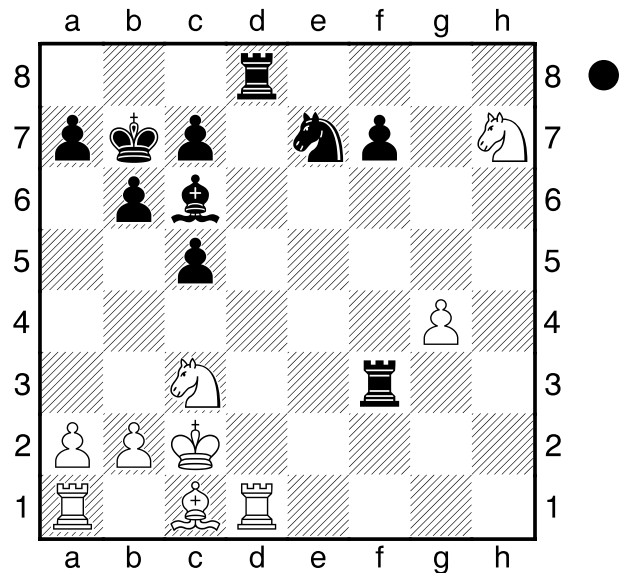
(Diagramm)

Wie behandelt Schwarz am Zuge diese
 Stellung richtig?
1...Lb1!
 [1...Lb3? Patt]
2.b4 axb3 3.a4 b2#
0-1



Caruana,F
 Adams,M
 Dortmund
 [Husemann,D]

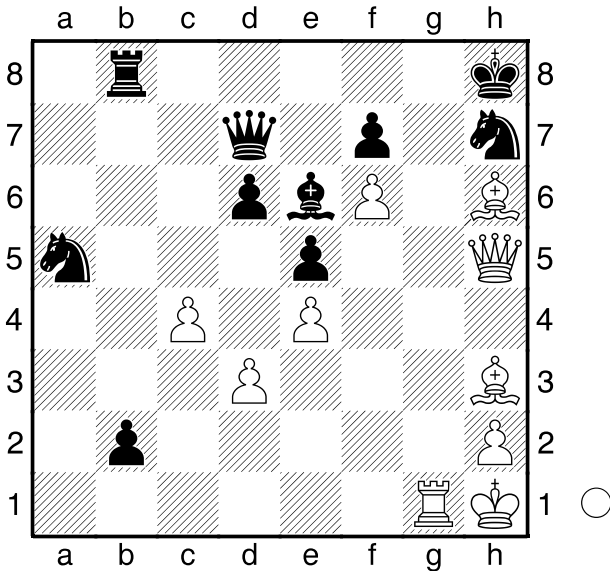
2013



Was sollte Schwarz am Zuge nun
 machen?
1...Txc3+! 2.bxc3
 [2.Kxc3 Txd1-+]
2...La4+ 3.Kb2 Txd1
0-1

Dubow,D
 Fedortschuk,S
 Worldcup
 [Husemann,D]

2013



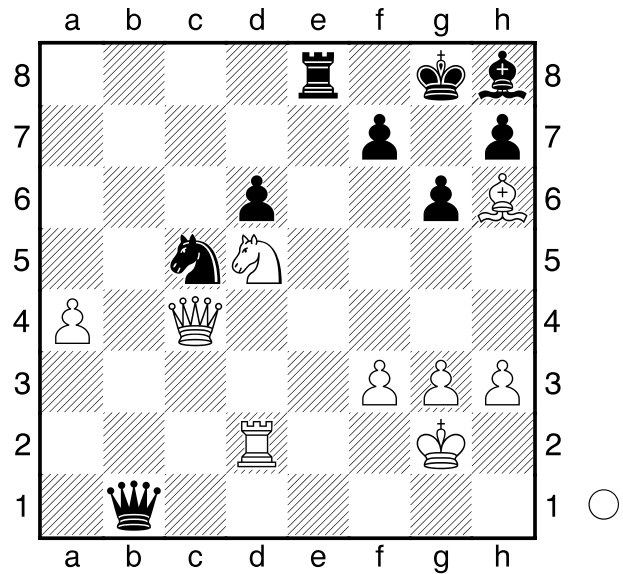
Weiß am Zuge setzt Matt!

- 1.Lg7+! Kg8 2.Lf8+**
 [2.Lh8+ Lg4 (2...Sg5 3.Dh6
 nebst Dg7# ; 2...Kxh8 3.Dh6 Tg8
 4.Txg8+ Kxg8 5.Dg7# ; 2...Kf8
 3.Dh6+ Ke8 4.Tg8+ Sf8 5.Txf8#)
 3.Dh6 nebst Dg7#]
2...Kxf8
 [2...Sg5 3.Txg5+ Kxf8 4.Dh8#]
 [2...Lg4 3.Dh6 nebst Dg7#]
 [2...Kh8 3.Dh6 nebst Dg7#]
3.Dxh7 nebst Matt durch Tg8#, Dg8#
 oder Dh8#
1-0

Alexandrow,A
 Meenakshi,S
 Dubai
 [Husemann,D]

2010

Was kann Weiß am Zuge nun machen?



- 1.Dxc5! Lg7**
 [1...dxc5 2.Se7+ Txe7 3.Td8+ Te8
 4.Txe8#]
2.Se7+ Kh8 3.Lxg7+ Kxg7 4.Dxd6
1-0

C47

Reimann,Aurimas
 Schrader,Alia
 U14 VK Br. II-Porta II (3. Br.) 27.10.2007
 [Husemann,D]

- 1.e4 e5 2.d4 Sc6 3.Sf3 Sf6 4.Sc3**
d5 5.dxe5 Sg4 6.Sxd5 Lc5 7.Lg5
Dd7 8.Sd4 Lxd4 9.Df3 Sgxe5
10.Df4 f6 11.Lxf6 gxf6

(Diagramm)

Weiß am Zuge.

- 12.Sxf6+ Kd8 13.Sxd7 Lxd7**
14.Df6+ Ke8 15.Dxh8+ Ke7 16.Dxa8
Lxb2 17.Td1 Lg4 18.Le2 Lxe2
19.Kxe2 Sd4+ 20.Ke3 Sg4+ 21.Kf4
Sxf2 22.Dxb7 Sxh1 23.Dxb2 Se6+
24.Ke5 Sf2 25.Td2 Sg4+ 26.Kd5
Sf6+ 27.Kc6 Sxe4 28.Td7+ Ke8
29.Db8+ Sd8+ 30.Dxd8#
1-0

