

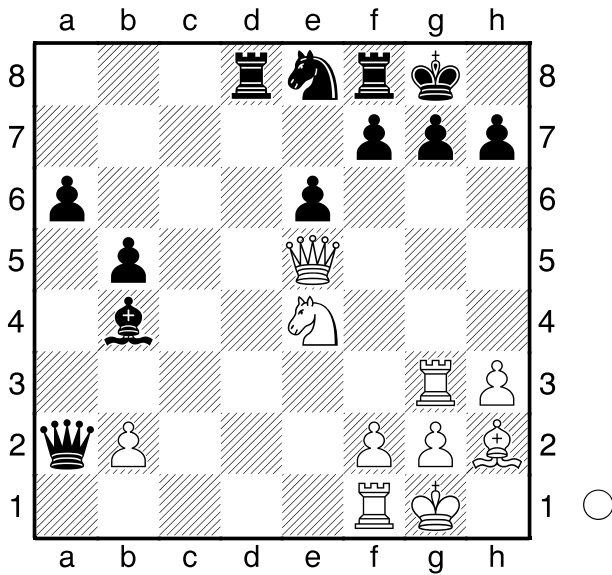
□ Gutacker

■ Voss

Frankfurt

2008

[Husemann,d]



Wie gewinnt Weiß am Zuge nun?

**1.Sf6+ Sxf6**

[ 1...Kh8 2.Sxe8 Dxb2 3.Dxb2 f6  
4.Sxg7+- ]

**2.Txg7+! Kxg7**

[ 2...Kh8 3.Tg8+ Txg8 4.Dxf6+ Tg7  
5.Dxd8+ nebst Matt ]

**3.Dg5+ Kh8 4.Dxf6+ Kg8 5.Le5**

**1-0**