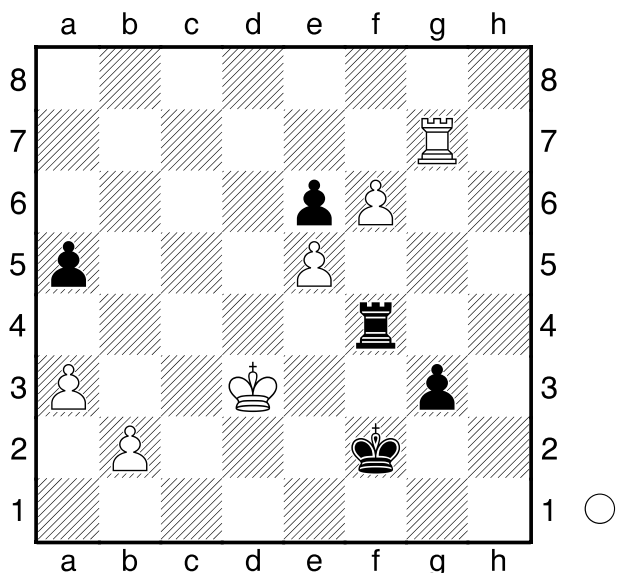


Kristiansen,J
 Hulak,K
 Senioren WM
 [Husemann,D]

2013



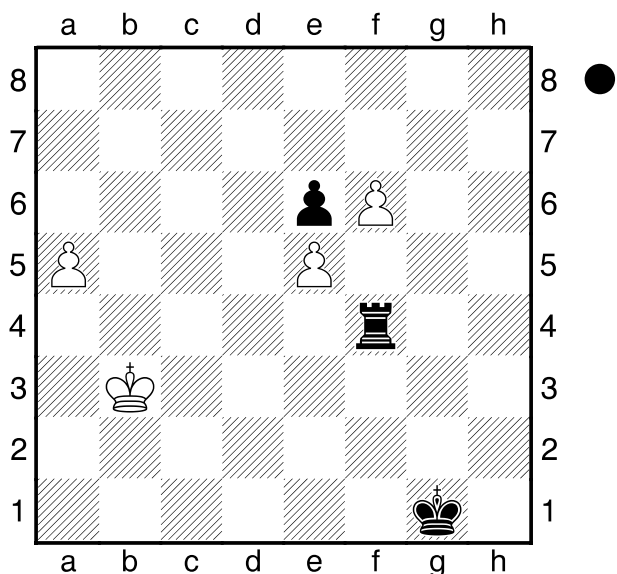
Weiß am Zuge.

1.b4

[1.Kc3 war die Partiefortsetzung. a4!

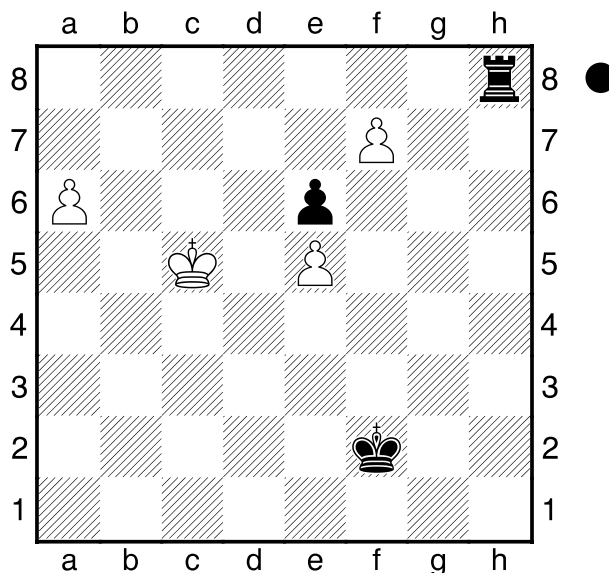
2.b4 axb3 3.Kxb3

A) 3...g2! 4.a4 g1D 5.Txg1 Kxg1
6.a5



Td4! (6...Th4? 7.a6 Th8 8.Kc4
Kf2 9.Kc5 Td8 10.Kc6 Ke3
11.Kc7 Ta8 12.Kb7 Tf8 13.a7
Tf7+ 14.Kb6 Tf8 15.Kb7=) 7.a6

(7.Kc3 Ta4 8.f7 Tf4) 7...Kf2
(7...Td7? 8.Kb4=) 8.a7 Td8
9.Kc4 Ke3 (9...Ta8 10.f7) 10.Kc5
Ke4 11.Kc6 Kxe5-+ ;
B) 3...Tf5? 4.a4 g2 5.a5 g1D
6.Txg1 Kxg1 7.a6 Th5 8.Kc4 Kf2
9.f7 Th8 10.Kc5



B1) 10...Td8!

B1a) 11.a7 Kf3 12.Kc6 Kf4
13.Kc7 Tf8 14.Kd6 Ta8!
15.Kxe6 Kg5 16.Kd6 Kg6
17.Kc6 (17.e6? Kg7)
17...Kxf7 18.Kb7= ;

B1b) 11.Kc6 Kf3 12.Kc7 Tf8
13.Kd6 Txf7 14.Kxe6 Ta7= ;

B2) 10...Tf8? 11.a7 1-0]

1...axb4 2.axb4 Txb4

[2...g2 3.b5 Tf3+ (3...g1D 4.Txg1
Kxg1 5.b6 Tb4 6.f7+-) 4.Kc4 Tg3
5.f7!]

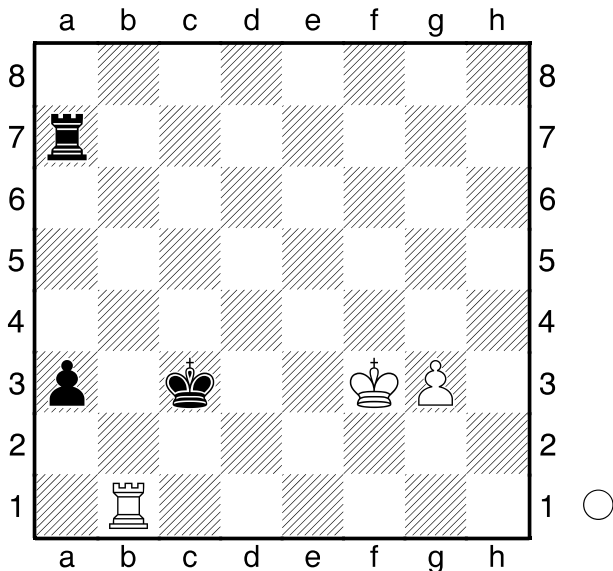
3.Tg6 Tf4

[3...g2? 4.f7 Tf4 5.Tf6 Txf6 6.exf6
g1D 7.f8D]

**4.f7 Txf7 5.Tf6+ Txf6 6.exf6 g2 7.f7
g1D 8.f8D+ Ke1 9.Db4+=**

□ Greet,A
 ■ Tan,J
 4NCL
 [Husemann,D]

2014



Weiß am Zuge.

1.g4

[1.Kf4? a2 2.Ta1 Kb2 3.Txa2+
 (3.Th1 a1D 4.Txa1 Txa1 5.g4 Kc3
 6.Ke4 Tg1 7.Kf5 Kd4 8.g5 Kd5-+)
 3...Txa2 4.Kf5 Kc3 5.g4 Kd4 6.g5
 Kd5 7.Kf6 Kd6 8.g6 Tf2+ 9.Kg7
 Ke7 10.Kh7 Th2+ 11.Kg7 Tg2
 12.Kh7 Kf6-+]

[1.Ke4! a2 2.Ta1 Kb2 3.Th1 a1D
 4.Txa1 Txa1 5.g4 Kc3 6.g5 Tg1
 7.Kf5 Kd4 8.g6 Kd5 9.Kf6 Kd6
 10.Kf7 (10.g7) 10...Tf1+ 11.Ke8!
 (11.Kg8? Ke7+-) 11...Ke6
 (11...Tg1 12.Kf7=) 12.g7 Tg1
 13.Kf8=]

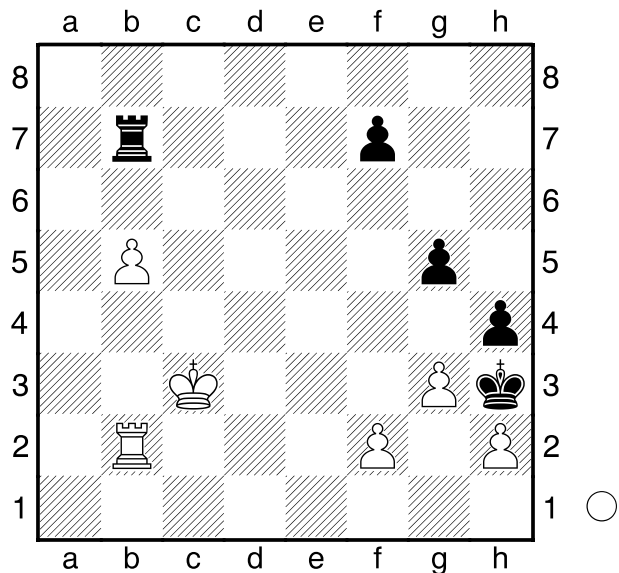
1...a2 2.Ta1 Kb2?

[2...Ta4! 3.Kg3 (3.g5 Kb2 4.Tg1
 a1D 5.Txa1 Kxa1! 6.g6 Ta6 7.g7
 Tg6) 3...Kb2 4.Txa2+ (4.Th1 a1D
 5.Txa1 Txa1 6.Kf4 Kc3 7.Ke4 Tg1
 8.Kf5 Kd4 9.g5 Kd5 10.Kf6 Kd6
 11.g6 Tf1+-) 4...Kxa2 5.g5 (5.Kh4
 Kb3 6.Kh5 Kc4 7.g5 Kd5 8.g6

Ke6) 5...Tc4]
3.Txa2+ Txa2 4.Ke4! Kc3 5.Kf5?
 [5.g5=]
5...Kd4 6.g5 Kd5 7.Kf6 Kd6 8.g6
Tf2+ 9.Kg7 Ke7

□ Aronjan,L
 ■ Karjakin,S
 Wijk an Zee
 [Husemann,D]

2014



Weiß am Zuge.

1.gxh4 gxh4 2.f4

[2.f3!]

2...Kg4 3.b6 f5 4.Kd4 Kxf4 5.Tb3!
h3 6.Kd5 Kg4 7.Kc6 Tb8 8.Tg3+
Kh4 9.b7 f4 10.Tg7

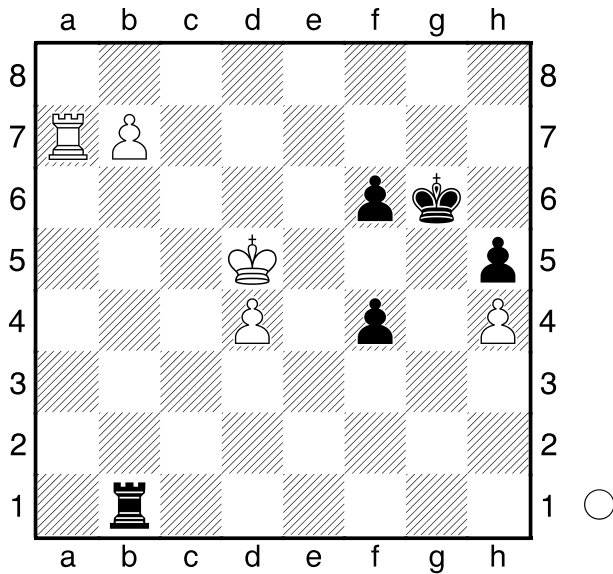
□ Potkin,W
 ■ Melia,S
 Jerewan EM
 [Husemann,D]

2014

Weiß am Zuge.

1.Ke4?

[1.Kc6! f3 (1...Tc1+ 2.Kd7 Tb1



3.Kc7 Tc1+ 4.Kb8 f3 5.Ta2)

A) 2.Ta3 f2 3.Tf3 Tc1+! (3...f1D?

4.Txf1 Txf1 5.b8D) 4.Kd6 Tb1

5.Kc7 Tc1+ 6.Kd8 Tb1= ;

B) 2.Ta2 Kf5 3.d5 Tc1+ 4.Kb6

Tb1+ 5.Ka7 Ke5 6.b8D+ Txb8

7.Kxb8 Kxd5 8.Kc7 Ke4 9.Kd7

Ke3 10.Ke6 f2 11.Ta1 Ke2

12.Kxf6+- ;

C) 2.Ta1! Tb3 (2...Txa1 3.b8D f2

4.Dg3+) 3.Kc7 Tc3+ 4.Kb6 Tb3+

5.Ka7]

1...Tb4! 2.Ta1

[2.Kxf4 Txd4+ 3.Ke3 Tb4=]

[2.Kf3 Kf5 3.Ta5+ Kg6 4.d5

(4.Ta7 Kf5=) 4...Txb7 5.d6 Tb3+

6.Kxf4 Td3 7.Ta6 Td1=]

2...Txb7 3.Kxf4 Tb2 4.Td1 Kf7 5.d5

Ke7 6.Kf5 Tb4 7.Te1+ Kd6 8.Te4

Txe4 9.Kxe4 f5+ 10.Kxf5 Kxd5