

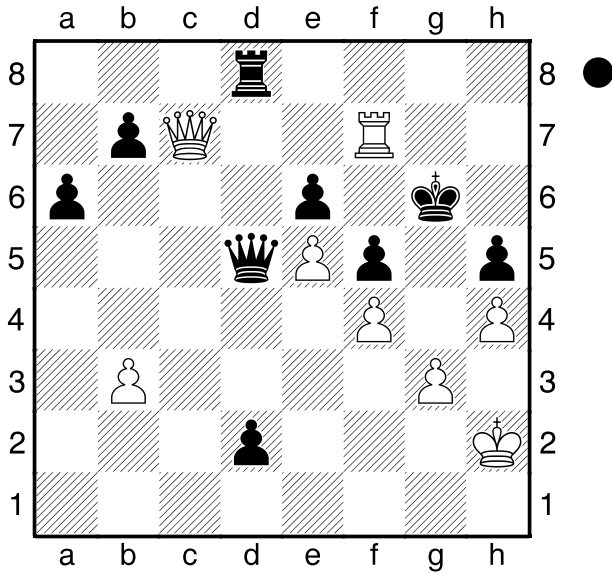
☐ Amil Meilan

■ Fiori

Buenos Aires

2002

[Husemann,D]



Was kann Schwarz am Zuge gegen die weiße Drohung Tf6# machen?

1...Dh1+! 2.Kxh1 d1D+ 3.Kg2

[3.Kh2 Td2+ 4.Kh3 Dh1#]

3...Td2+ 4.Kh3 Dh1#

[4...Dg4#]

[4...Df1#]

0-1