

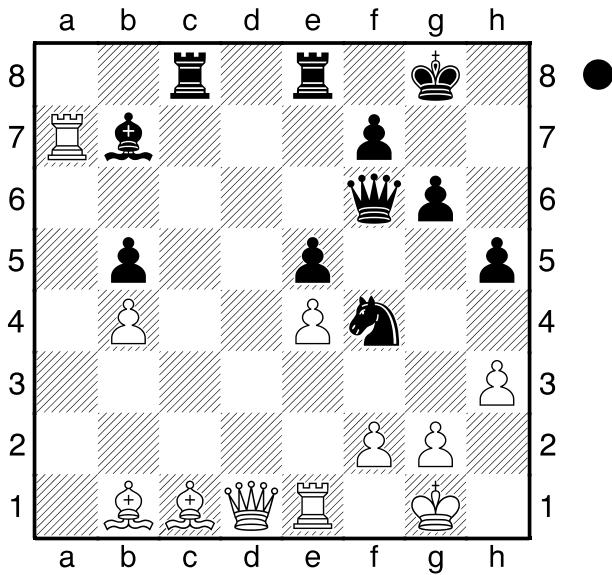
□ Hapala

■ Papp

Frauen EM

2016

[Husemann,D]



Wie geht es für Schwarz am Zuge weiter?

1...Txc1! 2.Dxc1 Dg5 3.Dxf4

[3.g3 Se2+ 4.Txe2 Dxc1+ 5.Kg2
Dxb1 6.Txb7 Dxb4+-]

3...exf4 4.Txb7

0-1