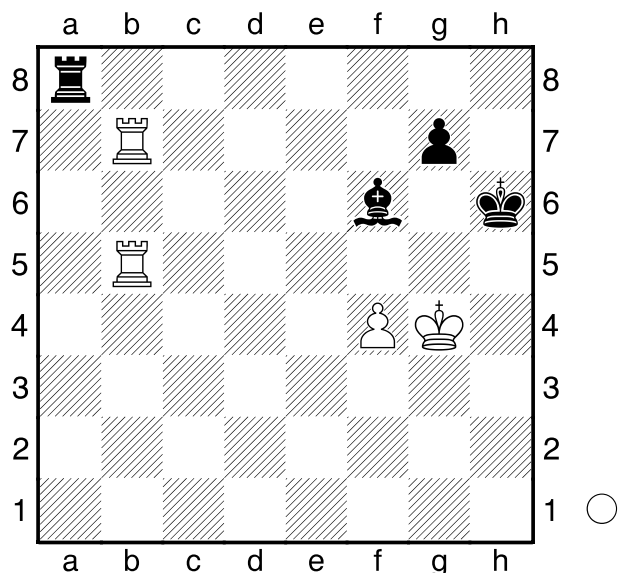


Delorme,A
 Pucher,S
 Nancy
 [Husemann,D]

2008



Wie geht es nun für Weiß am Zuge weiter?

1.Th5+ Kg6 2.f5#
1-0

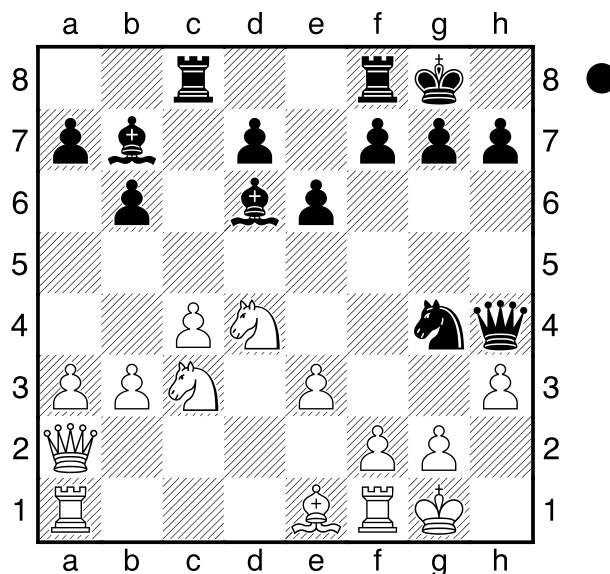
Reid,V
 de Haan,E
 Gibraltar
 [Husemann,D]

2013

(Diagramm)

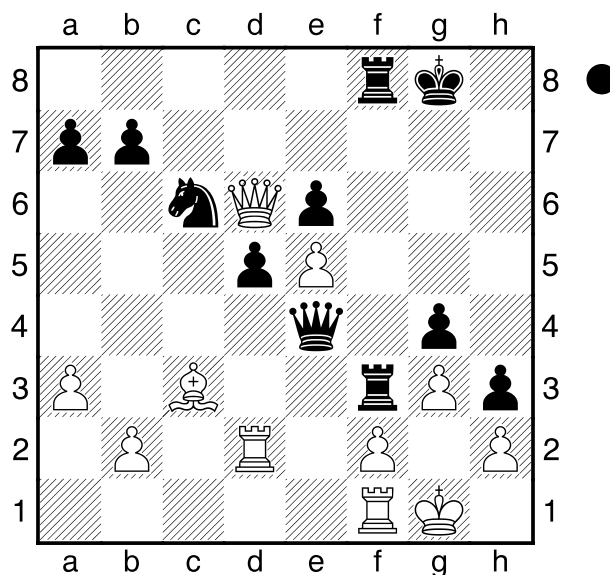
Wie gewinnt Schwarz am Zuge nun?

1...Dxh3! 2.Sf3
 [2.gxh3 Lh2#]
 2...Lh2+ 3.Kh1
 [3.Sxh2 Dxh2#]
 3...Lxf3
 0-1



Bojkovic,N
 Sajzewa,L
 Cetinje
 [Husemann,D]

1992

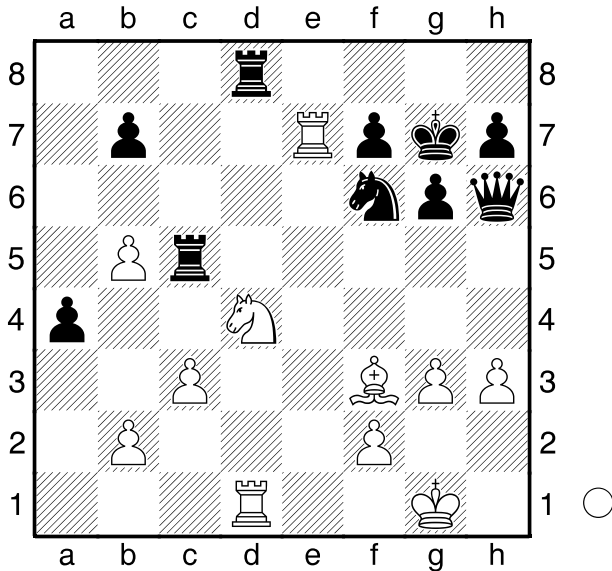


Wie geht es für Schwarz am Zuge nun weiter?

1...Txg3+! 2.fxg3
 [2.hxg3 Dg2#]
 2...Dh1+! 3.Kxh1 Txf1#
 0-1

Wehner
 Alexandrowski
 Deutschland
 [Husemann,D]

2005



Was kann Weiß am Zuge nun machen?

- 1.Se6+! Kh8**
 [1...Kg8 2.Txd8+ Se8 3.Tdxe8+ Df8 4.Txf8#]
2.Txd8+ Se8 3.Tdxe8+ Df8 4.Txf8#
1-0

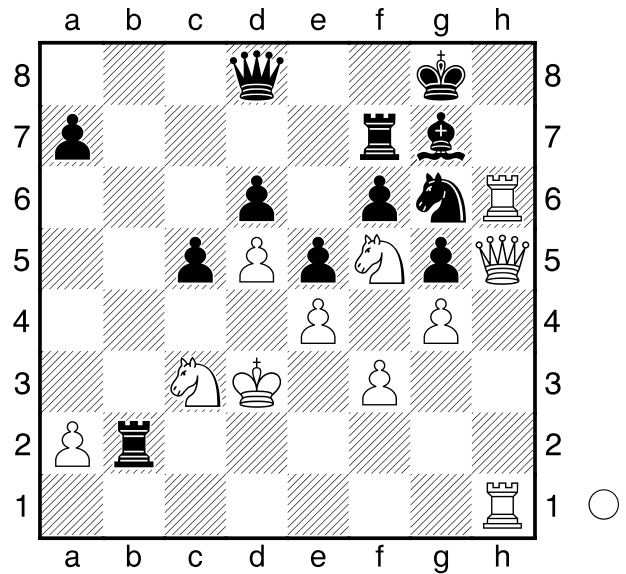
Vanek,T
 Studnicka,T
 Prag
 [Husemann,D]

2013

(Diagramm)

Was kann Weiß am Zuge nun machen?

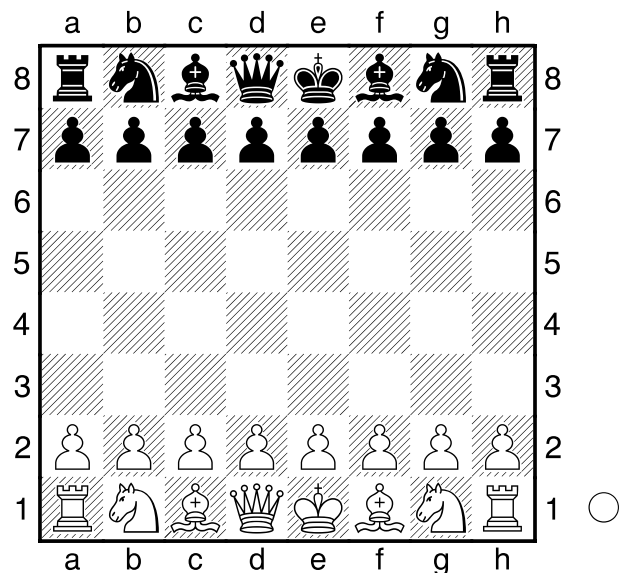
- 1.Th8+! Lxh8 2.Dxg6+ Lg7**
 [2...Tg7 3.Txh8+ Kxh8 4.Dxg7#]
3.Sh6+ Kh8 4.Sxf7+ Kg8 5.Th8#
1-0



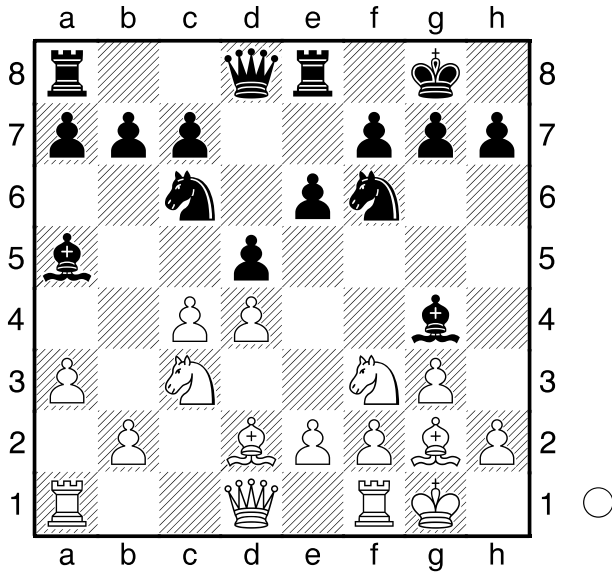
D02

Heitjohann,Raphael
 Riedel,David
 BJEM U12 (2)
 [Husemann,D]

15.09.2007



- 1.d4 d5 2.c4 Sf6 3.Sf3 Sc6 4.g3 Lg4 5.Lg2 e6 6.Sc3 Lb4 7.Ld2 0-0 8.0-0 Te8 9.a3 La5**
 Weiß am Zuge.
10.b4 Lb6 11.c5 Lxc5 12.bxc5 e5 13.e3 Se4 14.Dc2 Dd7 15.Sxe4 dxe4 16.Dxe4 Lh3 17.Lxh3 Dxh3



**18.Sg5 Dd7 19.Dxh7+ Kf8 20.Dh8+
 Ke7 21.Dxg7 Kd8 22.Df6+ Kc8
 23.Sxf7 Te6 24.Dh8+ Te8 25.Df6
 exd4 26.exd4 Sxd4 27.Lc3 Se2+
 28.Kg2 Dd5+ 29.Df3 Sf4+ 30.gxf4
 Tg8+ 31.Sg5 Kd7 32.Dxd5+ Ke7
 33.De6+ Kd8 34.Lf6#
 1-0**