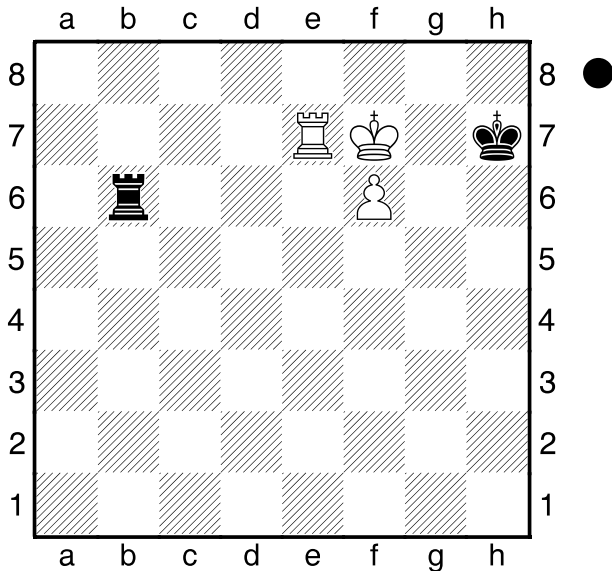


Tragikomödie 3

[Husemann,D]



Capablanca-Menchik, Hastings 1929
Schwarz am Zuge.

1...Ta6?

[1...Tb8=]

[1...Tb1=]

2.Td7

[2.Kf8+-]

2...Ta8 3.Te7 Ta6?

[3...Ta1=]

4.Kf8+! Kg6 5.f7 Ta8+

[5...Kf6 6.Kg8+-]

6.Te8 Ta7 7.Te6+ Kh7 8.Ke8?

[8.Te1+-]

[8.Tf6+-]

8...Ta8+ 9.Ke7 Ta7+?

[9...Kg7=]

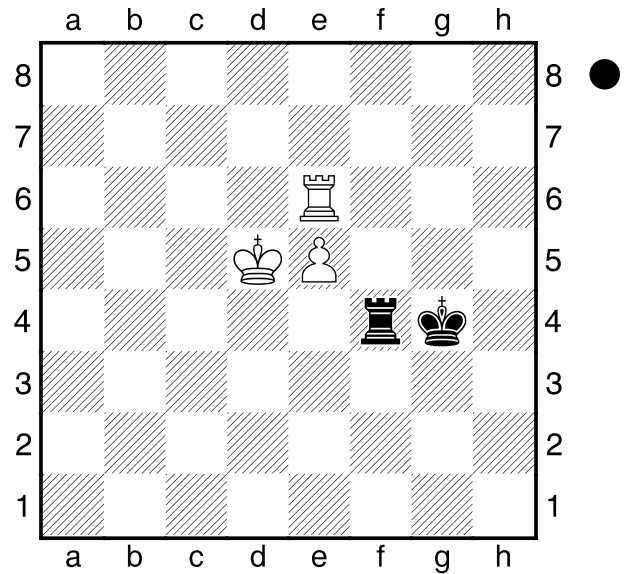
10.Kf6

Tragikomödie 4

[Husemann,D]

Alburt-Dlugy, Los Angeles 1991.
Schwarz am Zuge.

1...Kg5?



[1...Ta4=]

2.Ta6! Tb4 3.Ke6

[3.Kd6 Kf5!= (3...Kg6? 4.Kc5+)]

3...Kg6?

[3...Tb7=]

[3...Tb8=]

[3...Tb1=]

4.Ke7+ Kg7 5.Ta7

[5.e6? Tb7+ 6.Kd8 Tb8+ 7.Kc7
Tb1=]

5...Tb8

[5...Tb6!? 6.e6 Tb8 7.Kd6+! Kf6
8.Kd7! Kg7 9.Ke7!]

6.e6 Kg6 7.Ta1 Tb7+ 8.Kd6 Tb6+

9.Kd7 Tb7+ 10.Kc6 Tb8 11.Kc7 Th8

[11...Tb2 12.Te1!]

12.e7