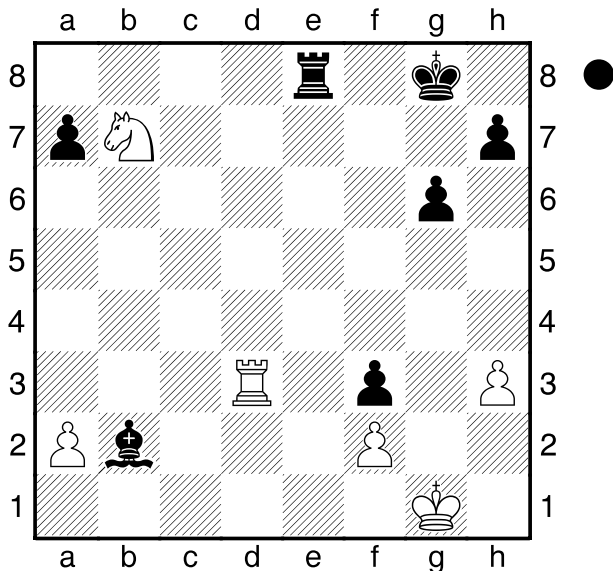


Ginsburg,M
 Ivanov,A
 Ledyard
 [Husemann,D]

2008



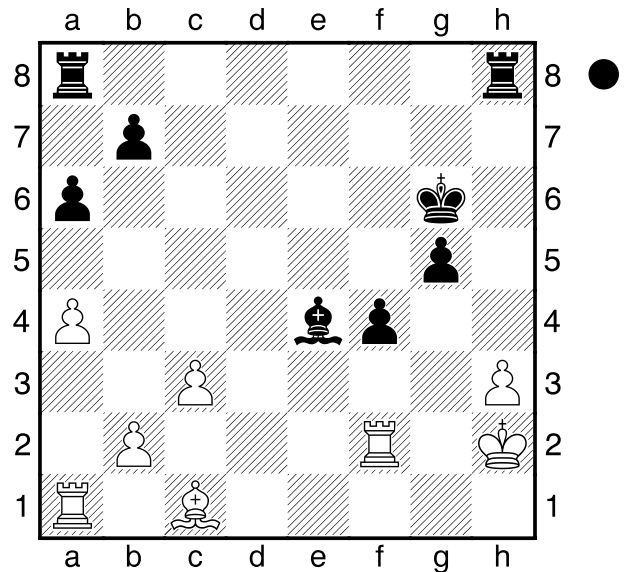
Was sollte Schwarz am Zuge nun unternehmen?
 1...Te1+ 2.Kh2 Le5#
0-1

Djukic
 Pandurevic
 Bizovac
 [Husemann,D]

2003

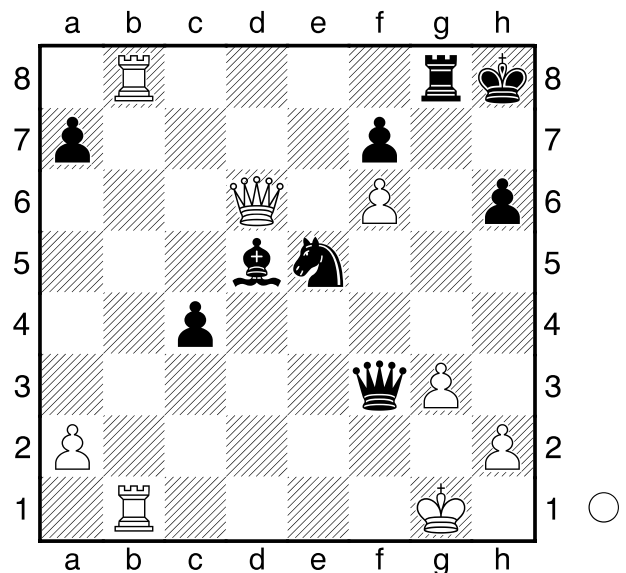
(Diagramm)

Wie sollte Schwarz am Zuge fortfahren?
 1...Txh3+! 2.Kxh3
 [2.Kg1 Th1#]
 2...Th8+ 3.Kg4 Th4#
0-1



Ledger
 Tschernjajew
 Hastings
 [Husemann,D]

2000

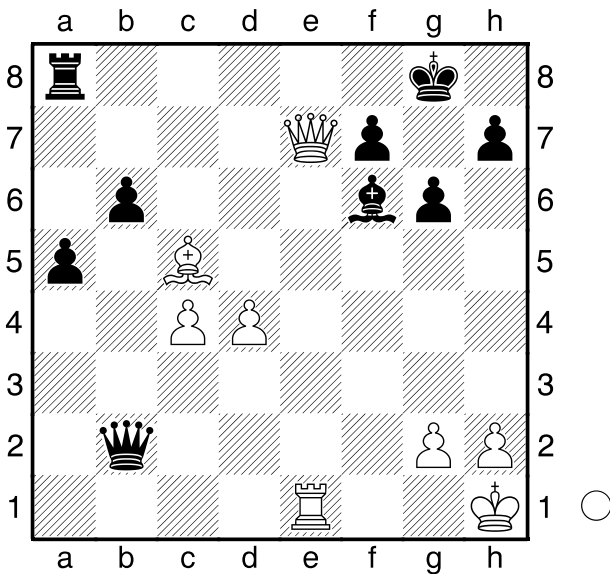


Was kann Weiß am Zuge gegen das drohende Matt machen?
1.Txg8+! Kxg8
 [1...Kh7 2.Tg7+ Kh8 3.Df8#]
2.Df8+! Kxf8
 [2...Kh7 3.Dg7#]

3.Tb8#
1-0

□ **Orel,O**
 ■ **Kovac,M**
 Slowenien
 [Husemann,D]

2002



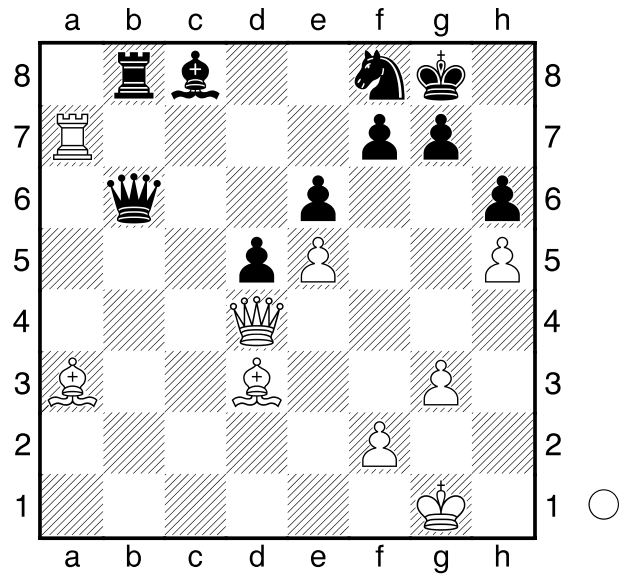
Wie gewinnt Weiß am Zuge nun?
 1.De8+! Txe8 2.Txe8+ Kg7 3.Lf8+ Kg8 4.Lh6#
1-0

□ **Naiditsch,A**
 ■ **Khenkin,I**
 Dortmund
 [Husemann,D]

2013

(Diagramm)

Wie gewinnt Weiß am Zuge nun?
1.Txf7! Kxf7
 [1...Dxd4 2.Txf8#]
 [1...Dd8 2.Txf8+ Dxf8 3.Lxf8 Kxf8 4.Dc5+-]



2.Df4+ Ke8
 [2...Kg8 3.Dxf8#]
3.Dxf8+ Kd7 4.Lb5+ Dxb5
 [4...Kc7 5.De7+ Ld7 6.Dxd7#]
5.Dd6+ Ke8 6.De7#
1-0

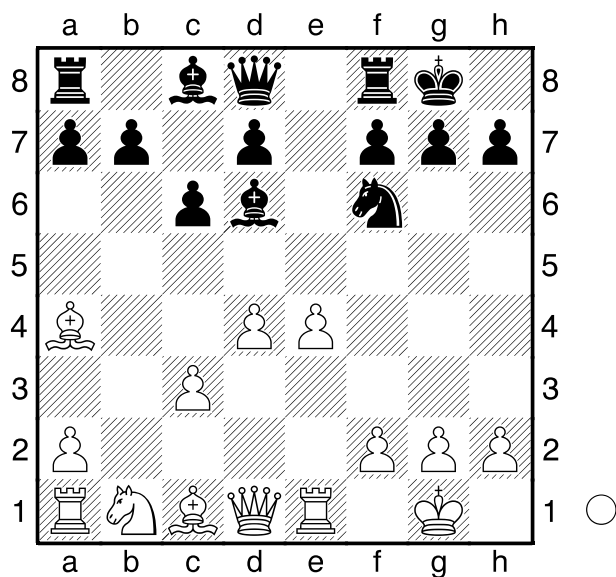
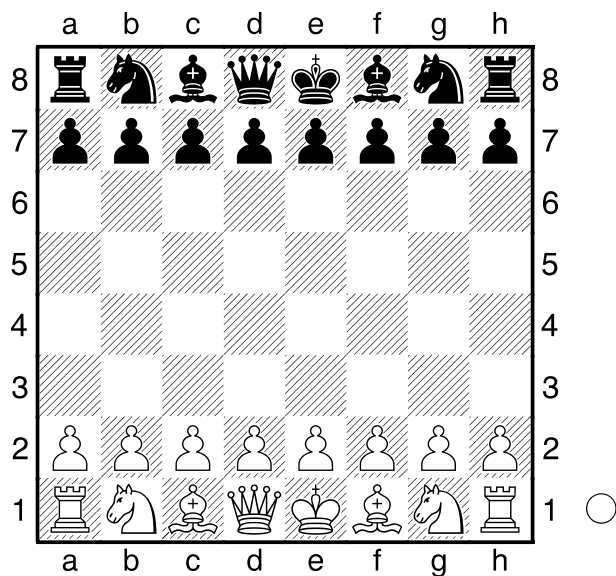
□ **Schmitt,Matthias** **C61**
 ■ **Meißner,Peter** **1068**
 BJEM U12 (3) 15.09.2007
 [Husemann,D]

(Diagramm)

1.e4 e5 2.Sf3 Sc6 3.Lb5 Sd4
4.Sxd4 exd4 5.0-0 Sf6 6.Te1 Lc5
7.c3 dxc3 8.bxc3 c6 9.La4 0-0
10.d4 Ld6

(Diagramm)

Weiß am Zuge.
11.e5 Lxe5 12.dxe5 Sd5 13.Dd3
Te8 14.g3 d6 15.La3 Txe5 16.Txe5
dxe5 17.Lc2 g6 18.c4 Lf5 19.Dd2
Lxc2 20.cxd5 Lxb1 21.Txb1 cxd5
22.Txb7 e4 23.Df4 f5 24.Dh6 Df6



25.Dxh7#

1-0