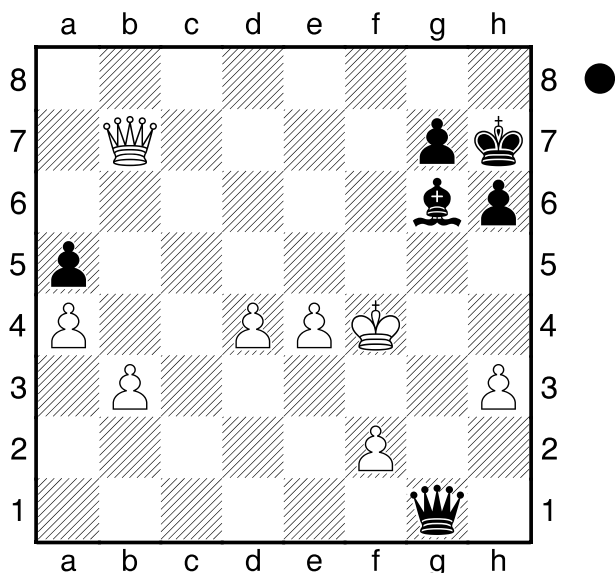


Dermann
 Becker
 Deutschland
 [Husemann,D]

2008



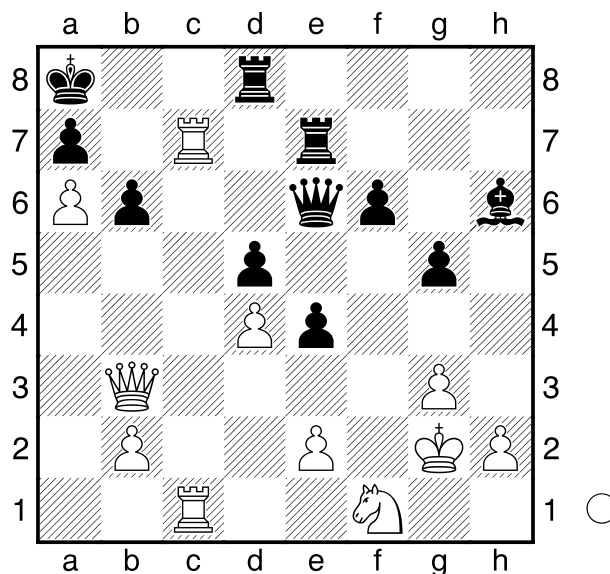
Wie gewinnt Schwarz am Zuge jetzt?
 1...Dg5+ 2.Kf3 Lh5#
0-1

Demina,J
 Jakowitsch,J
 St. Petersburg EM Damen
 [Husemann,D]

2009

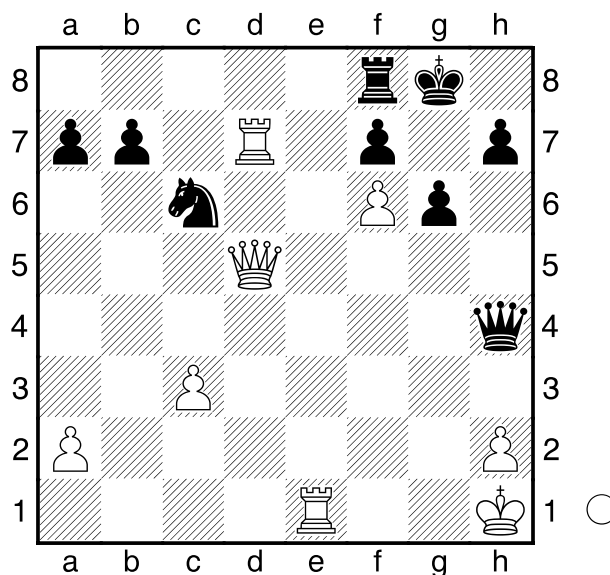
(Diagramm)

Wie gewinnt Weiß am Zuge nun?
1.Dxd5+! Txd5
 [1...Dxd5 2.Tc8+ Txc8 3.Txc8#]
 [1...Kb8 2.Db7#]
2.Tc8+ Dxc8 3.Txc8#
1-0



Apicella
 Ionescu
 Paris
 [Husemann,D]

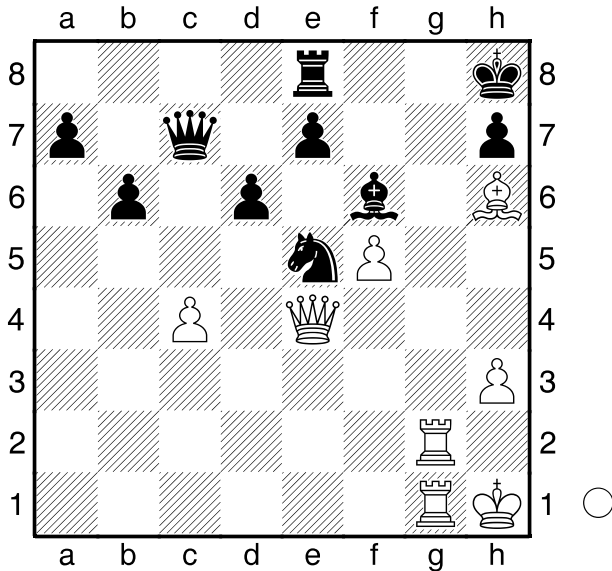
2004



Wie setzt Weiß am Zuge Matt?
 1.Dxf7+! Txf7 2.Te8+ Tf8 3.Tg7+
 Kh8 4.Txf8#
1-0

□ Krause,U
 ■ Rahls,P
 2. Bundesliga
 [Husemann,D]

2004



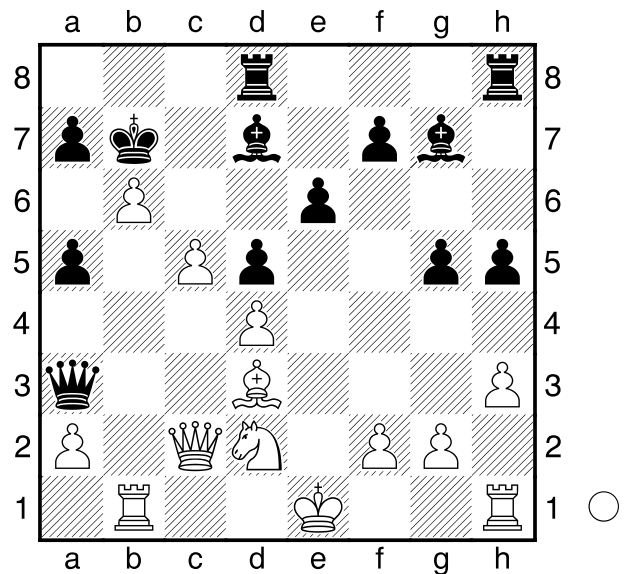
Wie gewinnt Weiß am Zuge?
 1.Tg8+! Txc7 2.Txc7+ Kxc7 3.Da8+
 Kf7 4.Df8#
1-0

□ Al-Sayed,M
 ■ Georgiev,K
 Schnellschach WM
 [Husemann,D]

2013

(Diagramm)

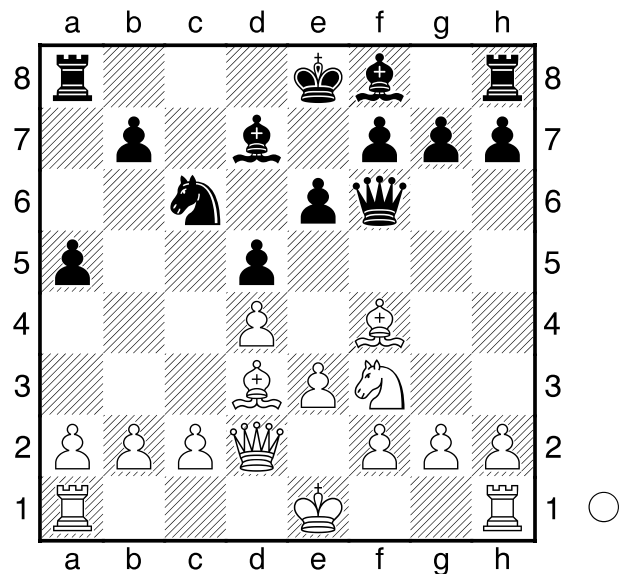
Wie macht Weiß am Zuge nun alles
 klar?
 1.c6+! Lxc6 2.La6+! Kxa6 3.Dxc6
 Lxd4 4.bxa7+ Kxa7 5.Db7#
1-0



D02

□ Bykovskij,Sergej 1930
 ■ Schulze,Dr. Peter 1379
 15. Magdeburger Open (1) 09.08.2007
 [Husemann,D]

1.d4 d5 2.Sf3 e6 3.Lf4 Sc6 4.e3
 Sf6 5.Ld3 Se4 6.Sbd2 Sxd2 7.Dxd2
 Df6 8.Lxc7 Ld7 9.Lf4 a5



Weiß am Zuge.
 10.Lg5 Dxc5 11.Sxc5 Sb4 12.a3
 Sc6 13.Sf3 g6 14.0-0 Lg7 15.c3 0-0
 16.e4 Se7 17.Tae1 b5 18.Dg5 f6

19.Dd2 Tab8 20.b3 Sc6 21.exd5
exd5 22.b4 Lg4 23.Df4 Ld7 24.Dd6
Tbd8 25.Dxd5+ Tf7 26.Lxb5 Sb8
27.Te7
1-0