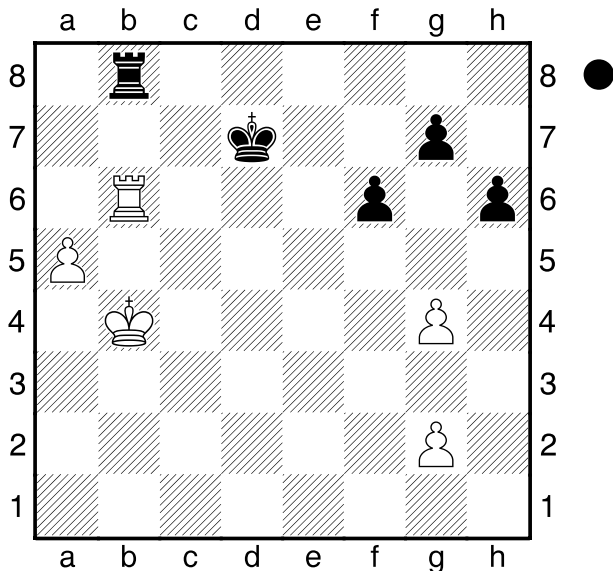


☐ **Gustafsson,J**
 ■ **Lampert,J**
 Bundesliga
 [Husemann,D]

2014



Soll Schwarz am Zuge ins Bauernendspiel gehen?

1...Txb6+! Schwarz spielte in der Partie anders und verlor. **2.axb6 Kc6 3.Ka5 Kb7 4.Kb5 g6 5.Kc5 f5! 6.gxf5 gxf5 7.Kd5 Kxb6 8.Ke5 Kc5 9.Kxf5 Kd4!**
 [9...Kd6? 10.g3! (10.g4? h5! 11.gxh5 Ke7 12.Kg6 Kf8= ; 10.Kg6? Ke5! 11.Kxh6 Kf4=)]
10.Kg6 Ke4 11.Kxh6 Kf4=

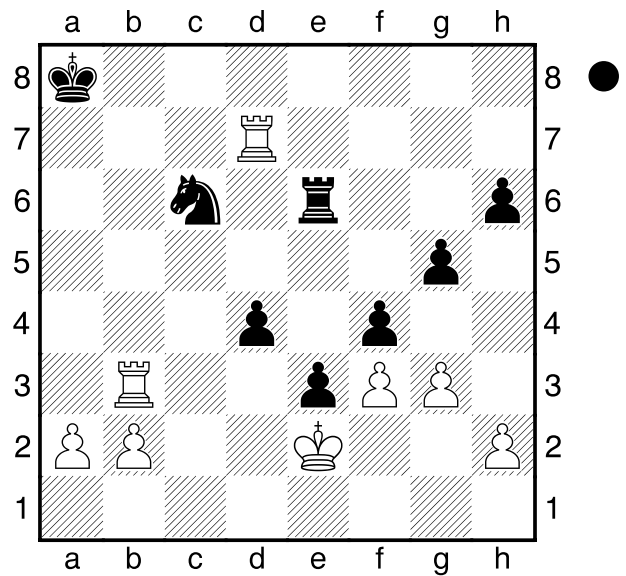
☐ **Ortiz,I R**
 ■ **Vachier-Lagrave,M**
 Worldcup
 [Husemann,D]

2013

(Diagramm)

Analysiere dieses Endspiel.

1...g4! alles andere verliert. **2.Tf7**
 [2.fxg4 f3+ 3.Kxf3 (3.Ke1 f2+



4.Ke2 Tf6-+) 3...e2-+]
 [2.Tc7 Se5-+]
 [2.gxf4 gxf3+ 3.Ke1 Tg6 4.Kf1 f2-+]
2...gxf3+ 3.Ke1
 [3.Kxf3 e2-+]
3...Se5 4.Txf4 Tc6 5.Kd1 e2+ 6.Kd2 Tc1 0-1

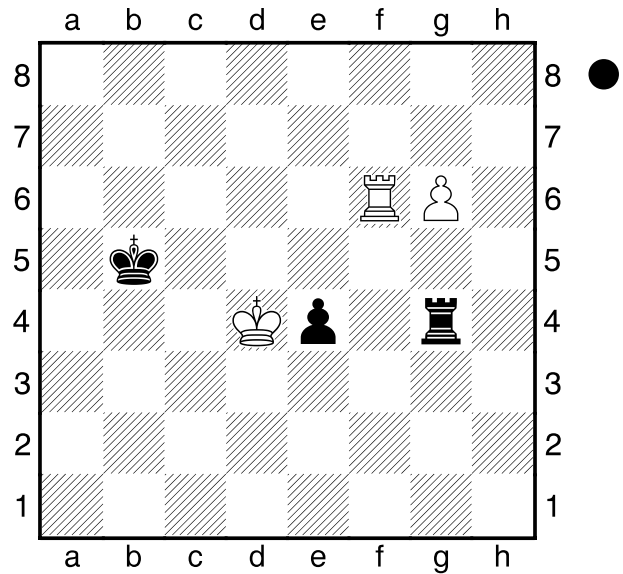
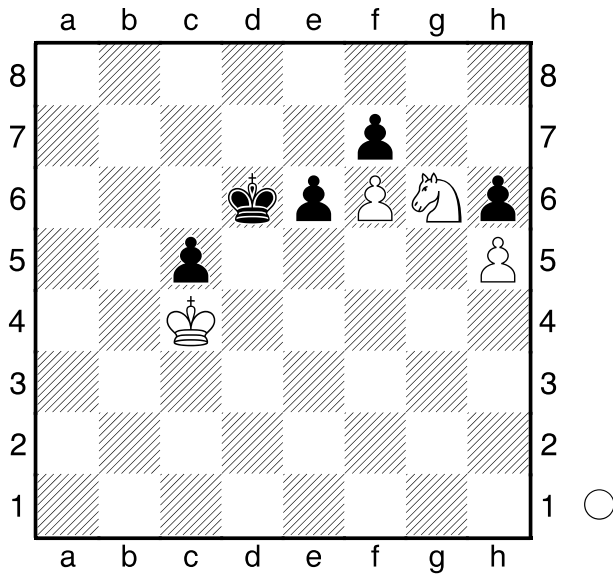
☐ **Ernst,S**
 ■ **Bok,B**
 Groningen
 [Husemann,D]

2013

(Diagramm)

Weiß am Zuge.

1.Kd3? war die Partiefortsetzung, die einen halben Punkt liegen ließ.
 [1.Se7! Ke5 2.Sg8 Kf5 3.Kxc5 e5 (3...Kg5 4.Kd6 Kxh5 5.Ke7 e5 6.Sxh6 Kxh6 7.Kxf7 e4 8.Ke6 e3 9.f7+-) 4.Kd5 e4 5.Kd4 Kf4 6.Sxh6 e3 7.Sxf7 e2 8.Se5+-]
1...e5!
 [1...fxg6? 2.hxg6+-]



2.Ke4 fxg6 3.hxg6 Ke6 4.g7 Kf7
5.Kxe5 c4!
 [5...h5? 6.Kd6 h4 7.g8D+ Kxg8
 8.Ke7+-]
6.Kd6 c3 7.g8D+ Kxg8 8.Ke7 c2
9.f7+ Kh7 10.f8D c1D

□ Melkumjan,H

■ Schenk,A

Bundesliga

2014

[Husemann,D]

(Diagramm)

Schwarz am Zuge.

1...Kb4!

[1...e3+? wurde in der Partie
 gespielt. 2.Kxe3 Kc5 3.Kf3 Tg1
 4.Ke4 Te1+ 5.Kf5]

2.Tb6+ Ka4 3.Te6 Kb4 4.Ke5 e3
5.Kf5 Tg3 6.Kf4 Tg1!=