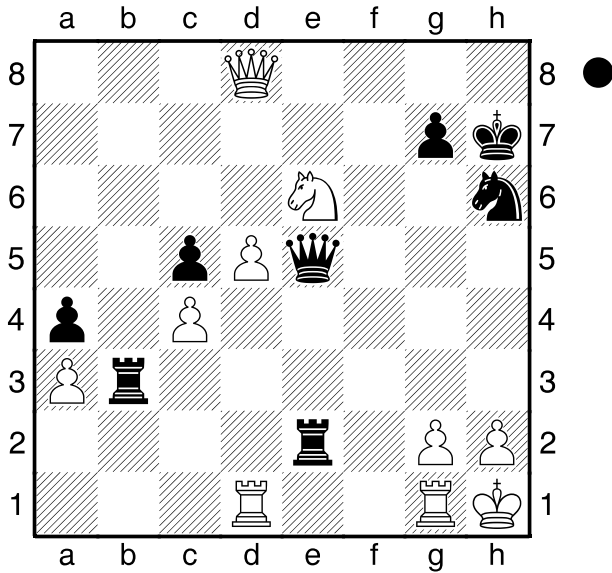


□ Polvin  
 ■ Krejcik

Wien

1954

[Husemann, D]



Was soll Schwarz am Zuge angesichts  
 der beiden Minusbauern machen?  
 1...Dxh2+! 2.Kxh2 Sg4+ 3.Kh1 Th3+!  
 4.gxh3 Th2#  
**0-1**