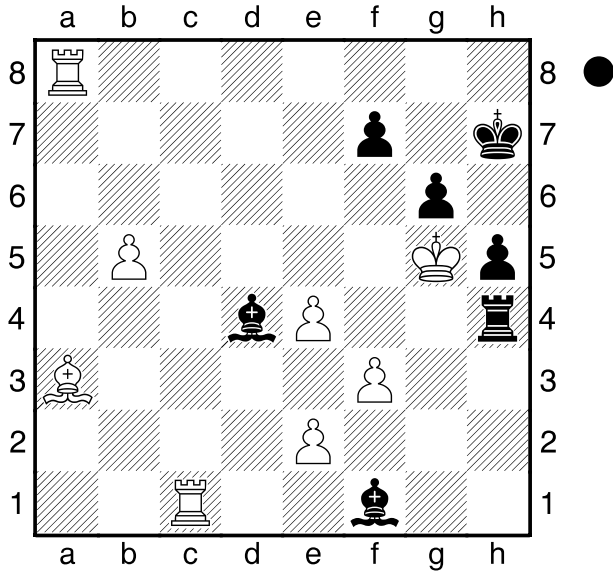


Jianu
 Roganovic
 Bukarest
[Husemann,D]

2009



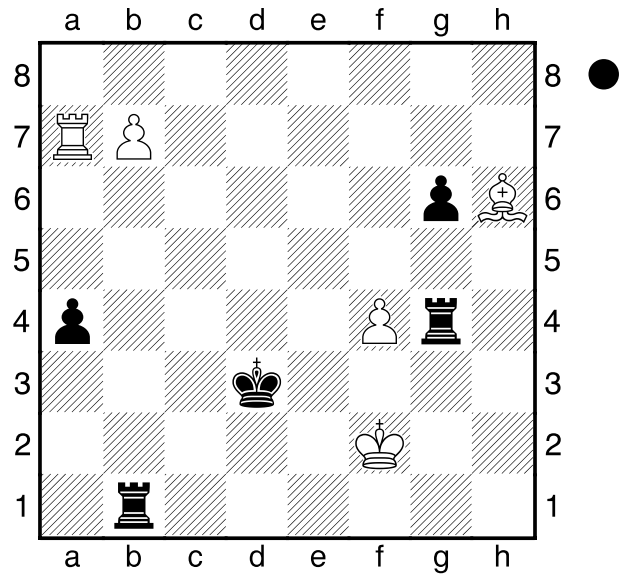
Wie sollte Schwarz am Zuge
 fortfahren?
 1...f6+ 2.Kxh4 Lf2#
0-1

Movsesian
 Jewsejew
 Moskau
[Husemann,D]

2006

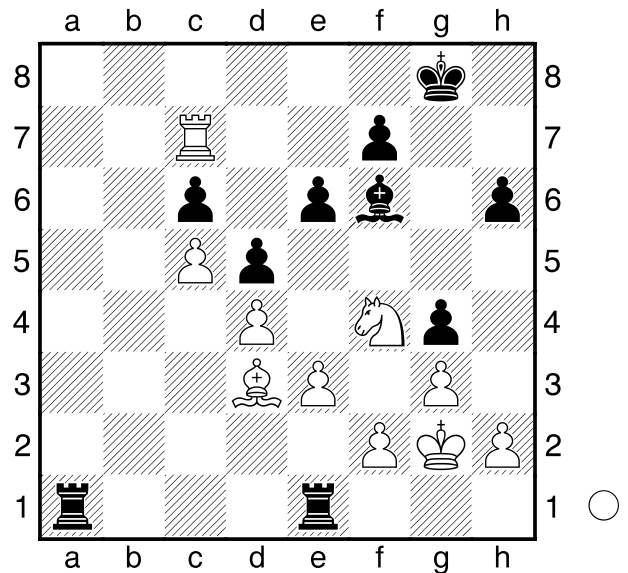
(Diagramm)

Was soll Schwarz am Zuge hier
 machen?
 1...Tgg1! und Tbf1# ist nicht zu
 verhindern.
0-1



Golubic
 Filipovic
 Bosnjaci
[Husemann,D]

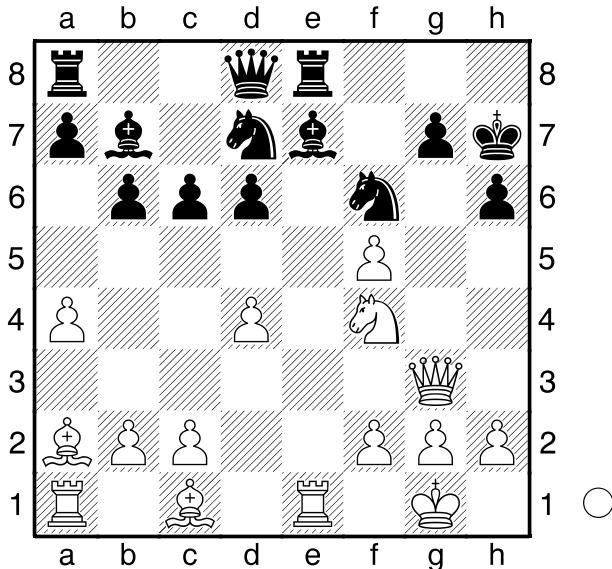
2009



Was kann Weiß angesichts der
 Drohung Tg1# machen?
 1.Tc8+ Ld8 2.Txd8+ Kg7 3.Sh5#
1-0

□ Johannessen,L
 ■ Groenn,A
 Norwegen
 [Husemann,D]

2013



Wie sollte Weiß am Zuge fortfahren?

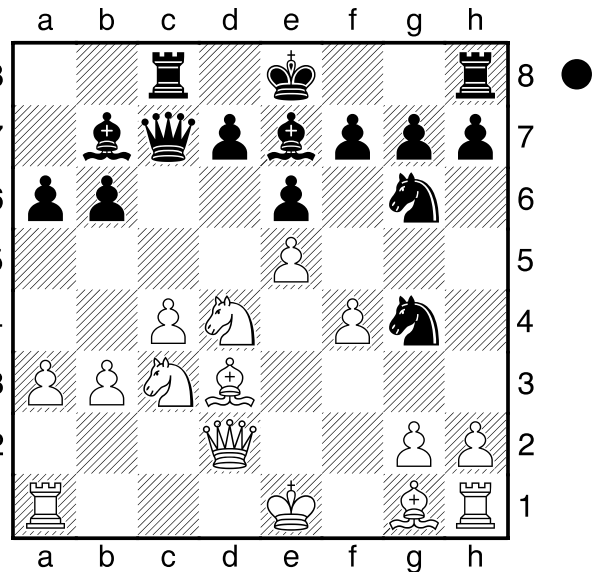
- 1.Se6!**
 [1.Dg6+ Kh8 2.Se6 Lf8 3.Sxd8??
 Txe1#]
- 1...Lf8 2.Sg5+!**
 [2.Sxd8?? Txe1#]
- 2...hxg5**
 [2...Kh8 3.Sf7+ Kg8 (3...Kh7
 4.Dg6+ Kg8 5.Sxd8+-) 4.Sxd8+-]
- 3.Dh3+ Sh5 4.Dxh5#**
 1-0

□ Grandadam,N
 ■ Kurmann,O
 Zug
 [Husemann,D]

2013

(Diagramm)

Wie kommt Schwarz am Zuge in
 Vorteil?



- 1...Sxf4! 2.Dxf4 Sxe5 3.Ke2**
 [3.Dd2 Sxd3+ 4.Dxd3 Lxg2]
- 3...Lxg2 4.Le3 Lxh1 5.Txh1**
 0-1

C50

□ Riedel,David
 ■ Kleinelütern,Kevin
 BJEM U12 (7)
 [Husemann,D]

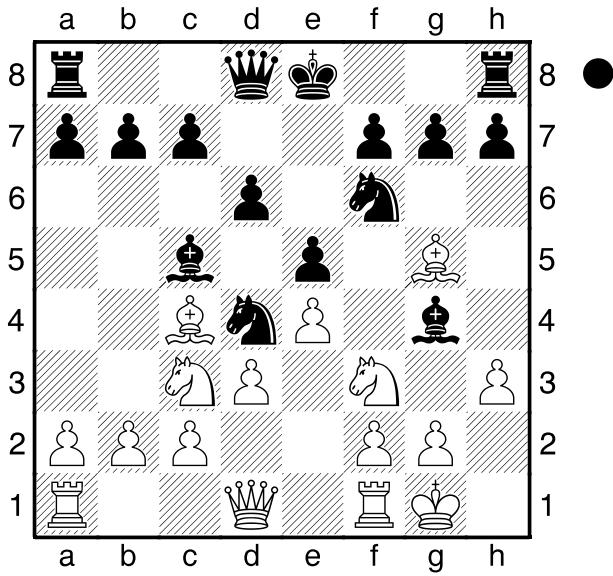
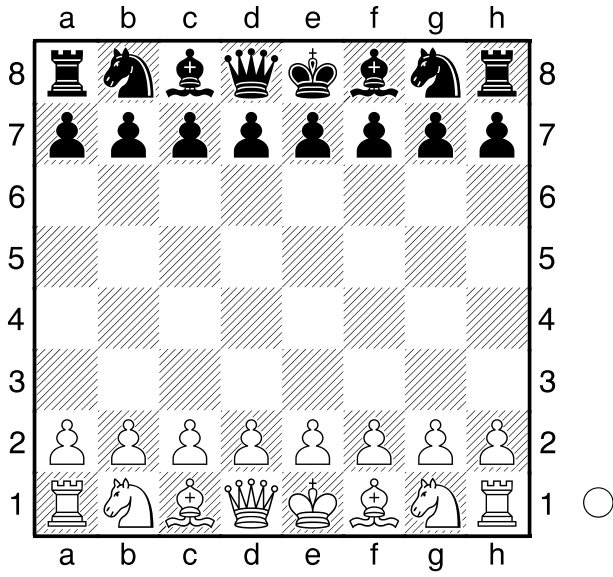
1069
 16.09.2007

(Diagramm)

- 1.e4 e5 2.Sf3 Sc6 3.Lc4 Lc5 4.d3**
Sf6 5.Lg5 d6 6.Sc3 Lg4 7.0-0 Sd4
8.h3

(Diagramm)

- Schwarz am Zuge.
Sxf3+ 9.gxf3 Lxh3 10.Te1 h6
11.Lh4 g5 12.Lg3 g4 13.Sd5 Sxd5
14.Lxd5 Tg8 15.Lxb7 Tb8 16.Lc6+
Ke7 17.Lh4+ f6 18.Ld5 gxf3+
19.Lg3 Tg7 20.Dxf3 Dd7 21.Tad1
h5 22.Dxh5 Txb2 23.Te2 Lg4
24.Dh2 Lxe2 25.Te1 Txc2 26.Lb3
Tb2 27.Dh4 Dg4 28.Dxg4 Lxg4



29.Ld5 Lf3 30.Tc1 Txc3+ 31.Kf1
 Txf2+ 32.Ke1 Tg1#
 0-1