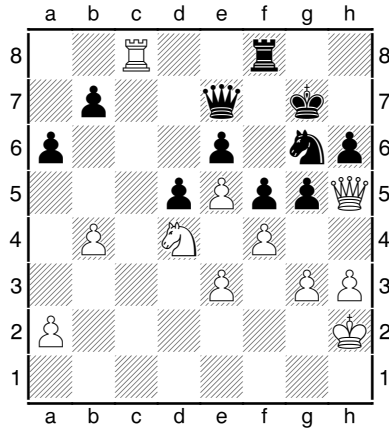


# taktische Motive Blatt Nr. 4

Thema: \_\_\_\_\_

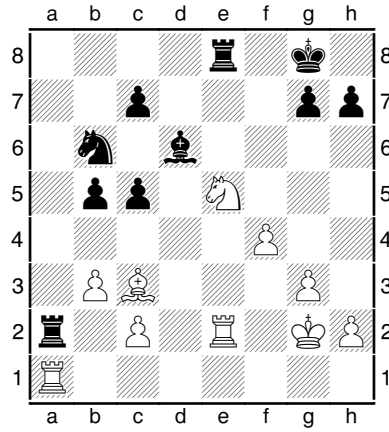
typische Merkmale: \_\_\_\_\_

## Aufgabe 1



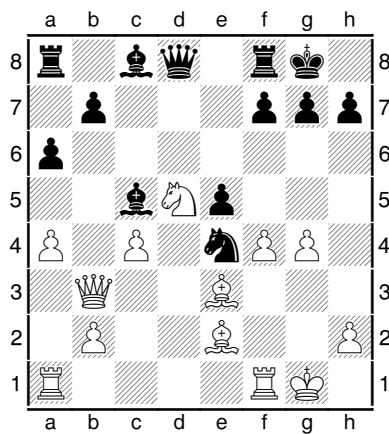
Weiß am Zuge

## Aufgabe 4



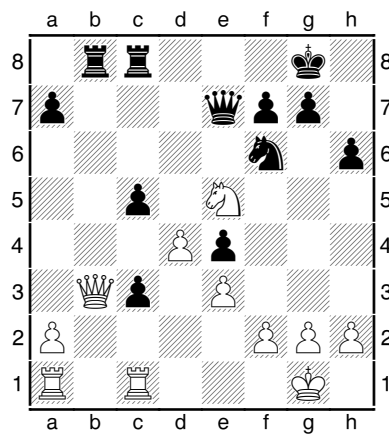
Schwarz am Zuge

## Aufgabe 2



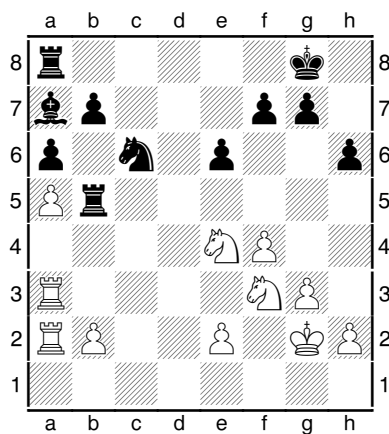
Schwarz am Zuge

## Aufgabe 5



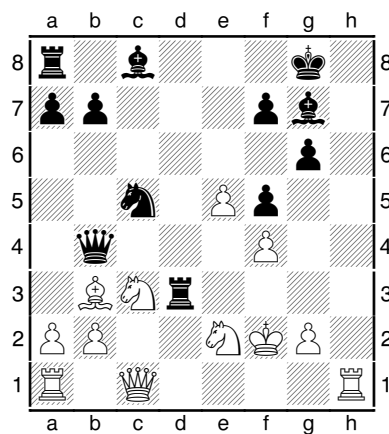
Weiß am Zuge

## Aufgabe 3



Schwarz am Zuge

## Aufgabe 6



Schwarz am Zuge