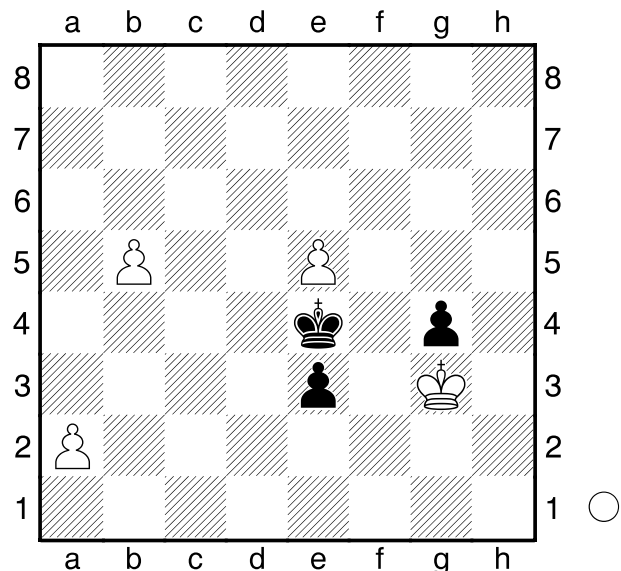


Raetsky,A
 Banusz,T
 Biel 2014
 [Husemann,D]



Weiß am Zuge.

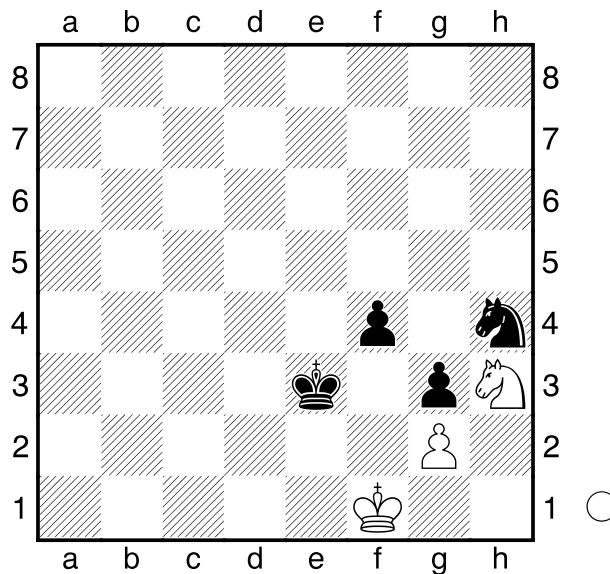
- 1.e6?**
 [1.b6! e2 2.Kf2 Kd3 3.b7 g3+
 4.Kg2 e1D 5.b8D Df2+ 6.Kh3
 Dh2+ 7.Kg4 g2 8.Db3+!
 Dauerschach Kd4 9.Db4+ Kxe5?
 10.Db8+ Ke4 11.Dxh2+-]
- 1...e2 2.Kf2 Kd3 3.e7**
 [3.Ke1 g3 4.e7 g2 5.e8D g1D#]
- 3...g3+**

Dekic,J
 Anic,D
 Kroatien 2014
 [Husemann,D]

(Diagramm)

Weiß am Zuge.

- 1.Sg5**
 [1.Kg1 Sf5 2.Sg5=]
 [1.Sg1? war die Partiefortsetzung. f3



- 2.gxf3 (2.Sxf3 Sxf3 3.gxf3 Kxf3
 4.Kg1 g2 5.Kh2 Kf2-+) 2...g2+
 3.Ke1 Sxf3+ 4.Sxf3 Kxf3
 und Weiß resignierte.]

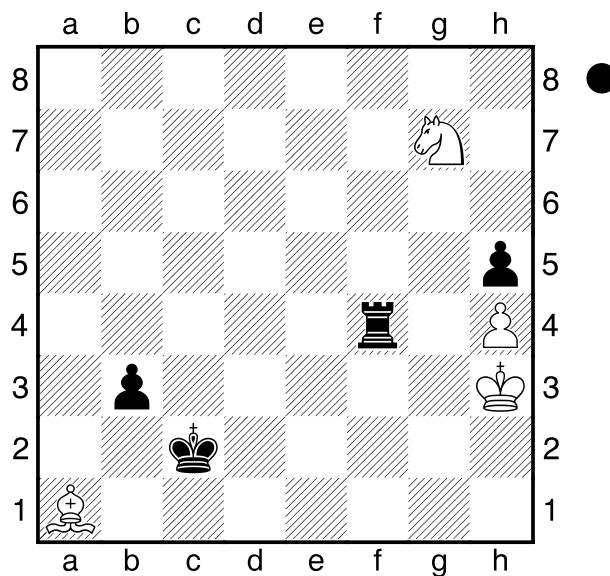
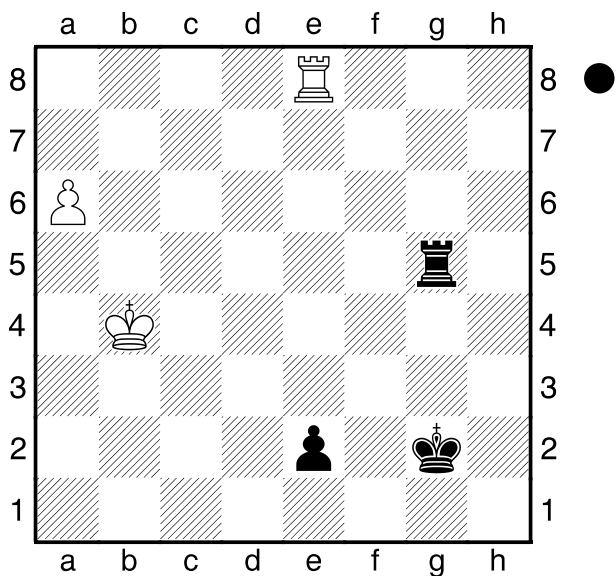
- 1...f3 2.gxf3**
 [2.Sxf3? Sxf3 3.gxf3 Kxf3 4.Kg1
 g2 5.Kh2 Kf2-+]
- 2...Sxf3**
 [2...g2+ 3.Kg1 Kf4 4.Se4 Kxf3
 5.Sg3=]
- 3.Kg2!** und remis

Frolov,A
 Gluchow,A
 Kazan 2012
 [Husemann,D]

(Diagramm)

Schwarz am Zuge.

- 1...Tg4+?**
 [1...Kf2! 2.a7 Tg8! 3.Txg8 (3.a8D
 e1D+ 4.Txe1 Txa8=) 3...e1D+
 4.Kb5 De5+ 5.Kb6 De6+ 6.Kb7
 Dxc8 7.a8D]
- 2.Kb3!**
 [2.Kb5? Tg5+ 3.Kb6 Tg6+ 4.Kb7



Txa6 5.Kxa6 Kf1=]
2...Tg3+ 3.Kb2 Kf2
 [3...Tg6 4.Txe2+ Kf3 5.a7 Ta6
 6.Te7+-]
4.a7 Te3 5.Tf8+ Kg1 6.Tg8+!
 [6.a8D? e1D 7.Tg8+ Tg3 8.Da7+
 Df2+=]
6...Kf1 7.a8D e1D 8.Dg2#

□ Yu,C
 ■ Sevillano,E
 Las Vegas
 [Husemann,D]

2014

(Diagramm)

Schwarz am Zuge.

1...Tf1!
 [1...b2? 2.Lxb2 Kxb2 3.Sxh5=]
2.Le5 Tf3+ 3.Kg2 Tc3!
0-1