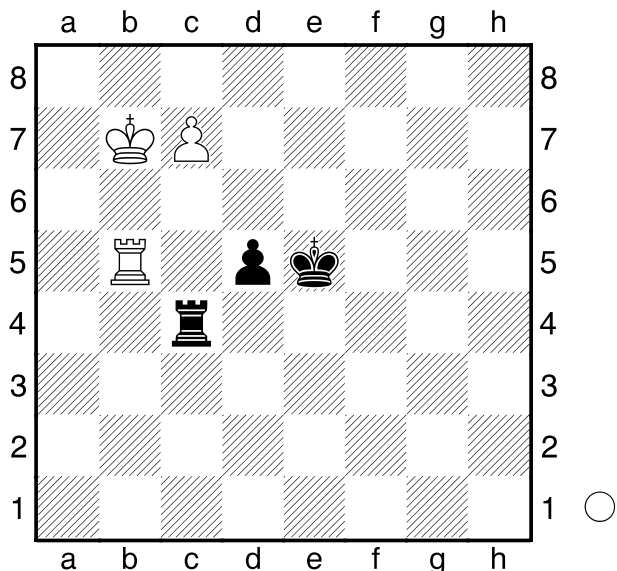


**Cheng,B**  
 **Smirnov,A**  
 Melbourne  
 [Husemann,D]

2013



Weiß am Zuge.

**1.Tb6!** droht Tc6

[ 1.c8D? Txc8 2.Kxc8 Ke4 3.Kd7 d4 4.Kd6 d3 5.Td5 Ke3 6.Kc5 Ke2 7.Kc4 d2= ]

**1...Txc7+ 2.Kxc7 d4 3.Td6 Ke4 4.Kc6 Ke3 5.Kc5 d3 6.Kc4 d2 7.Kc3+-**

**Hungeling,D**  
 **Simukov,E**  
 DVM U10  
 [Husemann,D]

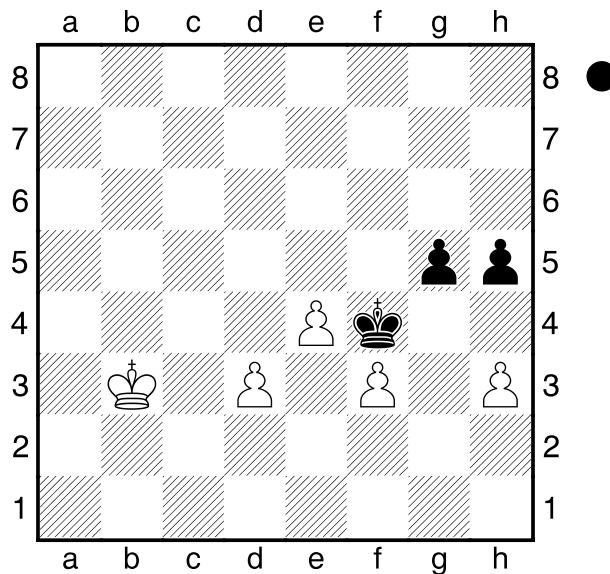
2013

(Diagramm)

Schwarz am Zuge.

**1...h4! 2.d4**

[ 2.Kc4 Kxf3 3.e5 g4 4.e6 g3 5.e7 g2 6.e8D g1D 7.De4+ Kg3 8.Dg4+ Kh2 9.Dxh4 ( 9.Dxg1+ Kxg1 10.d4 Kg2 11.d5 Kxh3 12.d6 Kg2 13.d7



h3 14.d8D h2= )]  
**2...Kxf3 3.e5 g4 4.e6**  
 [ 4.hxg4 h3 5.e6 h2 6.e7 h1D 7.e8D Dd1+ 8.Kc4 Dc2+ 9.Kd5 Db3+ 10.Kc5 Dc3+ 11.Kd5 Db3+= ]  
**4...g3 5.e7 g2 6.e8D g1D**  
 mit guten Remischancen für Schwarz.

**Harikrishna,P**  
 **Edouard,R**  
 Gibraltar  
 [Husemann,D]

2014

(Diagramm)

Schwarz am Zuge.

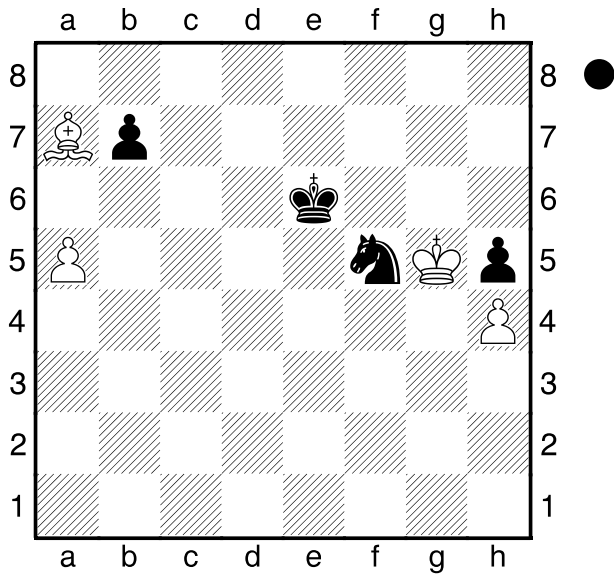
**1...Sxh4! 2.Kxh4 Kd7 3.Kxh5**

[ 3.Lb6 Kc8 4.Kxh5 Kb8 5.Kg6 Ka8 6.Kf7 Kb8 7.Ke7 Ka8 8.Kd7 Kb8= ]

**3...b6! 4.axb6**

[ 4.Lxb6 falscher Läufer ]

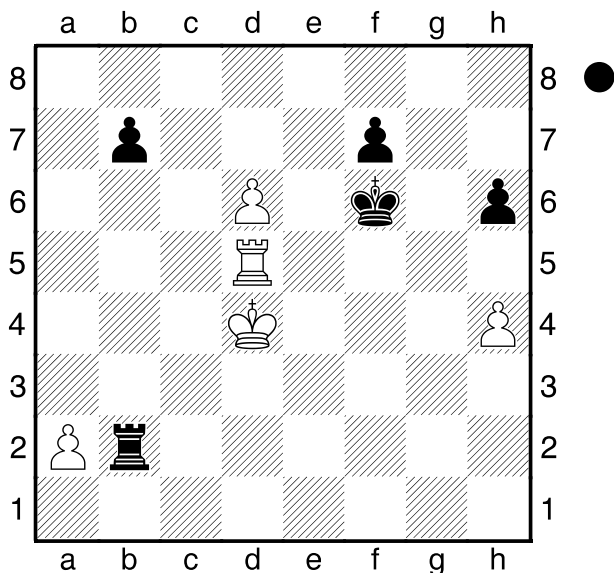
**4...Kc6 5.Kg5 Kb7 6.Kf5 Ka8 7.Ke5 Kb7 8.Kd5 Ka8** und Weiß kann nicht gewinnen.



[ 2.d7? Td2+ 3.Kc5 Txd5+ 4.Kxd5 Ke7-+ ]  
**2...Ta8 3.Th5 Td8 4.Txh6+ Kg7**  
**5.Th5 Txd6 6.Tb5=**

□ Mista,A  
 ■ Renner,C  
 Bundesliga  
 [Husemann,D]

2014



Schwarz am Zuge.

**1...Txa2!**

[ 1...Td2+? war die Partiefortsetzung.  
 2.Kc5 Tc2+ ( 2...Txd5+ 3.Kxd5+- b5  
 4.a3 h5 5.Kc6 ) 3.Kb6 Tb2+  
 4.Kc7+- ]

**2.Kc4**