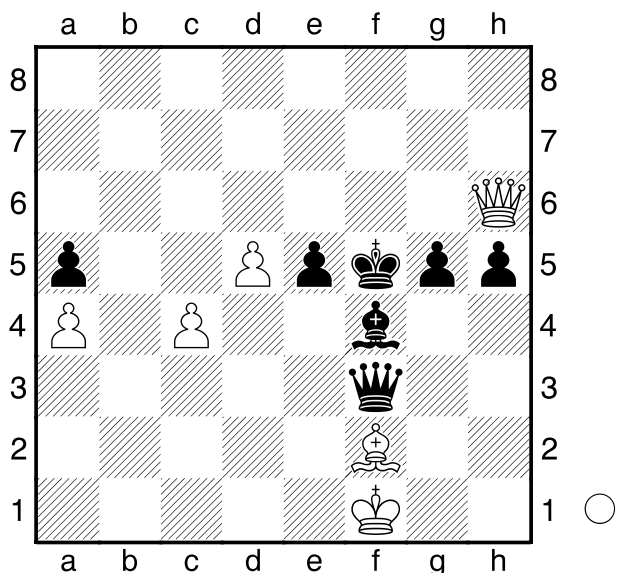


Cabrera,M
 Solis,E
 Moravia
 [Husemann,D]

2008



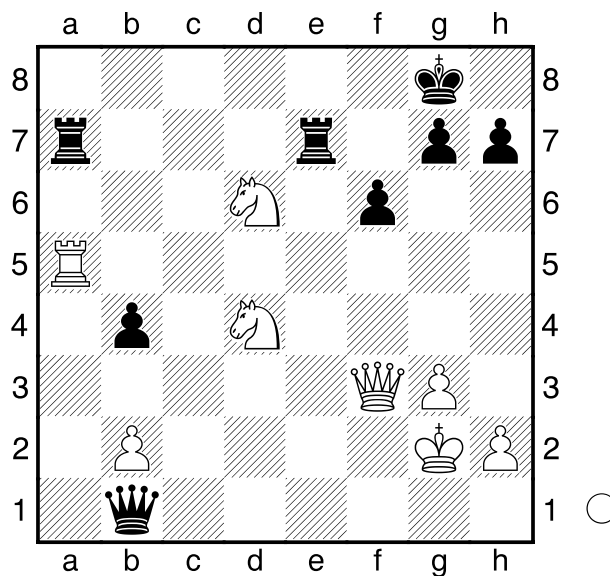
Weiß am Zuge.
 1.De6+ Ke4 2.Dg6#
1-0

Nakamura
 Swidler
 Tal Memorial Moskau
 [Husemann,D]

2011

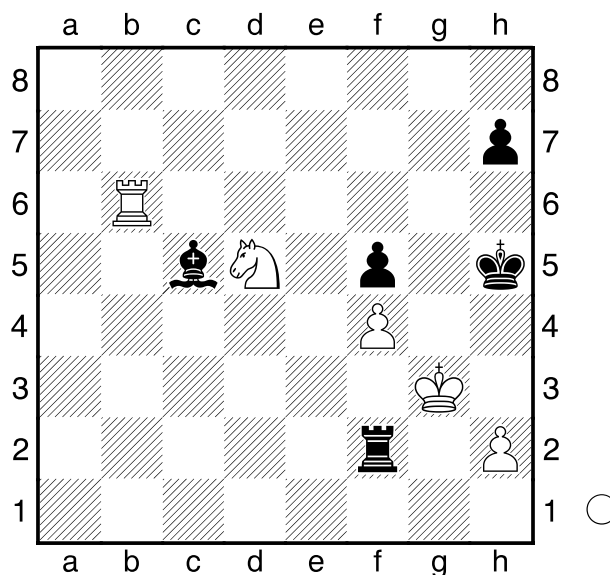
(Diagramm)

Was sollte Weiß am Zuge nun ziehen?
 1.Da8+! Txa8 2.Txa8+ Te8 3.Txe8#
1-0



Schäfer,M
 Schlosser,P
 Bundesliga
 [Husemann,D]

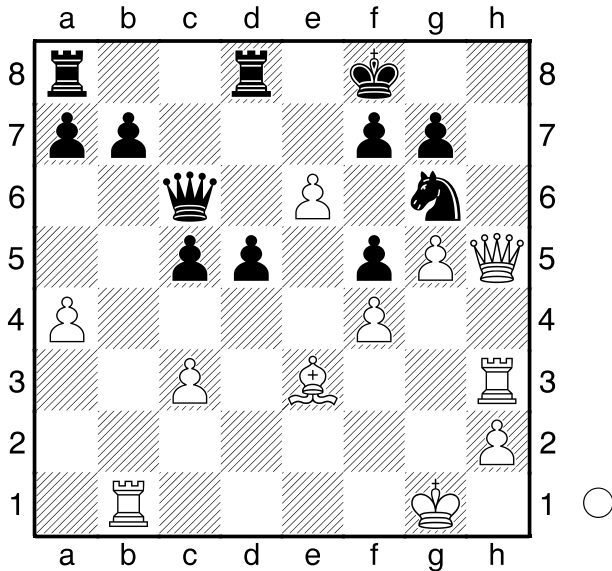
2012



Wie gewinnt Weiß am Zuge nun?
1.Sf6+ Kg6
 [1...Kh6 2.Tc6+-]
2.Tc6 Tc2 3.Sd7+
1-0

□ Jasnikowski
 ■ Westphal
 2. Bundesliga
 [Husemann,D]

2000



Was kann Weiß am Zuge nun machen?

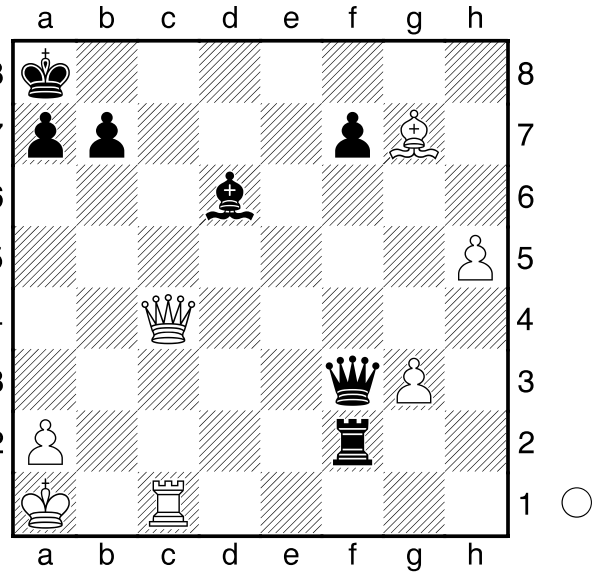
- 1. **Txb7!** nun droht Dh8+ nebst Matt
 - Dxb7** auch andere Züge helfen nicht.
 - 2. **Lxc5+ Ke8**
 [2...Kg8 3.Dh7#]
 - 3. **Dh8+! Sxh8**
 [3...Sf8 4.Dxf8#]
 - 4. **Txh8#**
- 1-0

□ Andrejew
 ■ Aleskerow
 Tscherepowez
 [Husemann,D]

2005

(Diagramm)

- Was macht Weiß am Zuge jetzt?
- 1. **Dc8+ Lb8**
 - 2. **Dxb8+! Kxb8**
 - 3. **Le5+**



Ka8 4. **Tc8#**
 1-0

A45

□ Stockhuß, Kevin 1663
 ■ Fahle, Karl-Wilhelm 1141
 Dortmund B (1) 22.06.2007
 [Husemann,D]

- 1. **d4 Sf6**
- 2. **Lg5 e6**
- 3. **e4 Le7**
- 4. **Sd2 c6**
- 5. **Ld3 0-0**
- 6. **c3 d6**
- 7. **Dc2 e5**
- 8. **Sgf3 Dc7**
- 9. **h4 Lg4**
- 10. **Sh2 Lh5**

(Diagramm)

Weiß am Zuge.

- 11. **Lxf6 Lxf6**
 - 12. **g4 d5**
 - 13. **gxh5 De7**
 - 14. **0-0-0 Sd7**
 - 15. **exd5 cxd5**
 - 16. **dxe5 Sxe5**
 - 17. **Lxh7+ Kh8**
 - 18. **Shf3 Sg4**
 - 19. **Sb3 Tfd8**
 - 20. **Lf5 Sh6**
 - 21. **Sbd4 a6**
 - 22. **Kb1 Tac8**
 - 23. **Lxc8 Txc8**
 - 24. **Tde1 Dc5**
 - 25. **Sb3 Db6**
 - 26. **Sg5 Lxg5**
 - 27. **hxg5 Sg4**
 - 28. **f3 Se3**
 - 29. **Dd2 Sf5**
 - 30. **h6 Kh7**
 - 31. **hxg7+ Kxg7**
 - 32. **Dxd5 Dg6**
 - 33. **De5+ f6**
 - 34. **gxf6+ Dxf6**
 - 35. **Th7+ Kg6**
 - 36. **Tg1+**
- 1-0

