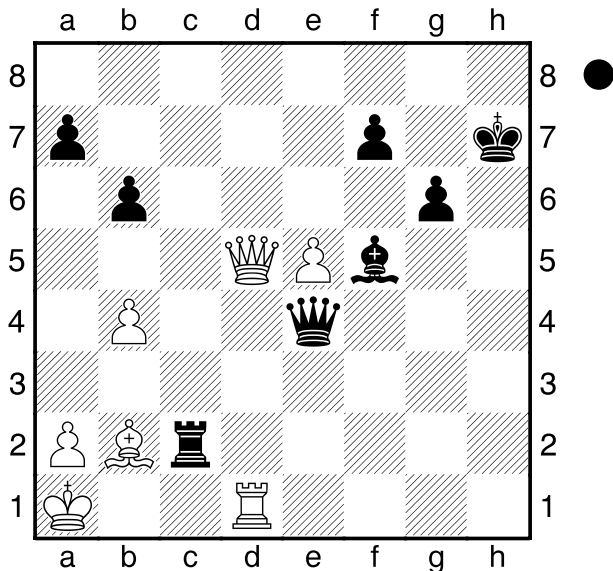


Visnevecky
 Auerbach
 Lvov
 [Husemann,D]

1912



Wie kommt Schwarz am Zuge in Vorteil?

1...Tc1+! **2.Txc1**
 [2.Lxc1 Db1#]
2...Dxd5
0-1

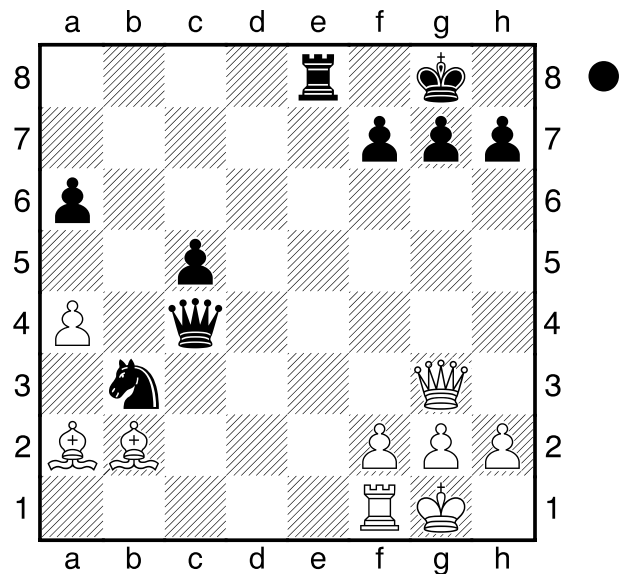
Ledesma
 Diaz,W
 Buenos Aires
 [Husemann,D]

2002

(Diagramm)

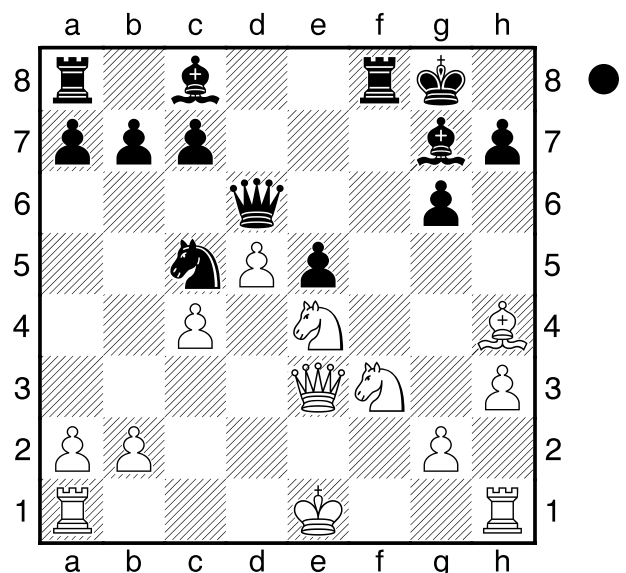
Wie sollte Schwarz am Zuge nun fortfahren?

1...Dxf1+! **2.Kxf1** **Sd2+** **3.Kg1** **Te1#**
0-1



Narva
 Seeman
 Keres Memorial Tallinn
 [Husemann,D]

2012



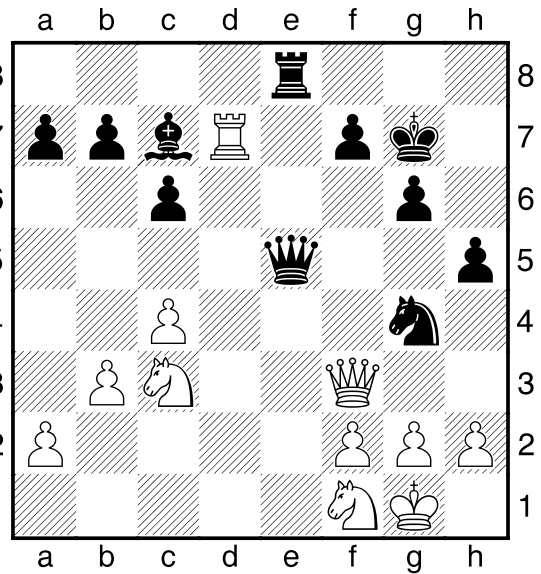
Was soll Schwarz am Zuge nun machen?

1...Sxe4 **2.Dxe4** **Db4+** **3.Sd2**
 [3.Kd1 Dxb2+-]
 [3.Ke2 Dxb2+ 4.Sd2 Tf4+-]
 [3.Kf2 Dxb2+ 4.Kg3 Lf5 5.De3 e4
 6.Tab1 Dxa2 7.Sd2 Le5+-+]

[3.Kf1 Dxb2 4.Te1 Dxa2-+]
3...Tf4
0-1

□ Szabo
 ■ Balasz
 Ungarn
 [Husemann,D]

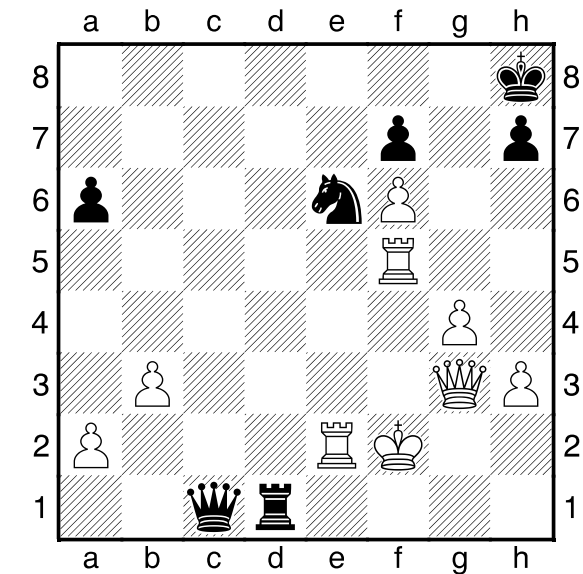
2008



4.Kh1 Txf1#
0-1

□ Niemeyer,Sarah
 ■ Zielke,Kim
 NRW U16w (1)
 [Husemann,D]

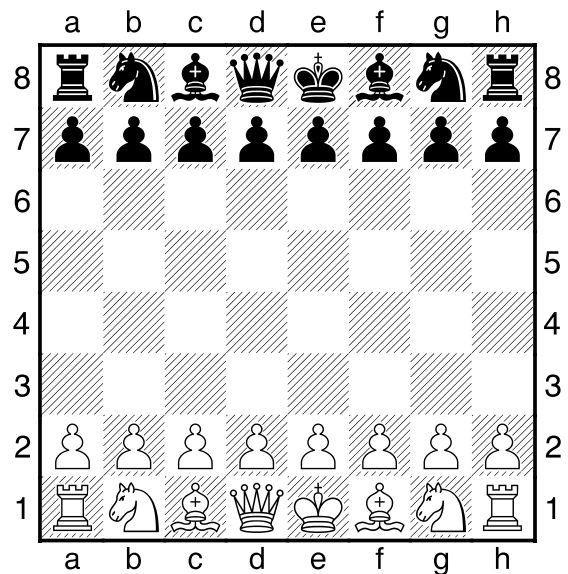
C62
1433
949
 09.04.2007



Wie gewinnt Weiß am Zuge nun?
1.Db8+ Td8
 [1...Sd8 2.Te8#]
2.Dxd8+! Sxd8 3.Te8#
1-0

□ Forster,T
 ■ Konig,B
 Ungarn
 [Husemann,D]

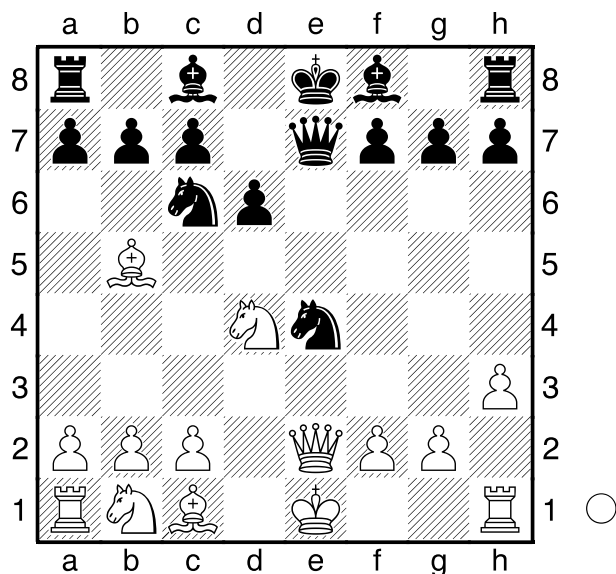
2003



1.e4 e5 2.Sf3 Sc6 3.Lb5 d6 4.h3
Sf6 5.d4 exd4 6.Sxd4 Sxe4 7.De2
De7
 Weiß am Zuge. **8.Sxc6 bxc6 9.Lxc6+**
Ld7 10.Lxa8 d5 11.Lxd5 Lf5

(Diagramm)

Was sollte Schwarz am Zuge nun unternehmen?
 1...Dxh2+! 2.Sxh2 Te1+ 3.Sf1 Lh2+



12.Lxe4 Lxe4 13.Sc3 Lxg2
14.Dxe7+ Lxe7 15.Tg1 Lxh3
16.Txg7 Lf6 17.Tg3 Lf5 18.Te3+
Kf8 19.Tf3 Lxc3+ 20.Txc3 h5 21.Lf4
h4 22.0-0-0 h3 23.Td8+ Kg7
24.Txh8 Kxh8 25.Txc7 Kg7 26.Txa7
Kg6 27.f3 f6 28.c4 Kh5 29.Ta8 Ld3
30.c5 Lc4 31.c6 Ld5 32.Th8+ Kg6
33.c7 Lb7 34.c8D Lxc8 35.Txc8 Kf5
36.Lh2 Ke6 37.b4 Kd7 38.Tc7+ Kd8
39.b5 f5 40.b6 f4 41.Lxf4 h2
42.Lxh2 Ke8 43.b7 Kd8 44.b8T#
1-0