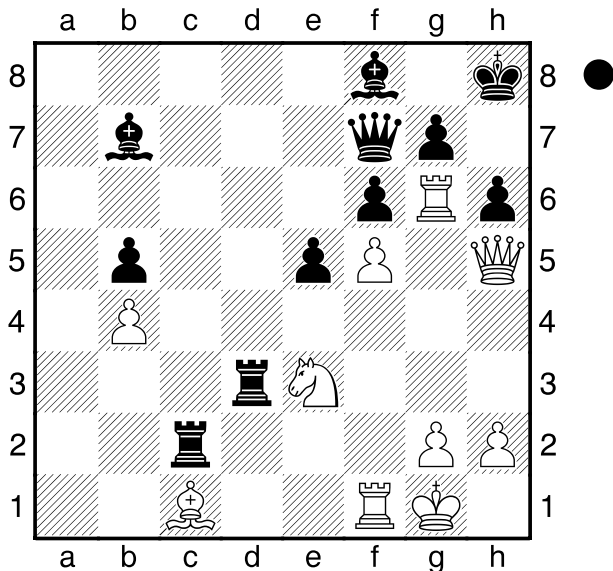


□ Schukow  
 ■ Hammar  
 Opatja  
 [Husemann,D]

2013



Schwarz am Zuge.

**1...Txe3 2.Lxe3**

[ 2.Txh6+ gxh6 3.Dxf7 Txg2+ 4.Kh1 Th3+- ]

**2...Txg2+ 3.Txg2 Dxh5**

**0-1**

□ Karjakin,S  
 ■ Naiditsch,A

Wijk an Zee  
 [Husemann,D]

2014

(Diagramm)

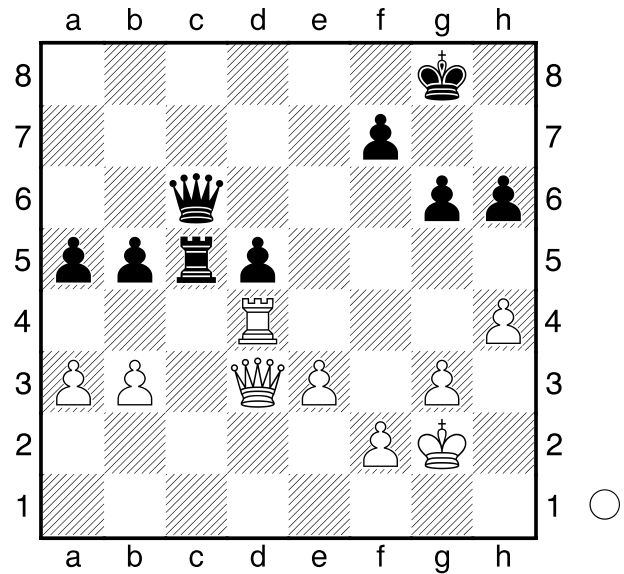
Weiß am Zuge.

**1.Dd2?!**

[ 1.e4!

**A)** 1...dxe4 2.Td8+ Kh7 3.Dd4 f6 4.Td7+ Kg8 5.Te7+- ( 5.Td6+- );

**B)** 1...Tc3 2.exd5! Txd3 ( 2...Dc5 3.De4+- ) 3.dxc6 Tc3 ( 3...Txd4 4.c7+- ) 4.Tc4! bxc4 5.b4 axb4



6.axb4 Ta3 7.c7 Ta8 8.b5 c3

9.b6 c2 10.b7 Tf8 11.c8D+- ]

**1...Tc3 2.Txd5 Txb3** und Weiß konnte das langwierige Endspiel schließlich gewinnen.

□ Harikrishna,P  
 ■ Nakamura,H

Wijk an Zee  
 [Husemann,D]

2014

(Diagramm)

Was soll Weiß am Zuge angesichts des angegriffenen Ta7 machen?

**1.Sh5! Lg7**

[ 1...Dxa7 2.Sf6+ Kh8 3.Lxf8 Txf8 4.Dh6+- ]

[ 1...gxh5 2.Dg5+ Kh8 3.Df6++- ]

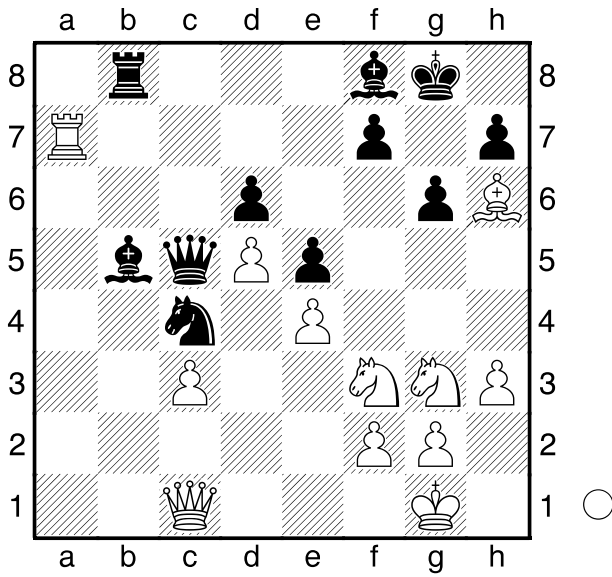
**2.Lxg7 Dxa7 3.Dh6 f5**

[ 3...gxh5 4.Lf6+- ]

[ 3...f6 4.Sxf6+ Kf7 5.Sg5+ Ke7

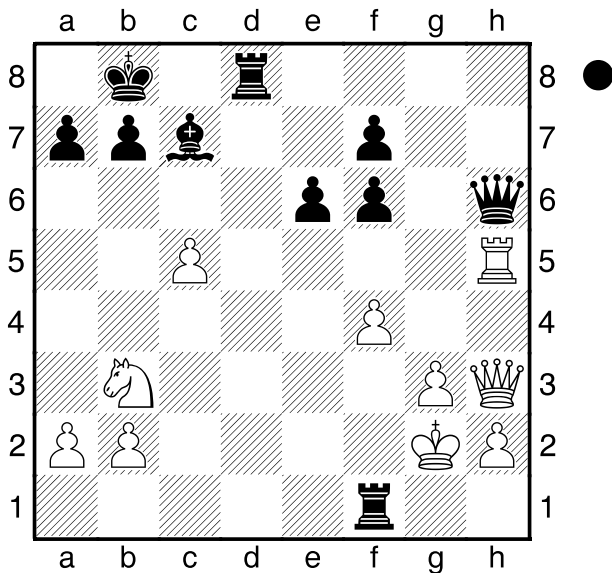
6.Se6+- ]

**4.Sg5**



van Wely,L  
 Gelfand,B  
 Wijk an Zee  
 [Husemann,D]

2014



Wie geht es für Schwarz am Zuge weiter?

- 1...Dg6! 2.Kxf1 Db1+**  
 [ 2...Td1+ ]  
**3.Ke2 Dxb2+ 4.Kf3 Td3+ 5.Kg4 f5+**  
**6.Kh4 Ld8+ 7.Tg5 Dh8#**