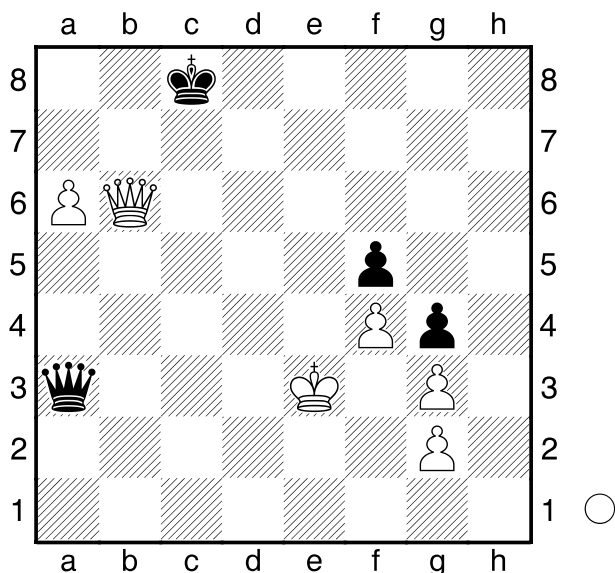


Babula,V
 Neuman,P
 Tschechien
 [Husemann,D]

2013



Weiß am Zuge.

1.Kd4?

[1.Ke2 Da2+ 2.Kd3 Da3+ 3.Kc2 Da2+ 4.Db2 Dxa6 5.Dh8+ Kc7 6.Dh7+ Kb8 7.Dxf5 De2+ (7...Dc4+ 8.Kd2 Dd4+ 9.Ke2 Db2+ 10.Ke3 Dc1+ 11.Ke4 Dc4+ 12.Ke5 Dc7+ 13.Kf6-+) 8.Kb3 Dxc2 9.Dxc4-+]

1...Dd6+! 2.Dxd6 Patt

Tregubov,P
 Givon,A
 Europacup Rhodos
 [Husemann,D]

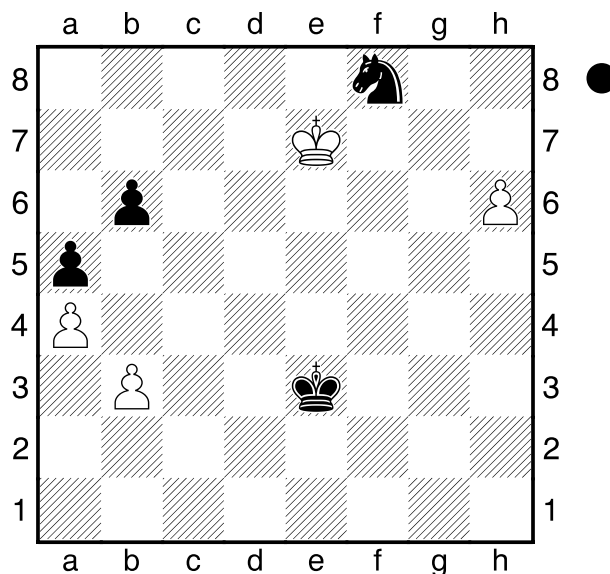
2013

(Diagramm)

Schwarz am Zuge.

1...Sg6+?

[1...Sh7! 2.Kf7 (2.Kd6 Kd4 3.Kc6 Kc3 4.Kxb6 Kb4! 5.Ka6 Sf8 6.Kb6 Sh7=) 2...Kd3 3.Kg6 Sf8+ 4.Kg7



Se6+ 5.Kf6 Sf8 6.Kf7 Sh7 7.Kg7 Sg5 8.Kg6 Se6= 9.h7? Sf8+ 10.Kg7 Sxh7 11.Kxh7-+]

2.Kf7 Se5+ 3.Kg7 und der h-Bauer ist nicht zu halten.

1-0

Hausrath,D
 Svane,Rasmus
 Bundesliga
 [Husemann,D]

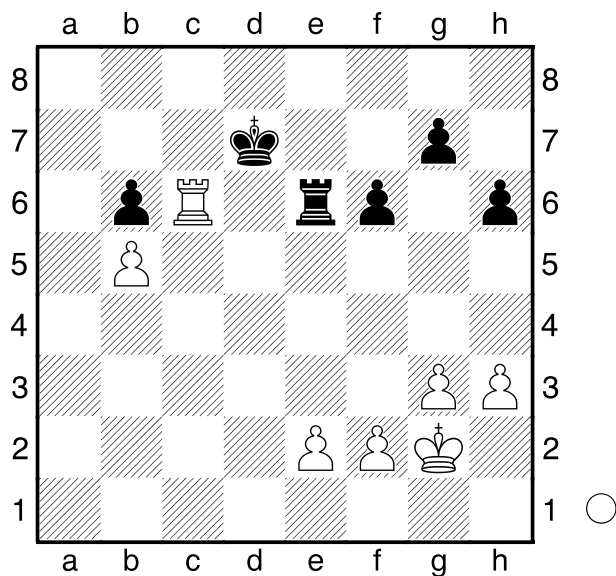
2014

(Diagramm)

Soll Weiß am Zuge die Türme tauschen oder lieber nicht?

1.Tc2? war die Partiefortsetzung, die zum Remis führte.

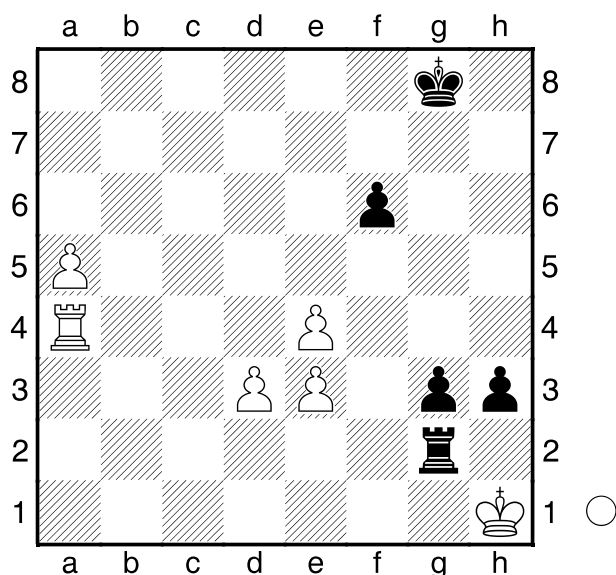
[1.Txe6! Kxe6 2.f4! Kd5 3.Kf3 Kc5 (3...Kd4 4.g4 g5 5.e4 Kc5 6.e5 fxe5 7.f5! Kd5 8.Ke3 Kc5 9.Ke4 Kd6 10.Kd3 Kc5 11.Kc3 Kd5 12.Kb4 e4 13.Kc3 Ke5 14.Kc4 h5 15.Kc3 h4 16.Kc4 e3 17.Kd3+-) 4.Ke4 Kxb5 5.Kd5! (5.Kf5?-+) 5...Ka5 6.e4 b5 7.e5 b4 8.e6 b3 9.e7 b2 10.e8D b1D 11.Da8+ Kb4



12.Db7+-]
 1/2-1/2

□ Stukopin
 ■ Kornejew
 Chanty Mansijsk 2013
 [Husemann,D]

Th2+ 3.Kg1 Tg2+ (3...Tf2?
 4.Tg4+) 4.Kh1=]
1...Th2+ 2.Kg1 Tf2!
 [2...Td2? 3.Ta1!=]
3.Ta1 h2+ 4.Kh1 g2+ 5.Kxh2 Tf1



Weiß am Zuge.
1.a6?
 [1.Ta1 Th2+ 2.Kg1 Tf2 3.Kh1
 g2+++]
 [1.e5! fxe5 (1...f5 2.Th4=) 2.a6