

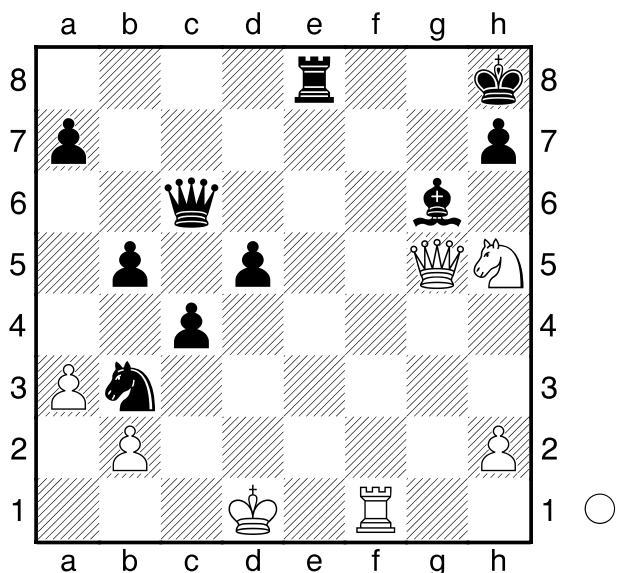
□ Rabovszky

■ Kalmar

Aggtelek

[Husemann,D]

2002



Was soll Weiß am Zuge nun machen?

1.De5+! Txe5 2.Tf8#

1-0

□ Pingitzer

■ Jusic

Stockerau

[Husemann,D]

1992

(Diagramm)

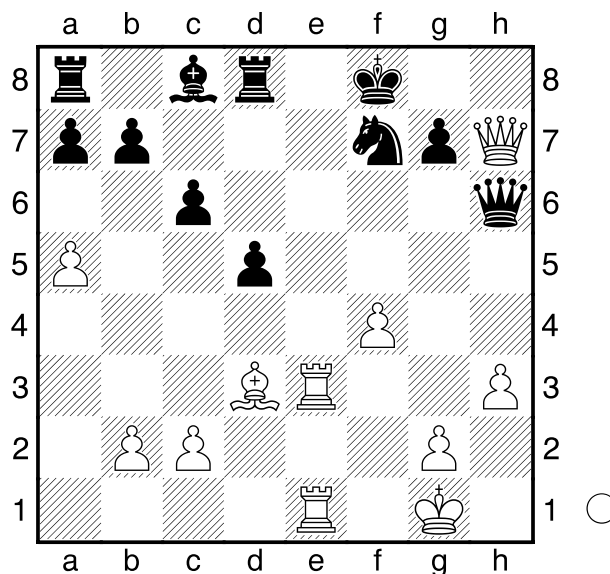
Wie kann Weiß am Zuge gewinnen?

1.Dg8+!

[1.Te8+ Zugumstellung]

1...Kxg8 2.Te8+ Txe8 3.Txe8#

1-0



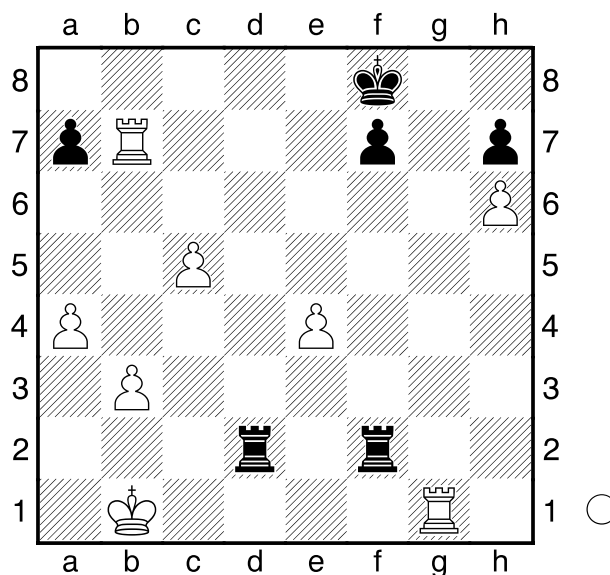
□ Garancovsky

■ Gerbery

Slowakei

[Husemann,D]

2005



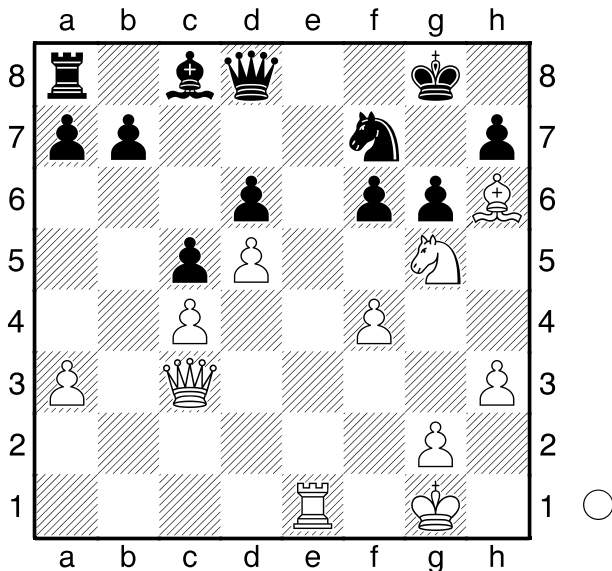
Was soll Weiß am Zuge nun machen?

1.Tg8+! Kxg8 2.Tb8+ Td8 3.Txd8#

1-0

□ Noroozi
 ■ Ryahi
 Teheran
 [Husemann,D]

2005



Was sollte Weiß am Zuge nun spielen?

1.Dxf6! Sxh6
 [1...Dxf6 2.Te8#]
 [1...Sxg5 2.Dg7#]
 [1...Df8 2.Lxf8 Kxf8 3.Dxf7#]
2.Dxd8+ Kg7 3.Te7+ Sf7
 [3...Kf6 4.Tf7#]
4.Txf7+ Kh6 5.Txh7#
1-0

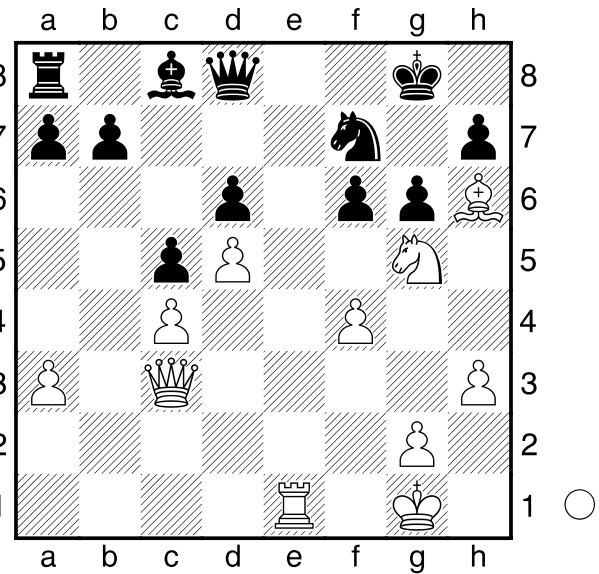
□ Noroozi
 ■ Ryahi
 Teheran
 [Husemann,D]

2005

(Diagramm)

Was sollte Weiß am Zuge nun spielen?

1.Dxf6! Sxh6
 [1...Dxf6 2.Te8#]
 [1...Sxg5 2.Dg7#]



[1...Df8 2.Lxf8 Kxf8 3.Dxf7#]
2.Dxd8+ Kg7 3.Te7+ Sf7
 [3...Kf6 4.Tf7#]
4.Txf7+ Kh6 5.Txh7#
1-0

A41

□ Beck,Julian
 ■ Hoffmann,Thiemo
 Br. Jugendpokal (11) 22.03.2007
 [Husemann,D]

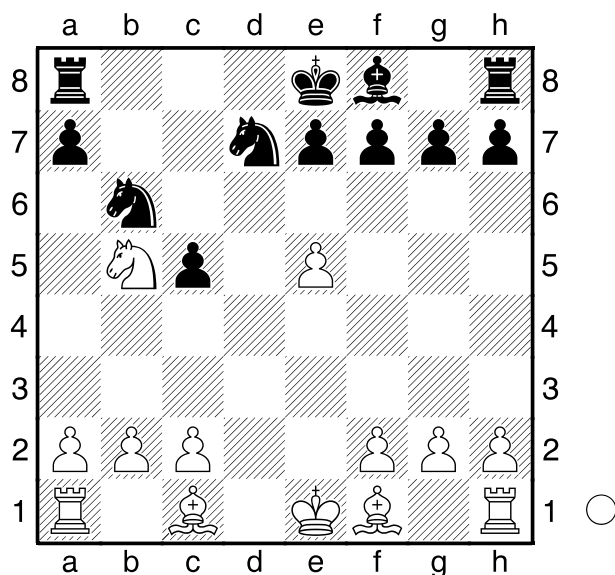
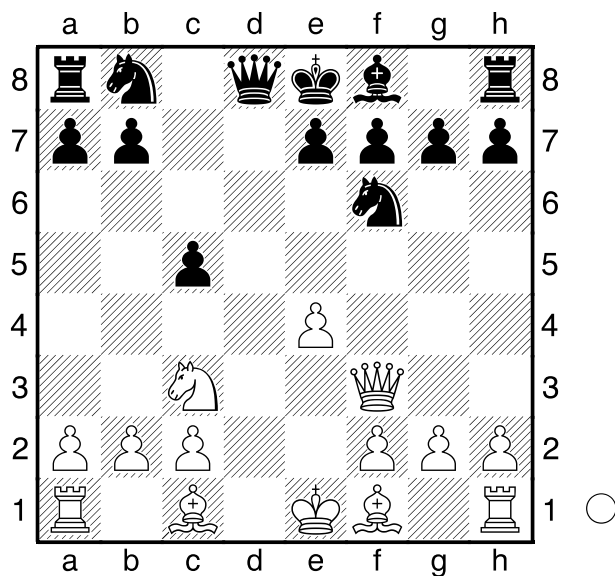
1.d4 d6 2.e4 Sf6 3.Sc3 Lg4 4.Sf3
c5 5.dxc5 Lxf3 6.Dxf3 dxc5

(Diagramm)

Weiß am Zuge. **7.e5 Sfd7 8.Dxb7**
Sb6 9.Sb5 Dd7 10.Dxd7+ S8xd7

(Diagramm)

Weiß am Zuge. **11.Sc7+ Kd8 12.Sxa8**
Sxa8 13.Lc4 Sxe5 14.b3 Sb6
15.Lb2 Sexc4 16.bxc4 Sxc4
17.0-0-0+ Kc7 18.The1 Sxb2
19.Kxb2 g6 20.c3 Lg7 21.Txe7+
Kc6 22.Txf7 Tb8+ 23.Kc2 Le5
24.Txh7 Tf8 25.f3 Kb5 26.h3 Kc4



**27.Th4+ Tf4 28.Txf4+ Lxf4 29.g4
 Le5 30.Td3 a5 31.a4 Lf6 32.f4 g5
 33.fxg5 Lxg5 34.Tg3 Lf4 35.Tf3 Le5
 36.h4 Kd5 37.g5 Ke4 38.Th3 Kf5
 39.h5 Kxg5 40.h6 Kg4 41.Th1 c4
 42.h7 Lh8 43.Tg1+ Kf4 44.Tg8 Lf6
 45.h8D Lxh8 46.Txh8 Ke5 47.Th5+
 Ke4 48.Txa5 Ke3 49.Td5 Ke4
 50.Td8 Ke3 51.a5 Ke2
 1-0**