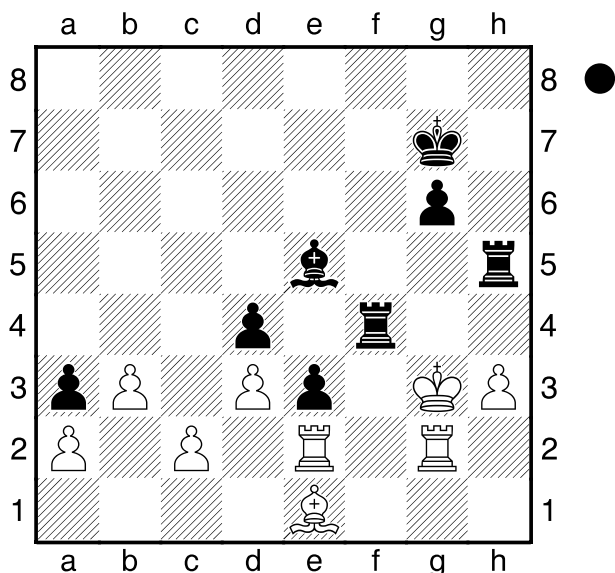


Player
 Golubka
 London
 [Husemann,D]

2012



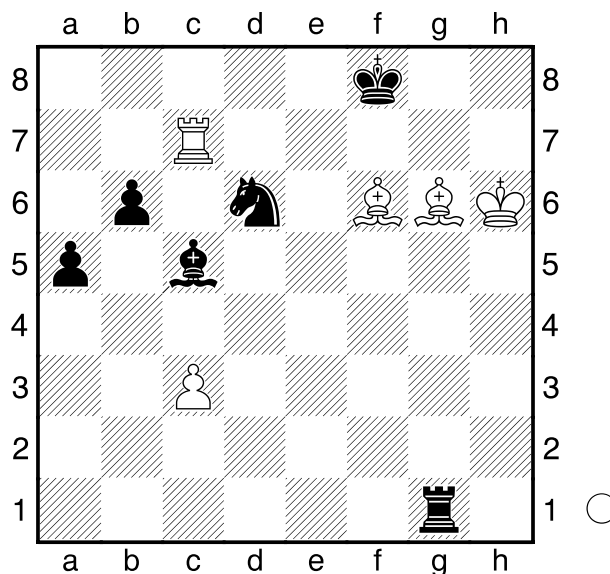
Wie setzt Schwarz am Zuge Matt?
 1...Tfh4+ 2.Kf3 Tf5#
0-1

Djurkovic
 Tratar
 Bosnjaci
 [Husemann,D]

2009

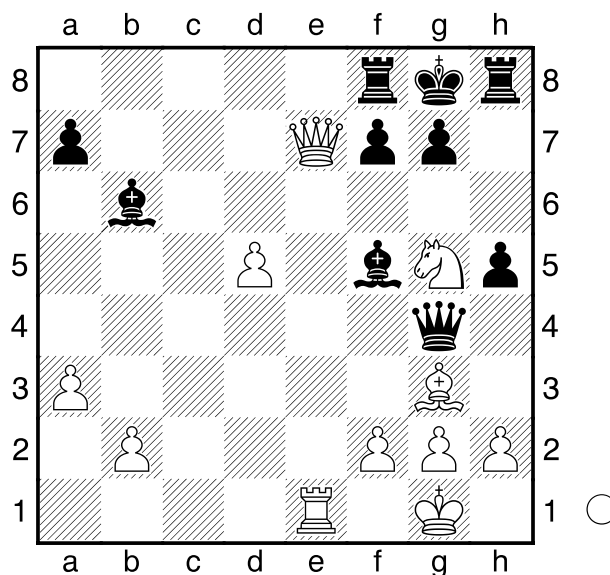
(Diagramm)

Wie gewinnt Weiß am Zuge?
 1.Lg7+ Kg8 2.Lh7#
1-0



Mastrovasilis
 Stavrakakis
 Thessaloniki
 [Husemann,D]

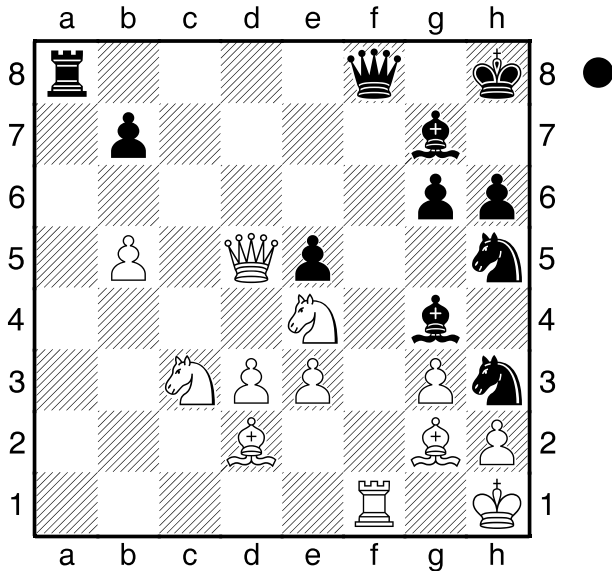
2001



Wie gewinnt Weiß am Zuge nun?
 1.Dxf8+! Kxf8 2.Ld6+ Kg8 3.Te8#
1-0

Adla
 Goasdoue
 Frankreich
 [Husemann,D]

2003



Wie geht es für Schwarz am Zuge nun weiter?

1...Dxf1+! 2.Lxf1 Lf3+ 3.Lg2 Ta1+
 4.Sd1 Txd1+ 5.Le1 Txe1#
0-1

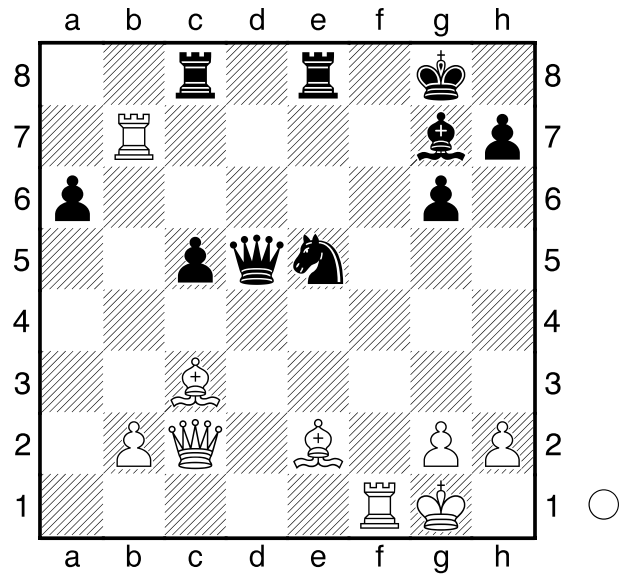
Taimanow
 N. N.
 Simultan
 [Husemann, D]

1964

(Diagramm)

Wie soll Weiß am Zuge hier fortsetzen?

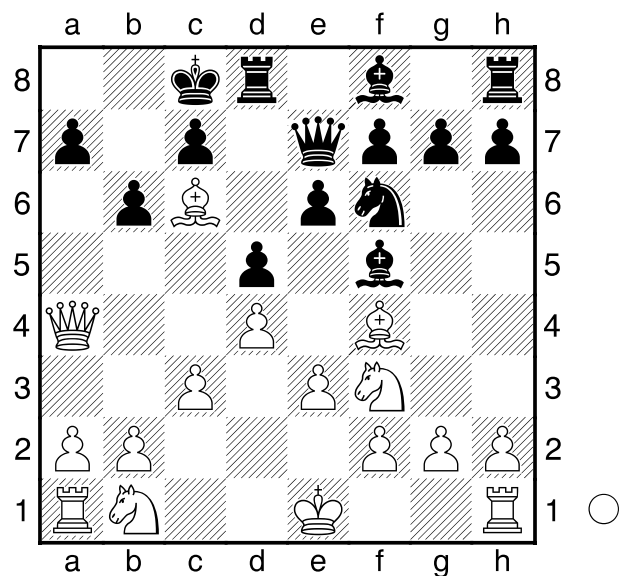
1.Lc4! Dxc4 2.Txg7+! Kh8
 [2...Kxg7 3.Lxe5+ Txe5 4.Dxc4]
3.Lxe5 Dxc2 4.Tf8+! Txf8 5.Txg6+ Tf6 6.Lxf6#
1-0



D02
1078

Klingebiel,Felix
 Diekmann,Jonas
 U20 VK SF PB 2000 II-Br.II (82804).2007
 [Husemann,D]

1.d4 d5 2.Sf3 Sc6 3.Lf4 Lf5 4.c3 e6 5.e3 Sf6 6.Db3 b6 7.Da4 Dd7 8.Lb5 0-0-0 9.Lxc6 De7



Weiß am Zuge.
10.Da6+ Kb8 11.Db7#
1-0

