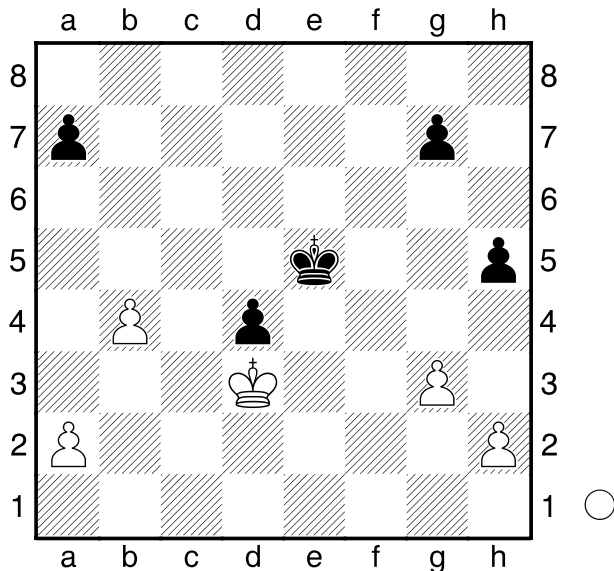


□ Balogh,C
 ■ Khenkin,I
 Bundesliga
 [Husemann,D]

2013



Analysiere diese Endspielstellung.

1.a3!

[1.a4? Kd5 2.b5 (2.a5 a6-+)
 2...Kc5-+]

[1.h4? war die Partiefortsetzung, die
 verlor: Kd5

**A) 2.a4 g6 3.b5 (3.a5 a6-+)
 3...Kc5-+ ;**

B) 2.a3 Ke5 und hier gab Weiß
 bereits auf. 3.a4 Kd5 4.a5 (4.b5
 Kc5-+) 4...a6 5.b5 axb5 6.a6
 Kc6]

1...Kd5

[1...g5? 2.a4 g4 3.a5 Kd5 4.b5+-]

2.a4 Ke5 3.a5 Kd5

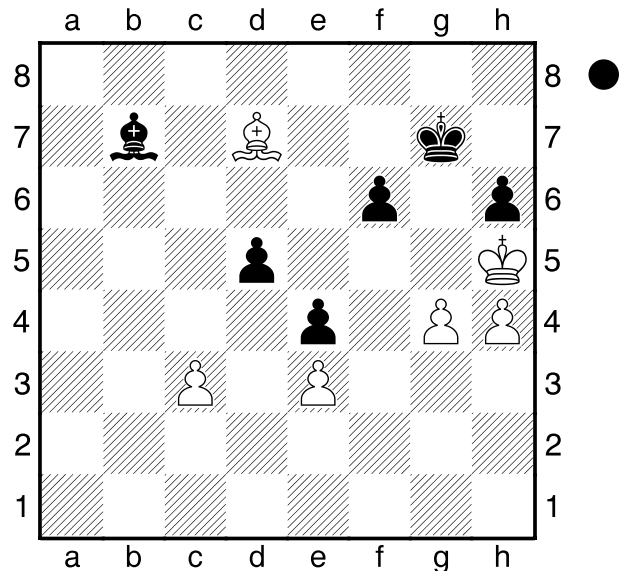
[3...a6? 4.b5!+-]

4.b5 Kc5 5.b6 axb6 6.axb6 Kxb6

7.Kxd4 Kc7 8.Ke5+-

□ Villiers
 ■ Whitehead
 London
 [Husemann,D]

2012



Analysiere diese Endspieltstellung.

1...La6! 2.Le6

[2.Lf5 Lc4 3.Le6 f5 4.Lxf5 d4!-+]
 [2.g5 Le2+ 3.Lg4 Lf3!]

2...Lb5

[2...Le2 3.Lf5 Lb5 4.g5 Le2+ 5.Lg4
 Lf3!]

**3.g5 Le2+ 4.Lg4 Lf3 5.gxf6+ Kxf6
 6.Kxh6 Lxg4 7.Kh7 Lf5+**

□ Carlsen,M
 ■ Wang Hao
 Stavanger
 [Husemann,D]

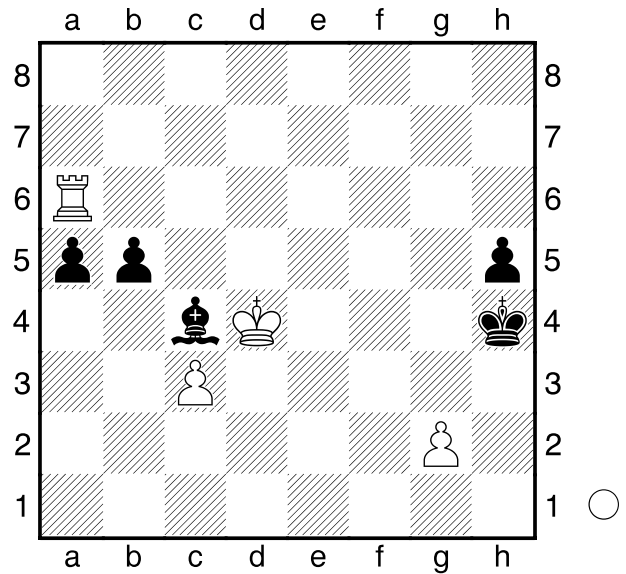
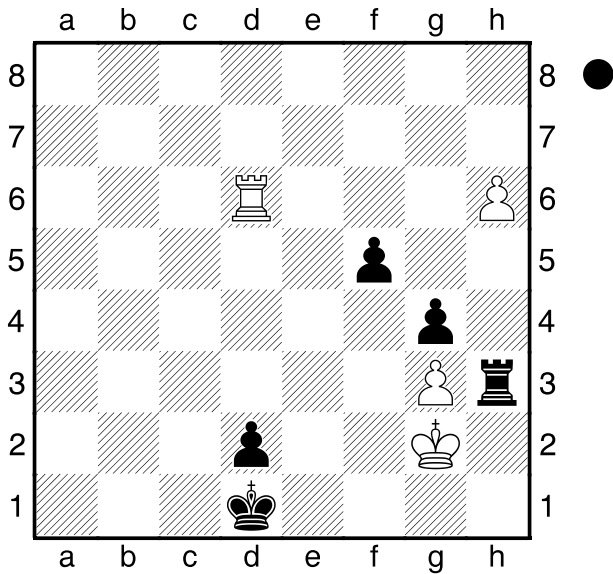
2013

(Diagramm)

Analysiere diese Endspielstellung.

1...f4!

[1...Ke2 2.Te6+ Kd3 3.Td6+ Kc3
 4.Tc6+ Kb3 5.Td6 f4 6.Txd2 f3+



7.Kf2 Txh6 8.Td4 Tg6 9.Ke3]
2.gxf4
 [2.Kf2 Txg3 3.h7 Tf3+ 4.Kg2 Th3
 5.Td7 f3+ 6.Kf2 Th2+ 7.Kg3 Tg2+
 8.Kf4 f2 9.h8D f1D+ 10.Ke5 Ke1
 11.Dh4+ g3+-]
2...Ke2 3.Te6+ Te3 4.Txe3+
 [4.Td6 d1D 5.Txd1 Kxd1 6.f5 Th3
 7.Kf2 Kd2+-]
4...Kxe3 5.h7 d1D 6.h8D Df3+
 [6...De2+ 7.Kg1 Df2+ 8.Kh1 Df1+
 9.Kh2 g3+-+]
7.Kg1
 [7.Kh2 g3+ 8.Kh3 (8.Kg1 Df2+
 9.Kh1 Df1#) 8...Dh1+-+]
7...Df2+ 8.Kh1 Df1+ 9.Kh2 g3+
10.Kxg3 Dg1+ 11.Kh4 Dh2+
0-1

1...a4 2.Ke3 a3 3.Kf4 a2 4.Tg3!
 [4.g3+? Kh3 5.Ta6 Lb3 6.Ta3 Kg2
 7.Kg5 Kxg3 8.Kxh5+-]
4...Le6 5.Th3+! Lxh3 6.g3#
1-0

□ Moldojarow
 ■ Samochanow
 Fernschach
 [Husemann,D]

1974

Analysiere dieses Endspiel.

1.Tg6!
 [1.Txa5 Kg3 2.Ta6 Kxg2 3.Th6
 Le2 4.Ke3 Lg4 5.Kf4 Kf2]