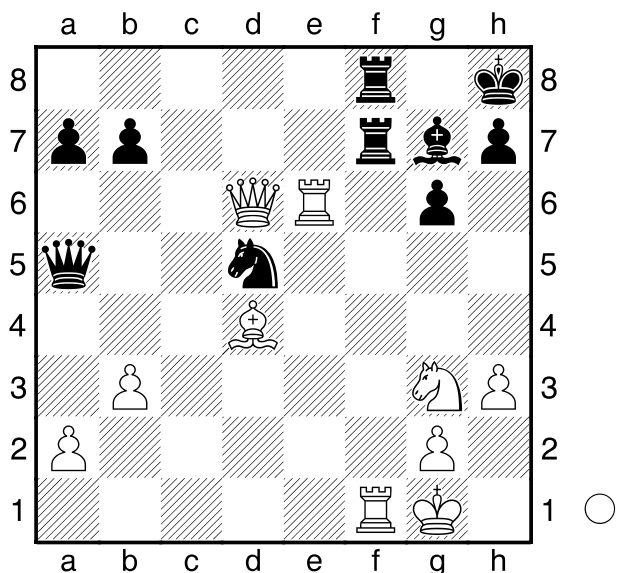


□ Jenni
 ■ Bücken

Internet
 [Husemann,D]

2008



Wie geht es für Weiß am Zuge nun weiter?

1.Dxf8+! Txf8 2.Txf8#
 1-0

□ Reilhac
 ■ Beudaert

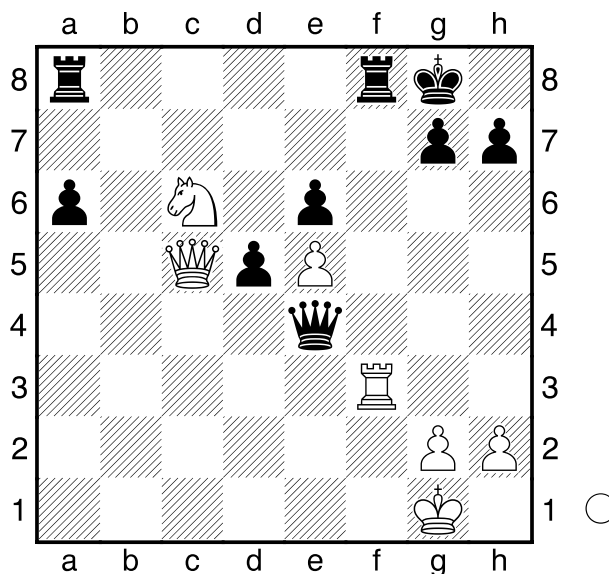
Frankreich
 [Husemann,D]

2007

(Diagramm)

Was sollte Weiß am Zuge nun machen?

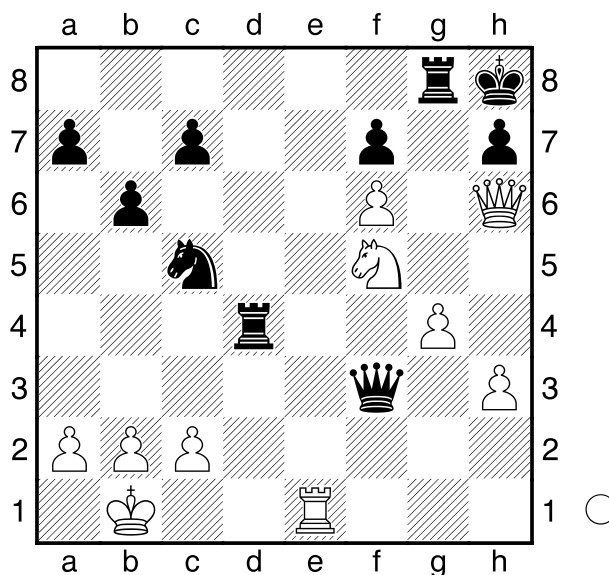
1.Dxf8+! Txf8 2.Se7+ Kh8 3.Txf8#
 1-0



□ Degraeve
 ■ Arnold

Frankreich
 [Husemann,D]

2001

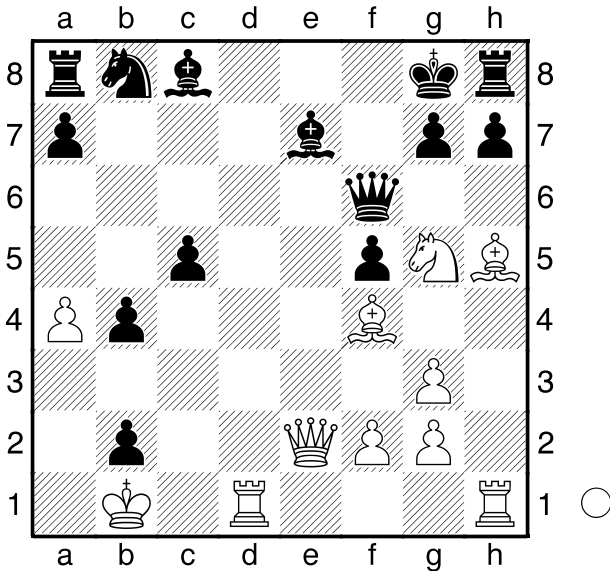


Was soll Weiß am Zuge angesichts eines Minusturms machen?

1.Dg7+! Txf8 2.fxf7+ Kg8 3.Te8#
 1-0

□ Svane,R
 ■ Geske,J
 Bundesliga
 [Husemann,D]

2013



Wie gewinnt Weiß am Zuge?

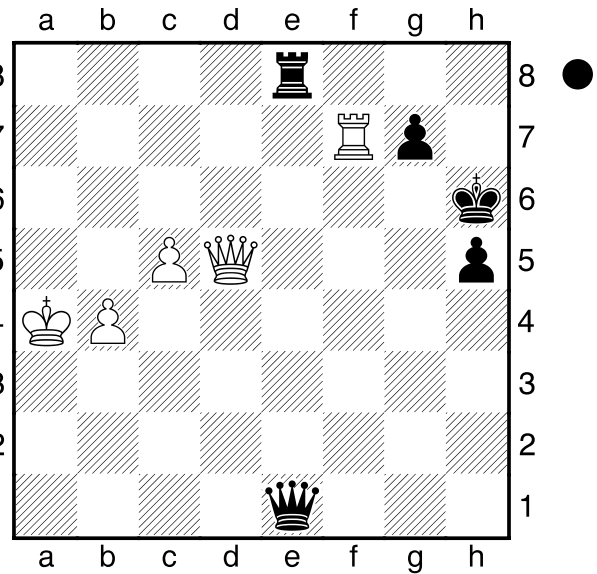
- 1.Td8+! Lf8**
 [1...Df8 2.Lf7#]
 [1...Lxd8 2.De8+ Df8 3.Lf7#]
- 2.Txf8+ Dxf8**
 [2...Kxf8 3.De8#]
- 3.Dc4+ Le6**
 [3...Df7 4.Dxf7#]
- 4.Dxe6+ Df7 5.Dxf7#**
1-0

□ Djurhuus
 ■ Agdestein
 Bergen
 [Husemann,D]

2009

(Diagramm)

Was kann Schwarz am Zuge nun machen?
1...Ta8+ 2.Kb3



- [2.Kb5 De2+ 3.Kb6 Ta6+ 4.Kc7 De8 und die Drohung Ta7 entscheidet.]
- [2.Dxa8 Da1+ 3.Kb5 Dxa8--]
- 2...Db1+**
 [2...De3+? 3.Kc2 De2+ 4.Dd2+=]
- 3.Kc4**
 [3.Kc3 Ta3+ 4.Kd4 Td3+--]
- 3...Da2+ 4.Kd4 Td8!**
0-1

□ Liu,Yi-Nan Julian **C01 1497**
 ■ Gohlke,Philipp **1531**
 U20 NRW Münster-Br. (6. Br.) 29.04.2007
 [Husemann,D]

- 1.e4 e6 2.d4 d5 3.Sc3 Lb4 4.exd5 exd5 5.Ld3 Sc6 6.a3 Le7 7.Sge2 Sf6 8.Lf4 0-0 9.Dd2 Le6 10.0-0-0 Sa5 11.Sb5 b6 12.Sxc7 Tc8 13.Sxe6**

(Diagramm)

Schwarz am Zuge.
Sb3+ 14.Kb1 Sxd2+ 15.Txd2 fxe6 16.La6 Se4
0-1

