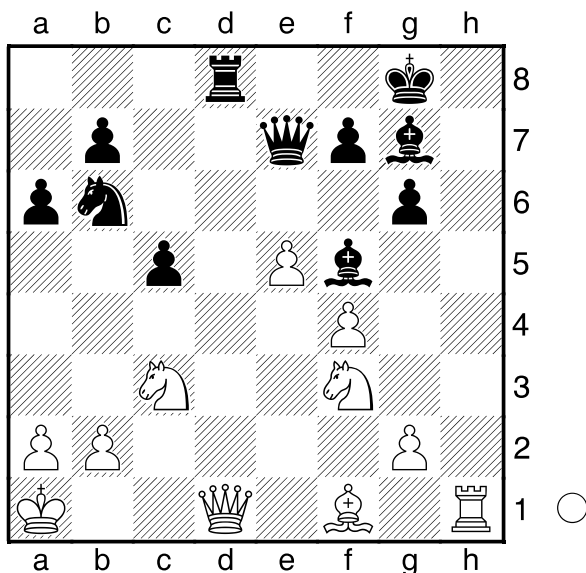


**Gelfand,B**  
 **Caruana,F**  
 Zuerich Chess Challenge (2) 24.02.2013  
*[Husemann,D]*

**1.d4 Sf6 2.c4 g6 3.f3 d5 4.cxd5  
 Sxd5 5.e4 Sb6 6.Sc3 Lg7 7.Le3  
 0-0 8.Dd2 Sc6 9.0-0-0 Dd6 10.Sb5  
 Dd7 11.Kb1 Td8 12.d5 a6 13.Sc3  
 De8 14.De1 Sa7 15.h4 Sb5 16.Sge2  
 Sc4 17.Ld4 Sxd4 18.Sxd4 Sb6  
 19.h5 e6 20.hxg6 hxg6 21.f4 De7  
 22.Sf3 exd5 23.e5 d4 24.Sxd4 c5  
 25.Sf3 Lf5+ 26.Ka1 Txd1+ 27.Dxd1  
 Td8**



Weiß am Zuge. **28.De1?!**  
 [ 28.Dc1 ]  
 [ 28.Db3 Dc7 29.Le2 Lf8 ( 29...c4  
 30.Db4 Lf8 31.Da5 Dc5 32.Dxc5  
 Lxc5 33.Sg5= ) 30.Sg5 c4  
 31.Sce4! ]  
**28...Dd7! 29.Le2**  
 [ 29.Sg5?! Dd2 ]  
**29...Sd5 30.Sxd5 Dxd5 31.Dc1 Le6  
 32.b3 Dc6 33.Td1 Txd1 34.Dxd1  
 De4 35.g3 Lf5?**  
 [ 35...Lg4! 36.Sd4 ( 36.Kb2 b5  
 37.Df1 Lf8 38.Dd1 De3 39.Df1 c4 )  
 36...cxd4 37.Lxg4 d3 38.Lf3 Dd4+

39.Kb1 Lf8 ]  
**36.Lc4! Lh6!**  
 [ 36...De3? 37.Dd8+ Lf8 38.Lxf7+!  
 Kxf7 39.Sg5+ Kg8 40.Dd5+ Kh8  
 41.Dh1++- ]  
**37.Ld5 De3 38.Dd2 Dxd2 39.Sxd2  
 g5 40.Lxb7 gxf4** Hier endete die  
 Partie, die wie folgt weitergehen  
 könnte: **41.gxf4 Lxf4 42.Sc4 a5  
 43.Kb2 Le6 44.Kc3**  
 1/2-1/2