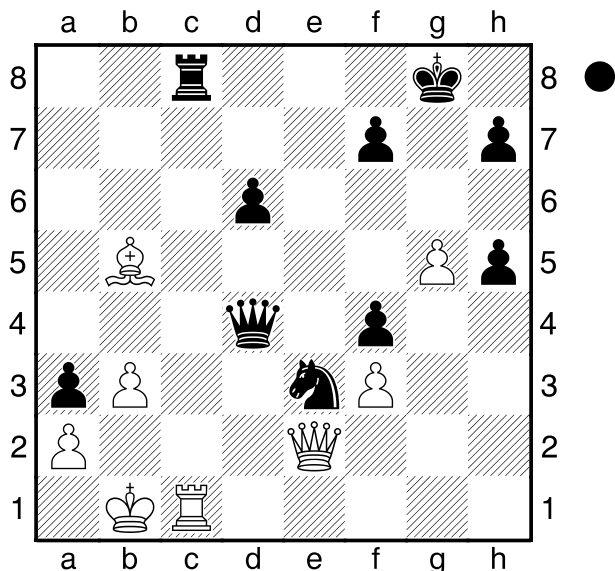


□ Lanka  
 ■ Nemet

Rostock  
 [Husemann,D]

2002



Wie beendet Schwarz am Zuge nun die Partie?

1...Da1+! 2.Kxa1 Txc1#

0-1

□ Bojkovic  
 ■ Scekic

Serbien  
 [Husemann,D]

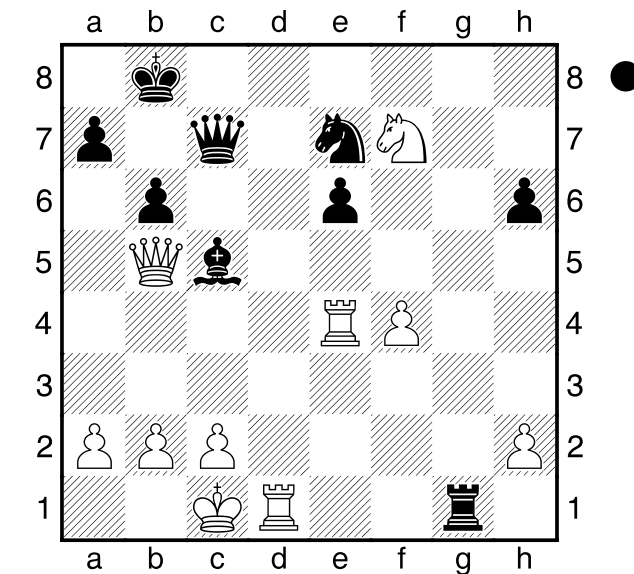
2000

(Diagramm)

Wie gewinnt Schwarz am Zuge nun?

1...Dxf4+! 2.Txf4 Le3+ 3.Kb1 Txd1#

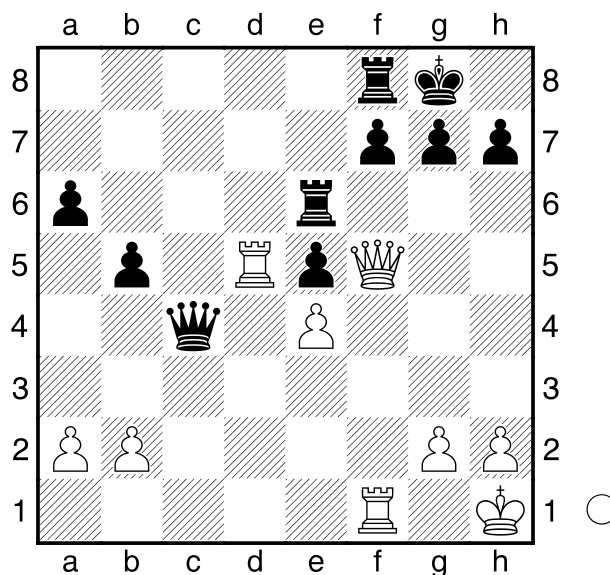
0-1



□ Bourne  
 ■ Parkin

Großbritannien  
 [Husemann,D]

2001



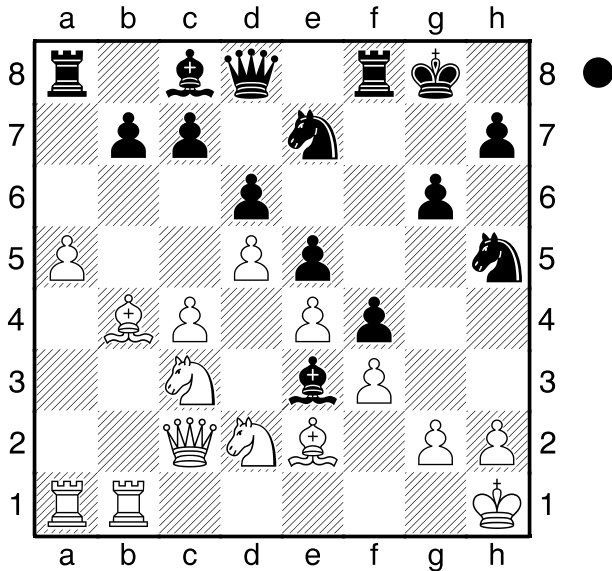
Was kann Weiß am Zuge nun tun?

1.Dxf7+! Txf7 2.Td8+ Tf8 3.Tdxf8#

1-0

**Fedorow,A**  
 **Ozolin,M**  
 Kazan  
 [Husemann,D]

2013



Wie geht es für Schwarz am Zuge weiter?

1...Sg3+! 2.hxg3 Sf5! 3.exf5 Dg5  
 4.Sf1 Dh6+ 5.Sh2 fxc3  
**0-1**

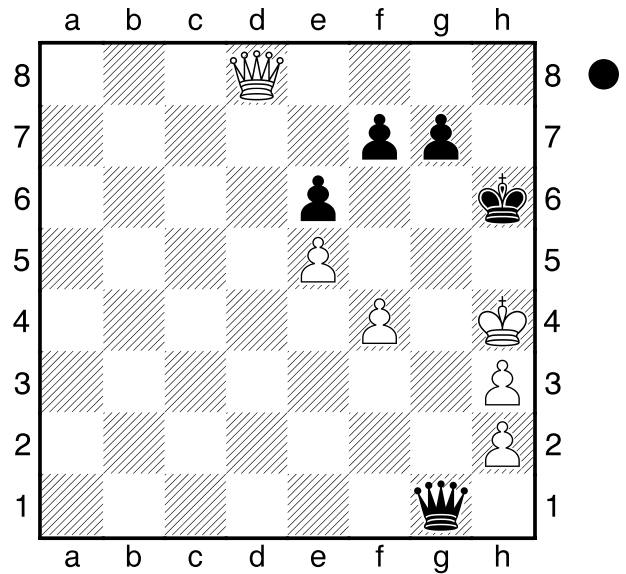
**Janowski**  
 **Rosenberg**  
 Klaipeda  
 [Husemann,D]

1998

(Diagramm)

Wie geht es für Schwarz am Zuge nun weiter?

1...Df2+ 2.Kg4 f5+! 3.exf6 Dg2+  
 4.Kh4 g5+ 5.fxg5+ Dxg5#  
**0-1**



**B01**

**Niemeyer,Sarah**

**1433**

**Adomeit,Lena**

**1134**

NRW U16w (6)

13.04.2007

[Husemann,D]

**1.e4 d5 2.exd5 Dxd5 3.Sc3 Da5**  
**4.Sf3 Lg4 5.h3 Lh5 6.d4 Sf6 7.Ld2**  
**Sbd7 8.Lc4 e6 9.Sd5 Lxf3 10.Dxf3**  
**Da4**

(Diagramm)

Weiß am Zuge.

**11.Sxc7+ Ke7 12.b3 Dc6**  
**1-0**

