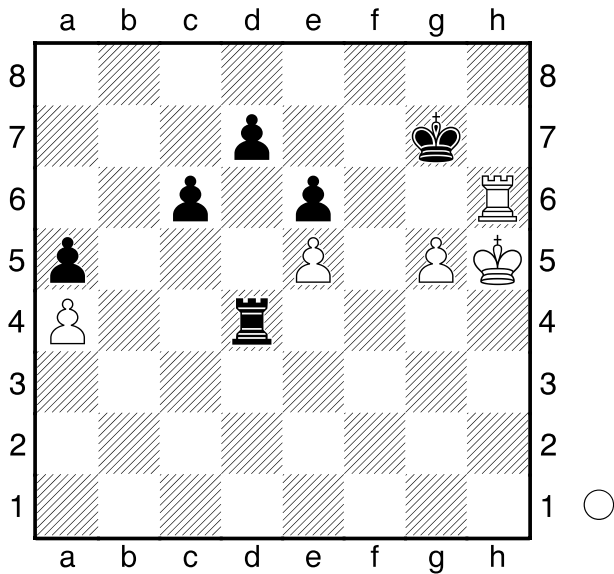


Semjonow
 Pjerewoskin
 Chanty Mansijsk
 [Husemann,D]

2013



Weiß am Zuge.

1.g6?
 [1...Tg6+ Kf7 2.Tf6+ Kg7= (2...Ke8?
 3.g6!+-)]
1...Th4+! 2.Kxh4 Kxh6
0-1

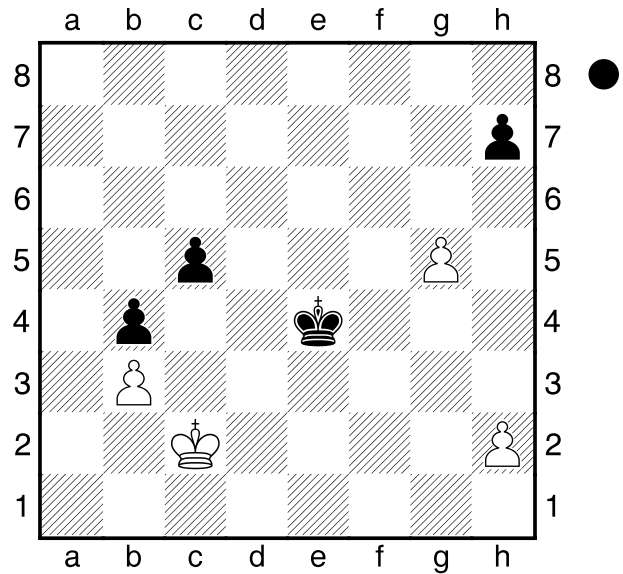
Titz
 Alavi
 Opatja
 [Husemann,D]

2013

(Diagramm)

Schwarz am Zuge.
 Was ist von den Zügen Kd4, Kf5, Kf4
 und Ke3 zu halten?

1...Kd4?
 [1...Kf5! 2.Kd3! (2.h4? Kg4 3.Kd3
 Kxh4 4.Kc4 Kxg5 5.Kxc5 h5+-)
 2...Kxg5 3.Kc4 Kh4 4.Kxc5 Kh3
 5.Kxb4 Kxh2 6.Kc4 h5 7.b4 h4



8.b5 h3 9.b6 Kg2 10.b7 h2 11.b8D
h1D=]
 [1...Kf4!=]
 [1...Ke3 2.h3!= (2.h4?)]

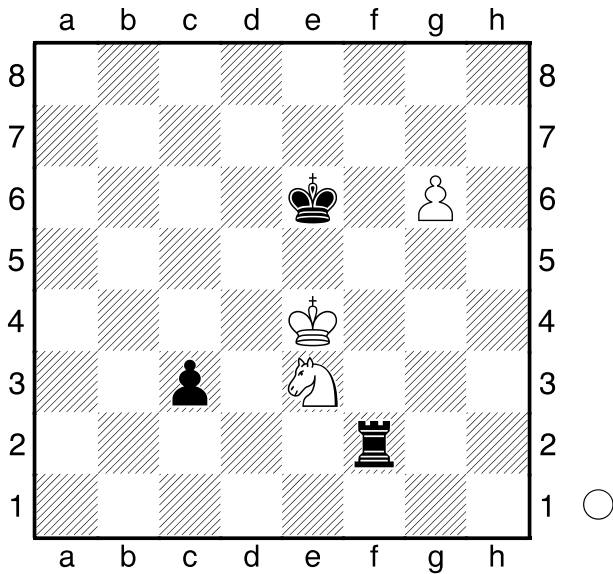
2.h4 c4
 [2...Ke4 3.h5 Kf5 4.g6 hxg6
 5.hxg6 Kxg6 6.Kd3 Kf5 7.Kc4 Ke6
 8.Kxc5+-]
3.bxc4 Kxc4 4.h5

Morosewitsch,A
 van Kampen,R
 [Husemann,D]

(Diagramm)

Gibt es für Weiß am Zuge eine
 Rettung?

1.g7 Kf7 2.Kd3 Tf3 3.Kd4 Kxg7
4.Sc2 Kf6 5.Kc4 Ke5 6.Sb4 Ke4
7.Sc2 Th3
 [7...Kf4 8.Sb4 Kg3 9.Kb3 Kf2
 10.Sd5 Ke2 11.Kc2=]
8.Sb4 Tg3 9.Sc2 Tf3 10.Sb4 Kf5
11.Sc2 Kg4 12.Sd4 Tg3 13.Kb3 Te3
14.Sb5 Kf4 15.Sxc3 Ke5 16.Kc4
Th3 17.Sb5 Th8 18.Sc3 Tc8+

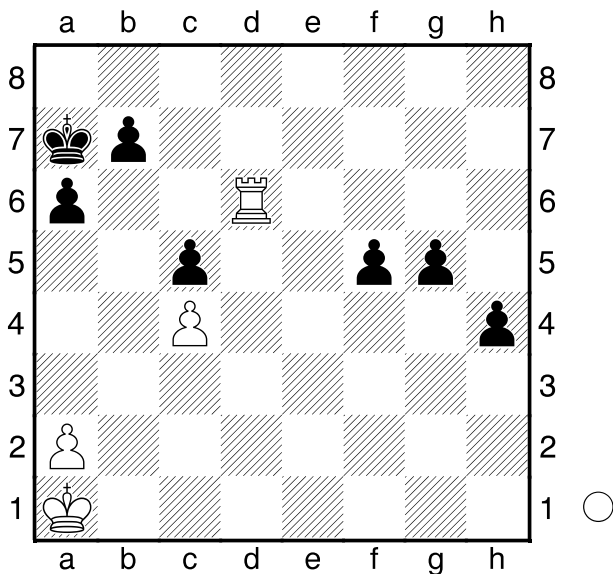


19.Kd3 Td8+ 20.Kc4 Td4+ 21.Kc5 Td3 22.Kc4 Txc3+ 23.Kxc3

□ Moser,E
 ■ Renner,C
 Augsburg 2014
 [Husemann,D]

1...f4

[1...b5 2.Th5 g4 3.Txh4 g3 4.Th7+ Kb6 5.Tg7 f4 6.Tg4+-]
2.Tg6! f3 3.Txg5 h3 4.Tg1! b5
5.Kb2 Kb6 6.Kc3 Ka5 7.Kd3 f2
8.Tb1 Ka4 9.Ke2 h2 10.Th1 Ka3
11.Txh2 Kxa2 12.Txf2 b4 13.Kd3+ Kb3
14.Tf5 a5 15.Txc5 a4 16.Ta5 a3 17.c5 Ka2
 [17...Kb2 18.c6 a2 19.c7+-]
18.c6 b3 19.c7 b2 20.c8D b1D+
21.Dc2+ Db2 22.Tb5 Dxc2+ 23.Kxc2 Ka1
24.Tb1+ Ka2 25.Tb3 Ka1 26.Txa3#



Weiß am Zuge.

1.Th6!

[1.Tg6? g4 2.Kb2 g3 3.Kc3 f4 4.Kd3 h3+-]
 [1.Tf6? h3 2.Txf5 h2 3.Tf1 g4+-]