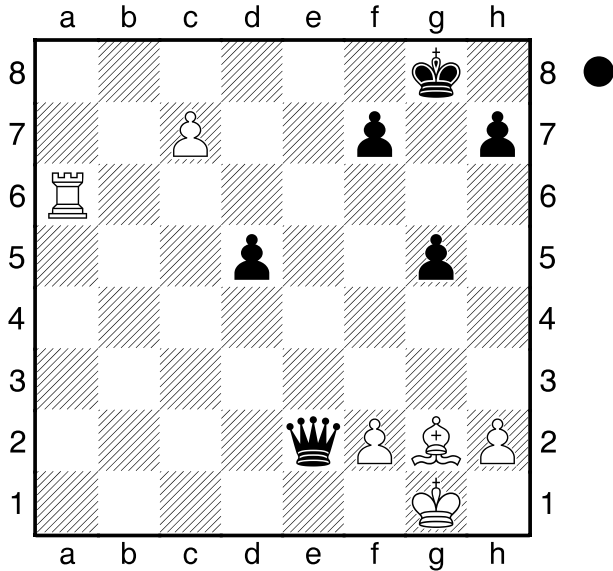


Brady,S
 Collins,S
 Brannigan Cup
 [Husemann,D]

2012



Was soll Schwarz am Zuge machen?

- 1...Dxa6**
 [1...Dd1+ 2.Lf1 Dg4+ 3.Lg2 Dd1+]
2.Lh3 g4!
 [2...f5? 3.Lxf5+-]
3.Lxg4 f5! 4.Lxf5 Da1+ 5.Kg2 Dg7+ 0-1

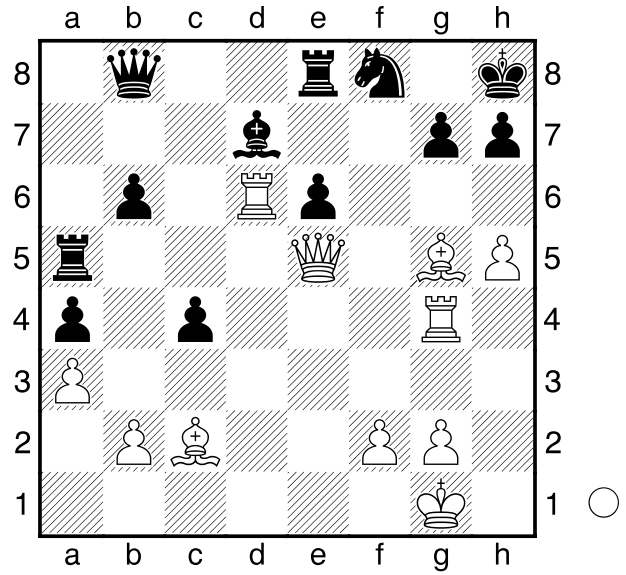
Rombaldoni,A
 Schneider,S
 Stockholm Rilton
 [Husemann,D]

2012

(Diagramm)

Weiß am Zuge.

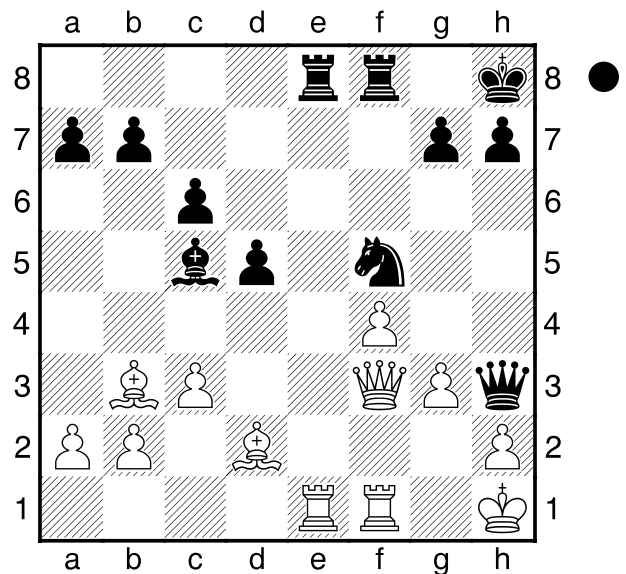
- 1.Lh6! Txe5 2.Lxg7+ Kg8 3.Lxe5+ Sg6**
 [3...Kf7 4.Tg7#]
4.hxg6 hxg6
 [4...h6 5.Th4 Dxd6 6.Lxd6+-]
5.Txg6+ Kf8 6.Tf6+ Kg8



- [6...Ke7 7.Th6]
7.Lh7+! Kxh7 8.Txd7+ Kg8 9.Tg6+ Kf8 10.Lg7+ Kg8 11.Th6

Draskovic,L
 Romanischin,O
 Porto San Giorgio
 [Husemann]

2013



Schwarz am Zuge.

- 1...Te2! 2.Txe2**
 [2.Dxe2 Sxg3#]
2...Sxg3+ 3.Dxg3 Dxf1+ 4.Dg1

Dxg1#
0-1

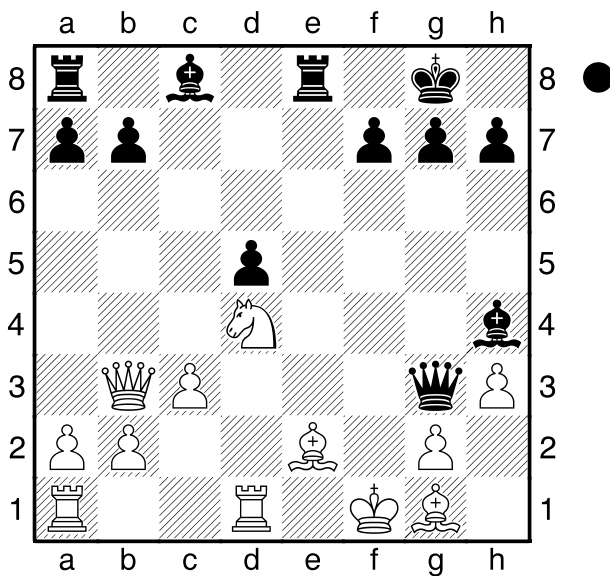
□ **Persowski**

■ **Sobura**

Polen

1985

[Husemann,D]



Wie sollte Schwarz am Zuge fortfahren?

1...Txe2! 2.Kxe2

[2.Sxe2 Df3+! 3.gxf3 Lxh3#]

2...Dxg2+ 3.Lf2

[3.Ke3 Lg5+ 4.Kd3 De4#]

[3.Kd3 De4+ 4.Kd2 Lg5+ 5.Le3

Lxe3+ 6.Ke2 Lxd4+--]

3...Dxf2+ 4.Kd3 Lf5+ 5.Sxf5 Dxf5+

6.Kd2 Lg5+ 7.Ke1 Te8#

0-1