

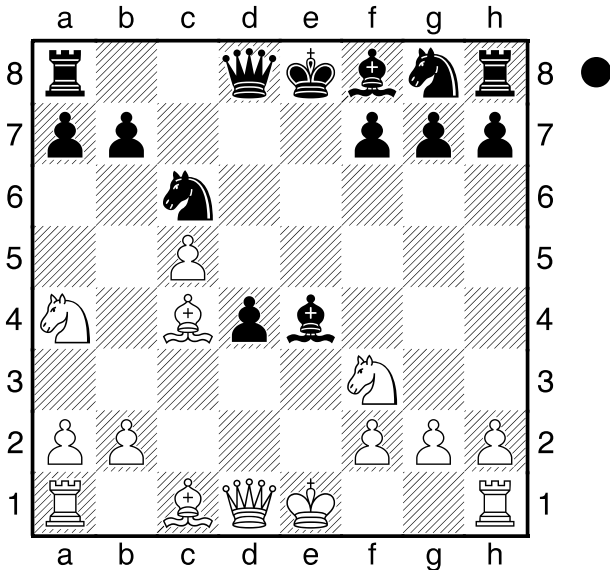
□ Blübaum,M
 ■ Berelowitsch
 Bundesliga
 [Husemann]

D32 De3?

2014

1.d4 d5 2.c4 e6 3.Sc3 c5 4.cxd5
 exd5 5.Sf3 Sc6 6.dxc5 d4 7.Sa4
 Lf5 8.e4 Lxe4 9.Lc4

[21...Dh5+ 22.Kg1 Sg4 23.Df3
 Dh2+ 24.Kf1 Dh4 25.Ke2 Tfe8+
 26.Kd2 Sh2 27.Dd3 Tc8]
 22.Df3 Txd4 23.Dxe3 Sg4+ 24.Kg1
 Sxe3 25.Lxd4 Sc2 26.Lb2 Sxa1
 27.Lxa1 Td8 28.Lc3 f6 29.Kf2 Td3
 30.Le1 g5 31.Ke2 Td7 32.Ld2 h5
 33.fxc5 fxc5 34.Sc5 Te7+ 35.Kd3
 g4 36.Lg5 Tf7 37.Lh4 Kh7 38.Se6
 Kg6 39.Ke4 Tf1 40.Sf4+ Kh6 41.Kf5
 Ta1 42.a4 Tb1 43.Le7 Txb3 44.Lf8+
 Kh7 45.Sxh5 Kg8 46.Lc5 a5 47.Kg6
 g3 48.Sf6+ Kh8 49.Sg4 Td3 50.Se5
 Td2 51.Sf7+ Kg8 52.Le7 Tf2
 53.Sh6+ Kh8 54.Lf6+ Txf6+ 55.Kxf6



Schwarz am Zuge.

Ld5

[9...Lxf3 10.Dxf3 De7+ 11.Kd1 Df6
 12.Te1+ (12.Dd5 Sge7 13.Te1
 Dxf2∞ Rogozenko,T-Walker,J 2014)
 12...Le7 13.Ld5±]
 [9...b5 10.Lxb5 (10.cxb6 Lb4+
 11.Ld2 Lxd2+ 12.Sxd2 Lxg2
 13.De2+ Sge7 14.Tg1 Ld5 15.Lxd5
 Dxd5 16.Txg7 Da5 17.b3 Kf8
 18.Tg1 axb6∞) 10...Da5+ 11.Sd2
 Lxg2 12.De2+ Kd7 13.Dg4+ Kc7
 14.Dxg2 Dxb5 15.Dg3+ Kb7
 16.Db3 Dxb3 17.axb3 Sb4 18.Kd1]
 10.De2+ Le7 11.0-0 Sf6 12.Td1
 Lxf3 13.Dxf3 0-0 14.Lb5 Da5
 15.Lxc6 bxc6 16.b3 Lxc5 17.Lb2
 Tad8 18.Dxc6 Ld6 19.Txd4!?
 [19.g3 Le5 (19...Sg4 20.Txd4 Dh5
 21.Dg2±) 20.f4 Ld6 21.Lxd4±]
 19...Lxh2+ 20.Kxh2 De5+ 21.f4