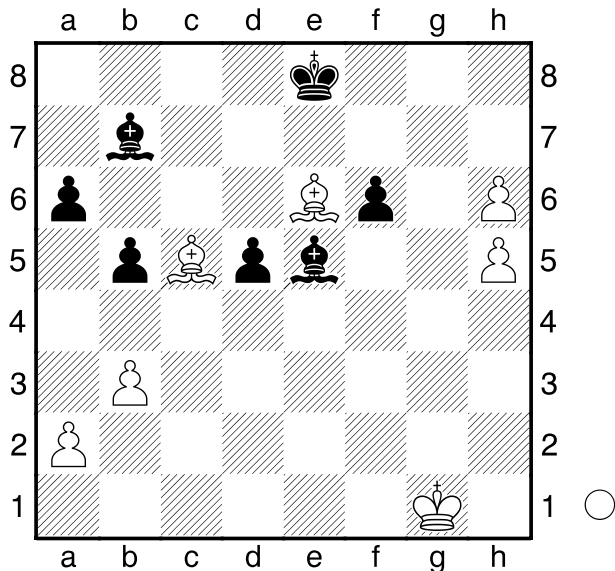


□ Gligoric,S
 ■ Nikitin,A
 Elista
 [Husemann,D]

2002



Kann Weiß am Zuge hier gewinnen?

1.Lf5!

[1.h7? f5 2.Lxf5 Kf7 3.h6 Lh8
 4.Kf2 d4±]

1...Kf7 2.h7 Kg7 3.h6+

[3.Lf8+]

3...Kh8 4.Lf8

□ Jacobsen,B
 ■ Pedersen,H
 Teplice
 [Husemann,D]

2013

(Diagramm)

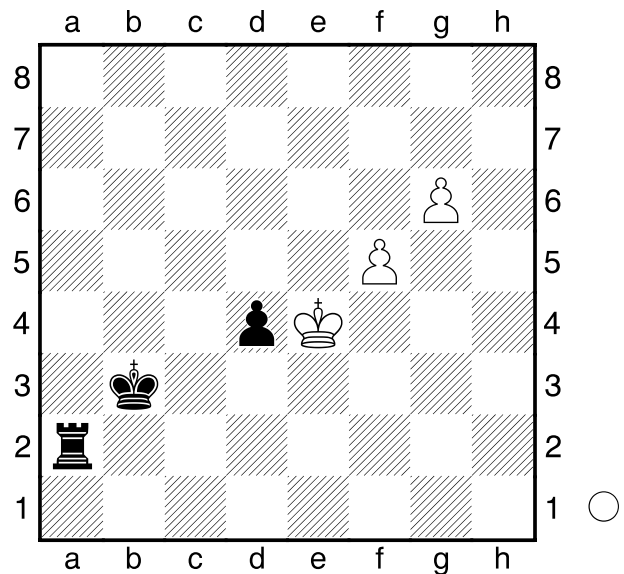
Wie sollte Weiß am Zuge fortfahren?

1.Kxd4?

[1.f6! Kc3 2.g7 Tg2 3.f7 Txg7
 4.f8D+-]

[1.g7! Tg2 2.f6 Kc3 mit Übergang
 in die vorige Variante]

1...Tg2 2.Ke5 Kc4 3.f6 Tg5+!



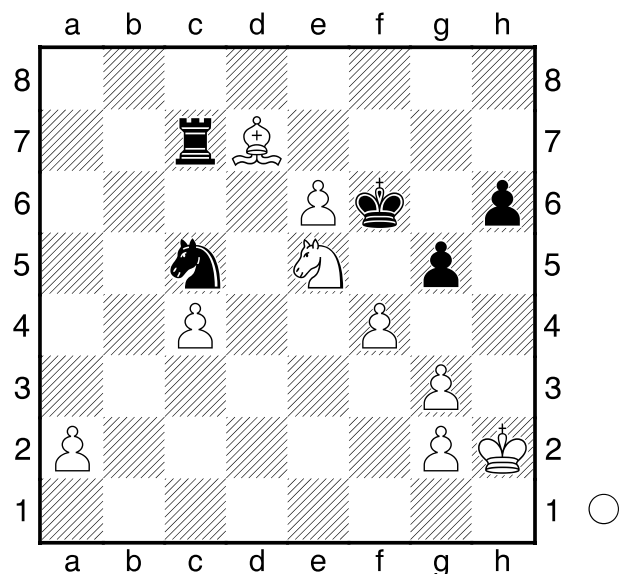
[3...Txb6 4.f7 Tg5+!=]

4.Ke6 Txb6

1/2-1/2

□ Khenkin,I
 ■ Caruana,F
 Dortmund
 [Husemann,D]

2013



Weiß am Zuge.

Analysiere diese Stellung.

1.Sg4+? war die Partiefortsetzung, die einen halben Punkt verschenkte.

[1.f5! h5 (1...Kxf5 2.e7+- ;
 1...Kxe5 2.e7+-) 2.g4 h4 (2...hxg4
 3.Sxg4+ Ke7 4.f6+-) 3.a4 Tb7
 (3...Se4 4.Sc6 Sf2 5.g3 Sxg4+
 6.Kh3 Sf2+ 7.Kg2 Sg4 8.gxh4
 Se3+ 9.Kf2 Sxc4 10.hxg5+ Kxg5
 11.a5 Tb7 12.a6 Tb2+ 13.Ke1 Kf6
 14.e7 Sd6 15.a7 Ta2 16.Le6 Ta3
 17.Kd2 Se8 18.Kc2 Sd6 19.Kb2
 Ta6 20.Kb3 Ta1 21.Kb4+-) 4.Lc6
 Tb1 (4...Kxe5 5.Lxb7 Sxb7 6.a5)
 5.Sd7+ Sxd7 6.exd7 Tb8 7.a5 Ke7
 8.a6 Kd6 9.a7 Th8 10.a8D+-]

1...Ke7 2.Sxh6

[2.f5 Sxd7 3.exd7 Kxd7 4.Se3 Kd6
 5.Kh3 Ta7=]

2...Sxe6 3.Lxe6 Kxe6 4.fxg5 Tc5**5.g4 Txg5 6.Kg3**

1/2-1/2

□	Moor,O	2381
■	Braun,P	2225
	Neckar Open Deizisau	2013
	[Husemann,D]	

(Diagramm)

Schwarz am Zuge gab hier die Partie auf.

Was ist davon zu halten?

1...Te6! hält remis: 2.Kf8

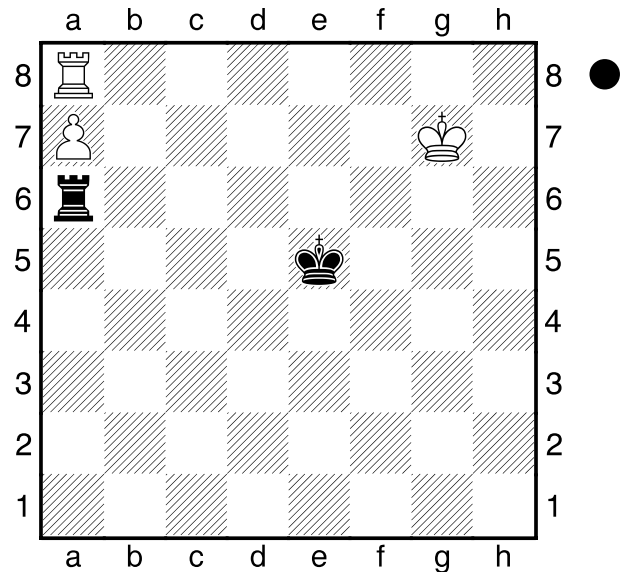
[2.Tf8 Te7+ 3.Tf7 Te8 4.Td7 Ke6
 5.Tb7 (5.Td1 Te7+ 6.Kg6 Txa7=)
 5...Kd6 6.Kf7 Ta8

nebst Annäherung des Königs und Eroberung des a-Bauern.]

[2.Kf7 Tf6+ 3.Ke8 Ta6 4.Kd7 Kd5
 5.Kc7 Kc5 6.Kb7 Tb6+ 7.Kc7 Tc6+
 8.Kd7 Td6+ (8...Kb6!?) 9.Ke7
 Tc6=]

2...Tf6+ 3.Kg7 Te6 4.Kh7 Te7+

[4...Ke4? 5.Kg8 Ke5 6.Tf8+-]



**5.Kg6 Te6+ 6.Kg5 Te7 7.Kg4 Ke4
 8.Kh3 Ke5 9.Kg3 Ke6 10.Kf4 Tf7+
 11.Ke4 Kf6! 12.Kd4 Kf5 13.Kc5 Kf4
 14.Kb6 Tf6+ 15.Kb5 Tf7**