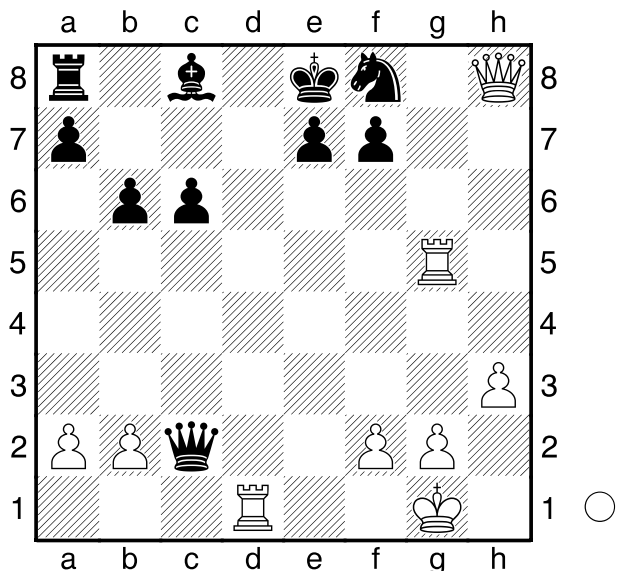


Horvarth,T  
 Vesin  
 Genf  
 [Husemann,D]

2003



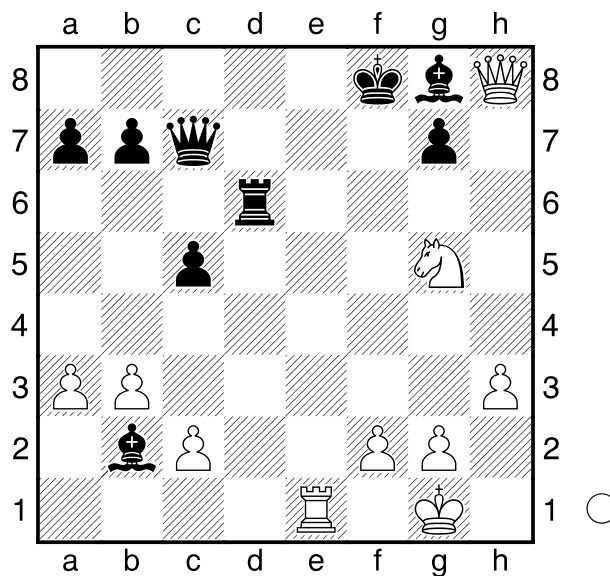
Wie gewinnt Weiß am Züge?  
 1.Dxf8+! Kxf8 2.Td8#  
**1-0**

Keprt  
 Holeska  
 Tschechien  
 [Husemann,D]

2005

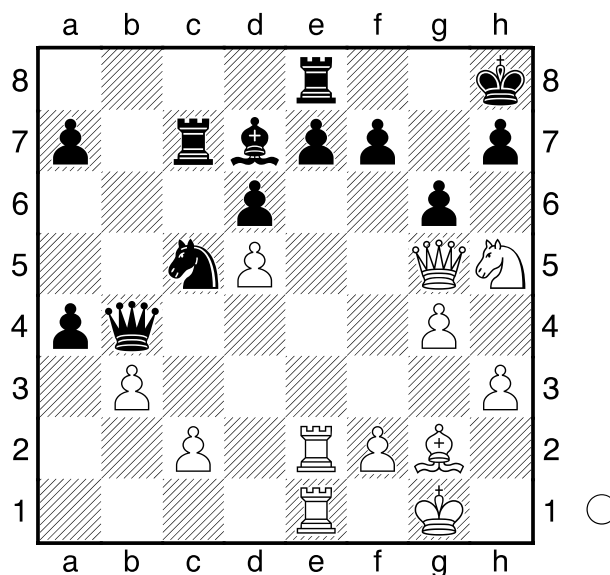
(Diagramm)

Was macht Weiß am Züge nun?  
 1.Dxg8+! Kxg8 2.Te8#  
**1-0**



Hess,C  
 Marten,G  
 Bad Homburg  
 [Husemann,D]

2009



Wie sollte Weiß am Züge nun  
 fortfahren?  
**1.Df6+! exf6**  
 [ 1...Kg8 2.Dg7# ]  
**2.Txe8+ Lxe8 3.Txe8#**  
**1-0**

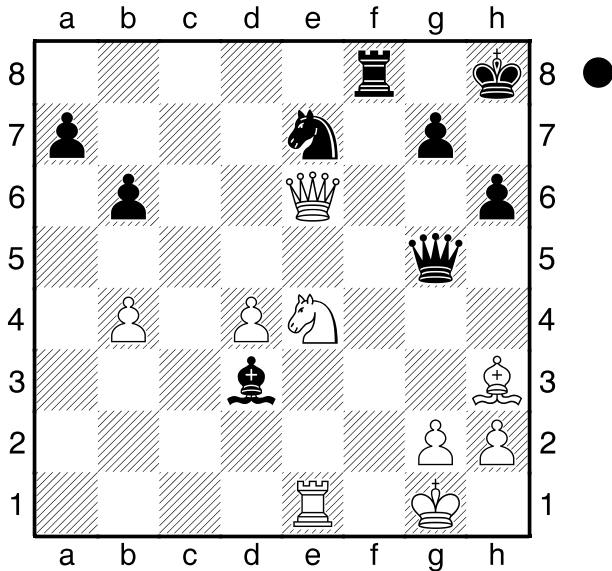
□ Kirszenberg

■ Autran

Calvi

[Husemann,D]

2005



Was soll Schwarz am Zuge nun machen?

**1...De3+! 2.Sf2**

[ 2.Kh1 Dxe1# ]

[ 2.Txe3 Tf1# ]

**2...Dxf2+ 3.Kh1 Df1+ 4.Txf1 Txf1#**  
**0-1**

□ Petenyi,T

■ Jirka,J

Tschechien

[Husemann,D]

2013

(Diagramm)

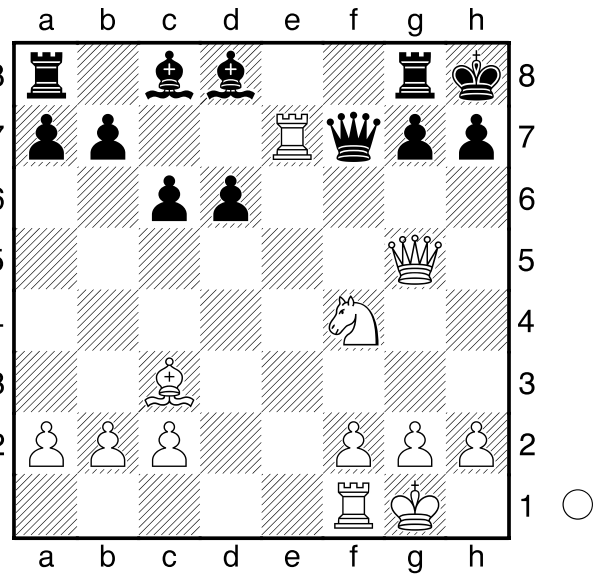
Was sollte Weiß am Zuge nun unternehmen?

**1.Sg6+! Dxc6**

[ 1...hxc6 2.Dh6# ( 2.Dh4# ) ]

**2.Txc7! Dxc5**

[ 2...Lxc5 3.Txc6+ Tg7 4.Txc5 ]



[ 2...Txc7 3.Dxc6+ Dc8 4.Dxc8# ]  
[ 2...Dxc7 3.Lxc7+ Txc7 4.Dxc6+ Tg8 5.Df6+ Tg7 6.Te1 Lg4 7.Te7 Tag8 8.Txb7 ]

**3.Txc5+ Tg7 4.Lxc7+ Kg8 5.Lf6+ Kf7 6.Lxd8**  
**1-0**

C42

□ Kallweit,Felix

■ Diekmann,Frederik

Br. Jugendpokal (10)

15.03.2007

[Husemann,D]

**1.e4 e5 2.Sf3 Sf6 3.Sc3 De7 4.Lc4 Dc5 5.d3 Sg4 6.0-0 d6 7.h3 Sf6 8.Sg5 h6 9.Sf3 g5 10.a3 g4 11.b4 Dc6**

(Diagramm)

Weiß am Zuge. **12.Lb5 Dxb5 13.Sxb5 gxf3 14.Sxc7+ Kd8 15.Sxa8 fxc2 16.Kxc2 Tg8+ 17.Kh2 h5 18.Tg1 Lg7 19.Lg5 Th8 20.Df3 b6 21.Lxf6+ Lxf6 22.Dxf6+ Ke8 23.Dxh8+ Kd7 24.Tg7 Lb7 25.Txf7+ Ke6 26.Df6#**  
**1-0**

