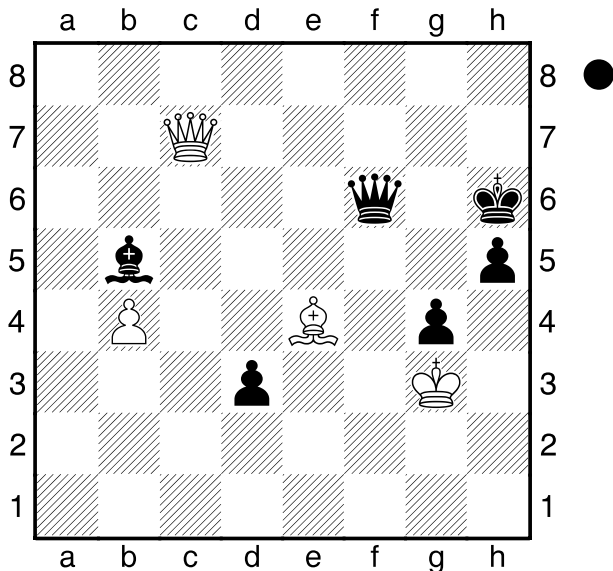


Thompson,I
 Libiszewski,F
 Rejkjavik
 [Husemann,D]

2012



Was soll Schwarz am Zuge hier machen?

- 1...h4+ 2.Kg2**
 [2.Kxg4? Ld7+! 3.Dxd7 (3.Lf5 Dxf5+ 4.Kxh4 Dh3#) 3...Dg5+ 4.Kf3 (4.Kh3 Dg3#) 4...Dg3#]
2...d2 3.Dh7+ Kg5 4.Dg8+ Kf4
5.Db8+ Kxe4 6.Db7+ Lc6

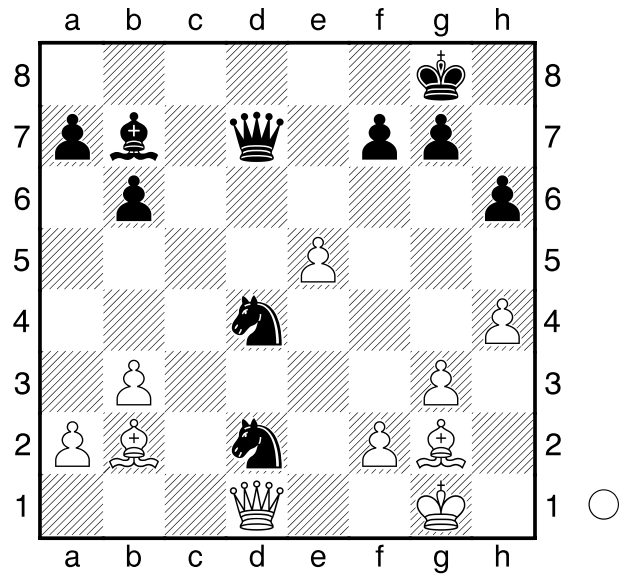
Blübaum,M
 Oberhofer,A
 DEM Saarbrücken
 [Husemann,D]

2013

(Diagramm)

Was soll Weiß am Zuge nun machen?

- 1.Lxb7?**
 [1.Dxd2? Sf3+--+]
 [1.Lxd4? Lxg2 2.Dxd2 Dh3+]
 [1.e6! fxe6 (1...Sxe6 2.Lxb7 Dxb7 3.Dxd2= ; 1...S2f3+ 2.Lxf3 Sxf3+



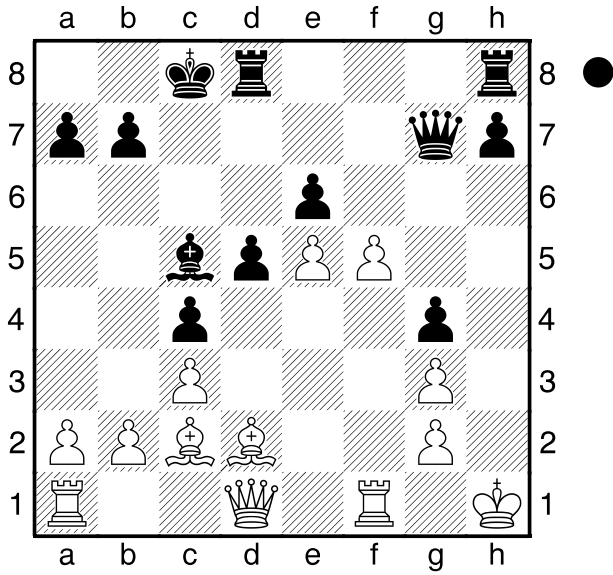
- 3.Dxf3 fxe6=) 2.Lxd4 Lxg2**
3.Dxd2=]
1...Dxb7 2.Lxd4 Sf3+ 3.Kf1 Dd5
0-1

Becher
 Brückner
 Deutschland
 [Husemann,D]

1985

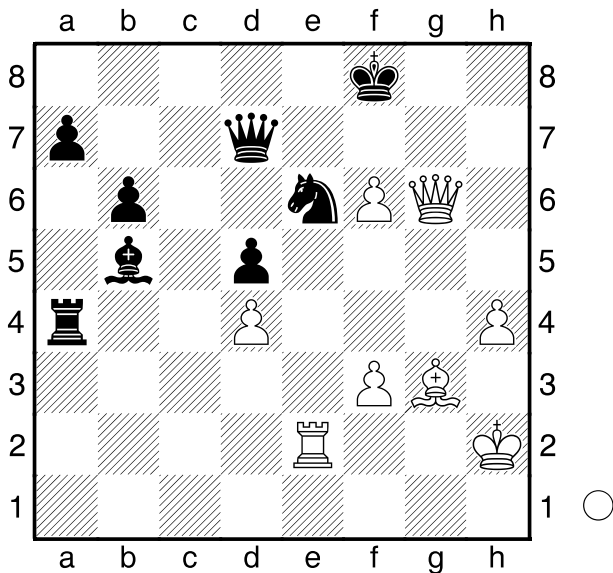
(Diagramm)

- Schwarz am Zuge.
 Wer steht hier eigentlich besser?
1...Dg6! 2.Tf2
 [2.fxg6 hxg6+ 3.Lh6 Txh6#]
2...Lxf2 3.Dg1 Lb6! 4.Tf1
 [4.fxg6 hxg6+ 5.Dh2 Txh2+ 6.Kxh2 Th8+ 7.Lh6 Txh6#]
4...Tdf8-+
0-1



Jones,G
 Hawkins,J
 Great Britain
 [Husemann,D]

2012



Wie sollte Weiß am Zuge hier fortfahren?

- 1.Lf4! droht Lh6 **Sxf4** 2.Te8+ Dxe8
- 3.Dg7#
- 1-0