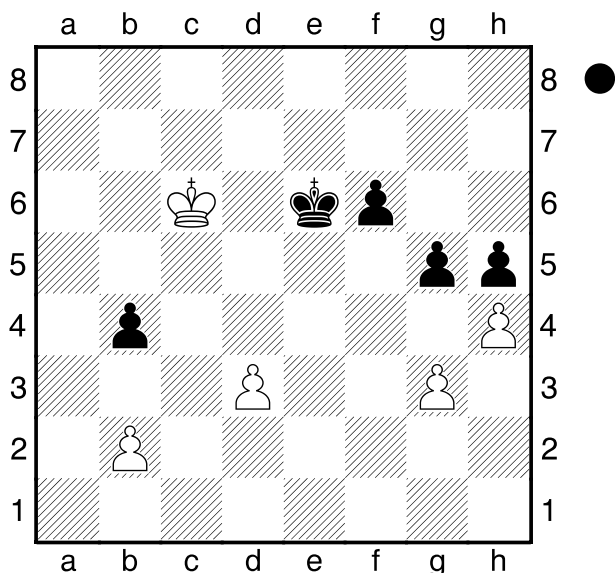


**Williams**  
 **Amin**  
 Reykjavik  
 [Husemann,D]

2013



Schwarz am Zuge.  
 Analysiere dieses Endspiel!

**1...Ke5?!**

[ 1...f5! 2.d4 f4 3.d5+ Kf5 4.d6 fxg3 5.d7 g2= ]

**2.Kc5! Ke6?**

[ 2...gxh4! 3.d4+ Ke6 4.d5+ Kd7 5.gxh4 b3! 6.d6 f5 7.Kd5 f4 8.Ke4 Kxd6 9.Kxf4 Kd5 10.Kg5 Kd4 11.Kxh5 Kd3 12.Kg5 Kc2 13.h5 Kxb2 14.h6 Kc1 15.h7 b2 16.h8D b1D= ]

**3.d4 g4 4.Kc6 Ke7 5.d5 Kd8 6.Kd6 1-0**

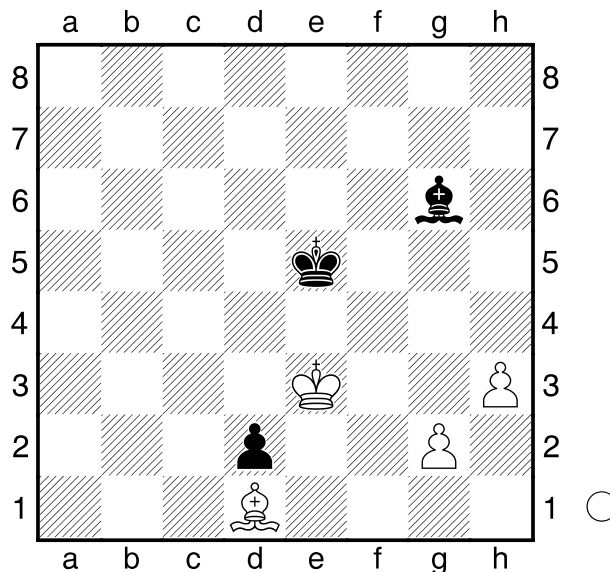
**Carlsen,M**  
 **Kramnik,W**  
 Moskau  
 [Husemann,D]

2013

Analysiere diese Endspielstellung!

**1.g3!**

[ 1.Kxd2 Kf4 2.g4 Kg3 3.Ke3



Kxh3= ]

[ 1.g4 Lf5! 2.Kxd2 Kf4 3.Kc3 Lc8 4.Kd4 Kg5 5.Ke3 Ld7 und remis, der Läufer bleibt auf den Feldern c8, d7, e6, falls Weiß Kf2 zieht, um Kg3 nebst h4 folgen zu lassen, spielt Schwarz Kh4. ]

**1...Lf5 2.h4 Le6 3.Kxd2 Ke4 4.Ke2 Lg4+ 5.Ke1 Le6 6.Kf2 Ke5 7.Ke3 Ld7 8.Lc2 Lg4 9.Lg6 Ld7 10.h5 Kf6 11.Kf4 Le6 12.Le4 Kg7**

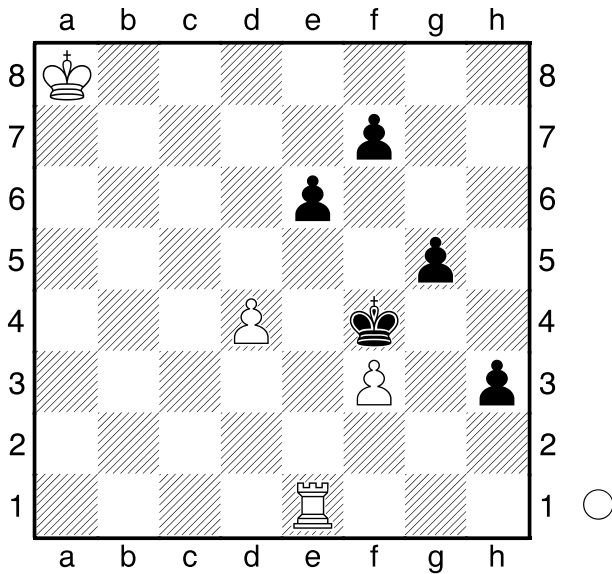
[ 12...Ld7 13.h6 ( 13.g4? Lxg4= ) 13...Lc8 14.g4 Lxg4 15.Kxg4 Kf7 16.Lh7! Kf8 17.Kg5 Kf7 18.Kf5 Kf8 19.Kf6 Ke8 20.Kg7 ]

**13.Kg5 Ld7 14.h6+ Kh8 15.Kf4 Le6 16.Lf5 Lf7 17.g4 Lh5 18.g5 Kg8 19.Le6+ Kh7 20.Kf5 Lg6+ 21.Kf6 Kh8 22.Ld7 Lh5 23.Lc6 Kh7 24.Ld5 Lg6 25.Lg8+ 1-0**

**Guseinov,G**  
 **Mamedyarov,S**  
 Schnellschach WM  
 [Husemann,D]

2013

Analysiere diese Endspielstellung!



**1.Kb7?** war die Partiefortsetzung, die schnell verlor.

[ 1.Th1!

**A)** 1...Kxf3 2.Txh3+ Ke4 3.Th5 g4 4.Tg5 f5 5.Kb7 Kxd4 6.Kc6 Ke4 7.Kd6 Kf3 ( 7...Kf4 8.Tg6 e5 9.Ke6 g3 10.Txg3 Kxg3 11.Kxf5= ) 8.Kxe6 f4 9.Kf5 g3 10.Tg4 g2 11.Txf4+ Ke3 12.Tg4= ;

**B)** 1...Kg3 2.Tg1+! ( 2.Kb7? Kg2+ )

**B1)** 2...Kh2? 3.Txg5 Kh1 4.Kb7 h2 5.Kc6 f5 6.Kd6 f4 7.Kc6 ( 7.Kxe6? Patt ) 7...e5 8.Txe5 Kg2 9.Th5 h1D 10.Txh1 Kxh1 11.d5+- ;

**B2)** 2...Kxf3 3.Txg5 h2 4.Th5 Kg2 5.Tg5+ ( 5.Kb7? f5 6.Kc6 f4+- ) 5...Kf2 6.Th5 Kg1 7.Tg5+ und Remis wegen Zugwiederholung ]

**1...Kxf3 2.Tf1+ Kg2 3.Txf7 h2 0-1**

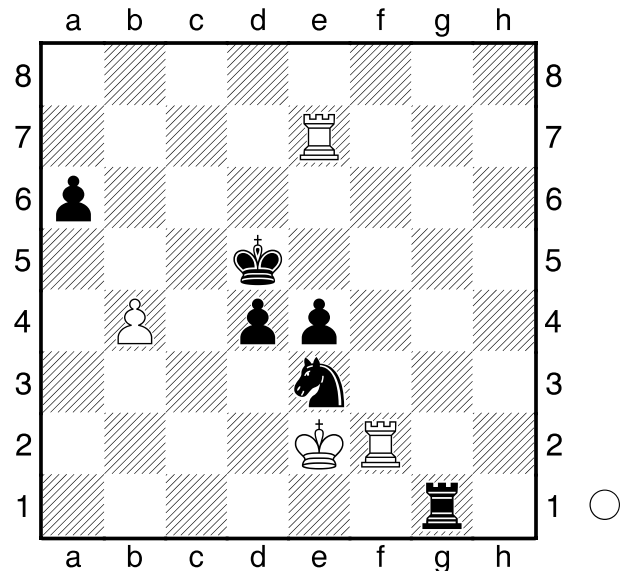
□ **Caruana,F**

■ **Dominguez,L**

Thessaloniki

2013

[Husemann,D]



Analysiere diese Stellung!

**1.Td7+?**

[ 1.Tc7?! Sg4 2.Tc5+ Ke6 3.Tf4 ( 3.Tf8 d3+ 4.Kd2 Tg2+ 5.Kc3 Tc2+ 6.Kb3 Txc5 7.bxc5 e3+- ) 3...d3+ 4.Kd2 Tg2+ 5.Kc3 Tc2+ 6.Kb3 Txc5 7.bxc5 e3+- ]

[ 1.Th2!

**A)** 1...Tg2+ 2.Txg2 Sxg2 3.Td7+ Kc4 4.Td6 Sf4+ 5.Kd1! ( 5.Ke1? e3 6.Txa6 d3 7.Kd1 Se2!+- )

5...e3 6.Txa6 d3 7.Td6 Kc3 8.Tc6+ Kxb4 9.Td6 und Schwarz kann keine Fortschritte machen ;

**B)** 1...Sg4 2.Th5+ Kc4 3.Txe4 Sf6 4.Txd4+ ( 4.Tc5+ Kxb4 5.Tee5 Sd7 6.Tg5 ) 4...Kxd4 5.Ta5= ;

**C)** 1...Sd1!?

**C1)** 2.Th5+? Kc4 3.Txe4 ( 3.Tc5+ Kxb4 ) 3...Sc3+ 4.Kf2 Sxe4+ 5.Kxg1 d3 6.Th8 Kxb4! ( 6...d2? 7.Td8 Kc3 8.Kf1 Kc2 9.Ke2 Sc3+ 10.Ke3 d1D

11.Txd1 Sxd1+ 12.Kd4=) 7.Td8  
 Kc3 8.Kg2 ( 8.Kf1 Kc2 ) 8...a5  
 9.Kf3 Sd2+ 10.Kf2 Sc4 11.Ta8  
 Kc2 12.Tc8 d2 13.Txc4+ Kd3  
 14.Tc8 d1D 15.Td8+ Kc2  
 16.Txd1 Kxd1 17.Ke3 Kc2!  
 ( 17...a4? 18.Kd3= );

**C2)** 2.Tc7!

**C2a)** 2...d3+ 3.Kd2 Sb2  
 4.Td7+ ( 4.Th5+? Kd4 5.Td7+  
 Kc4 6.Ke3 Te1+-+ ) 4...Kc4  
 5.Ke3! Kc3 ( 5...Te1+ 6.Kd2 )  
 6.Kxe4 Tg4+ 7.Kf3 Txb4  
 8.Ta7= ;

**C2b)** 2...Sc3+ 3.Kf2 Tg6=  
 ( 3...Tg5? 4.Tc5+ ) 4.Th5+ ]

**1...Kc4 2.Tc7+ Kb3 3.Th2 Tg3**  
**4.Td7 d3+ 5.Ke1 Tf3 6.Th1 Sc4**  
**7.Td4 Te3+ 8.Kf2 Te2+ 9.Kg3 Kc3**  
**10.Td8 d2**