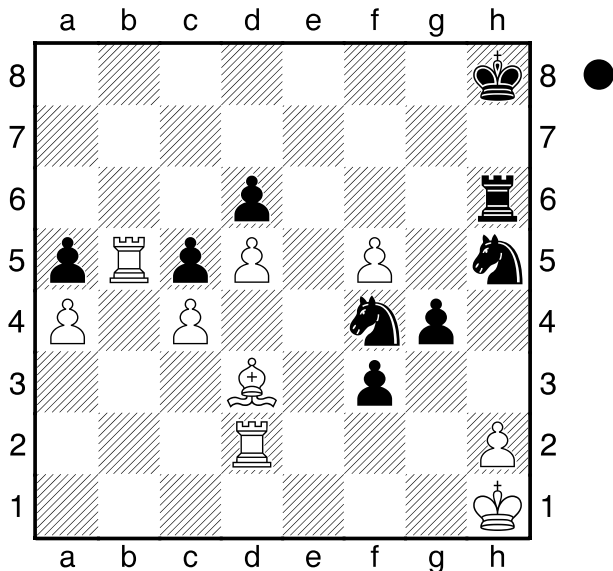


Kononenko
 Mirsojew
 Sevilla
 [Husemann,D]

2006



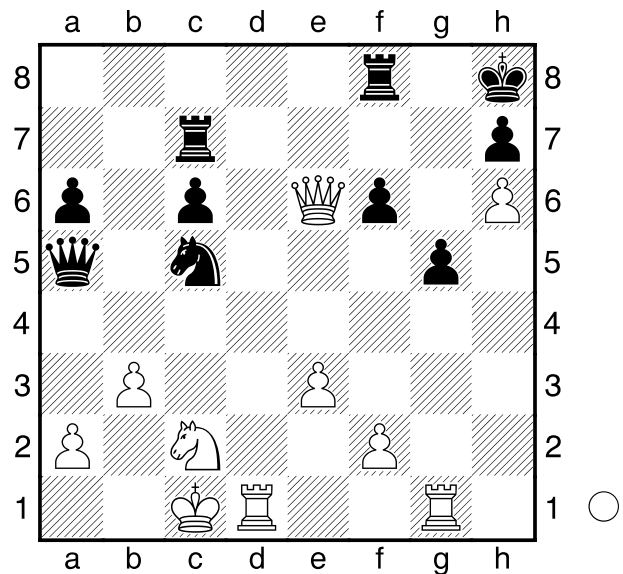
Wie gewinnt Schwarz am Zuge nun?
 1...Sg3+ 2.Kg1 Sh3#
0-1

Nisipeanu,L D
 Wolkow,S
 Bad Wiessee
 [Husemann,D]

2012

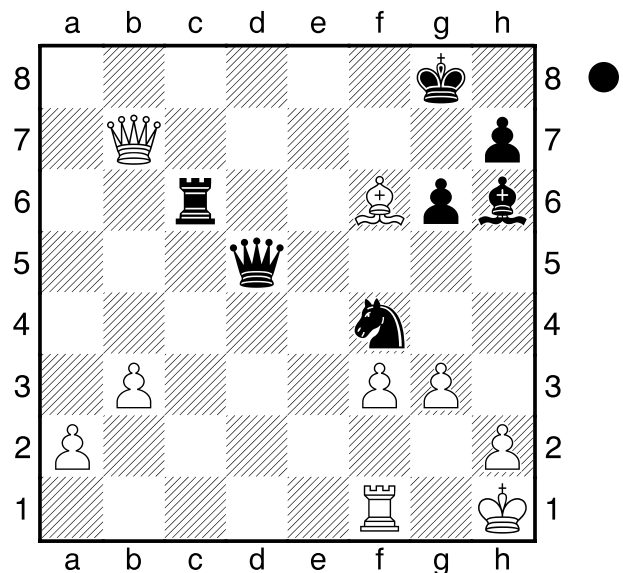
(Diagramm)

Was kann Weiß am Zuge nun
 unternehmen?
1.Dxf6+! Txf6
 [1...Kg8 2.Txg5+ Tg7 3.Dxg7#]
2.Td8+ Tf8 3.Txf8#
1-0



Loginow
 Wells
 Budapest
 [Husemann,D]

1994



Wie gewinnt Schwarz am Zuge?
1...Dxf3+ 2.Txf3
 [2.Kg1 Sh3# (2...Se2# ; 2...Dg2#)]
2...Tc1+ 3.Tf1 Txf1#
0-1

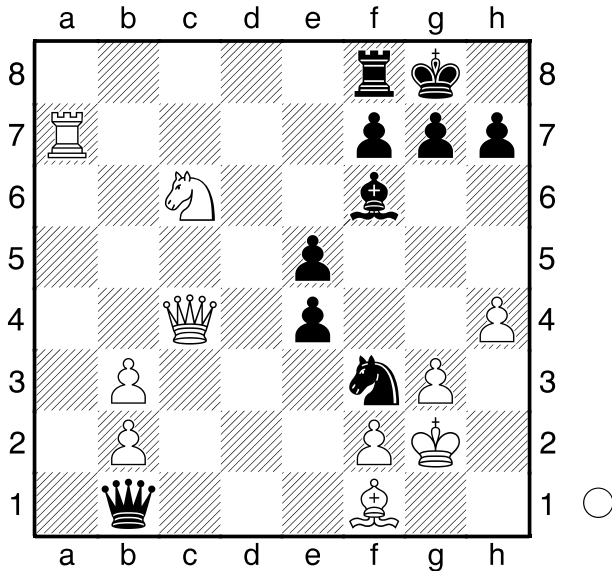
☐ Ramirez Garcia

■ Bolado

Madrid

2008

[Husemann,D]



Wie geht es für Weiß am Zuge nun weiter?

1.Dxf7+! Txf7 2.Ta8+ Tf8 3.Lc4+ Kh8 4.Txf8#

1-0

☐ Malewinski,A

■ Katalymow,B

Rostow

1976

[Husemann,D]

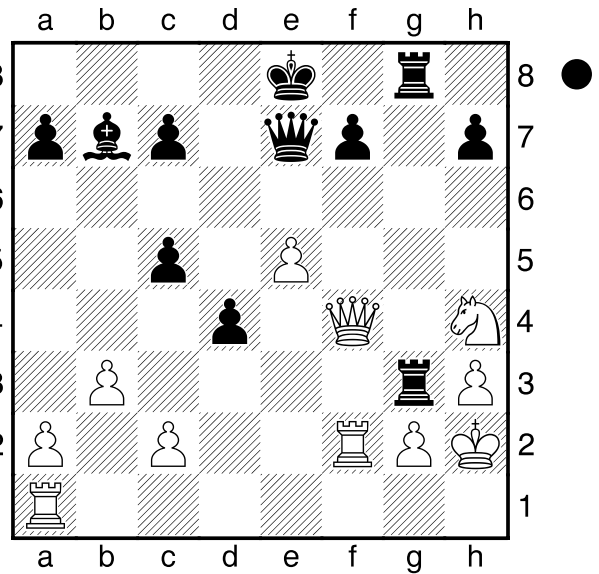
(Diagramm)

Was kann Schwarz am Zuge nun machen?

1...Dxh4! gewinnt eine Figur: 2.Dxh4 [2.Dxf7+ Kd8-+]

2...Txg2+ 3.Txg2 Txg2+ 4.Kh1 Tg4+ 5.Kh2 Txh4

0-1



C02

☐ Wenske,Hardy

1583

■ Steinbach,Jürgen

1635

Sekt oder Selters 2007 - Gruppe 051207

[Husemann,D]

1.e4 e6 2.d4 d5 3.e5 c5 4.c3 Sc6
5.Lb5 Db6 6.Lxc6+ bxc6 7.Se2 La6
8.0-0 Lxe2 9.Dxe2 cxd4 10.a3 dxc3
11.Sxc3 Se7 12.b4 Sf5 13.Tb1 Le7
14.g3 h5 15.h4

(Diagramm)

Schwarz am Zuge.

Sxg3

0-1

