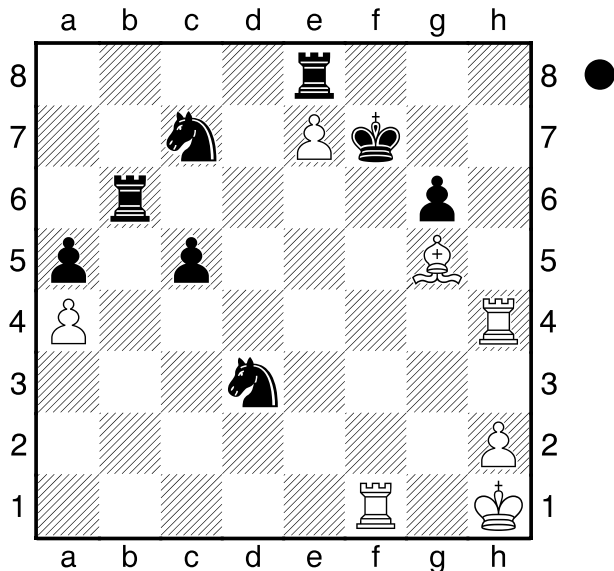


□ Sequera,J
 ■ Iturrizaga,E
 Capelle la Grande
 [Husemann,D]

2013



Wohin soll der schwarze König?

1...Kg7?

[1...Ke6 2.Tf6+ Ke5 3.Txb6 Kf5
 4.Lf6 (4.Ld2 Txe7) 4...Sd5 5.Tb3
 Sf2+ 6.Kg2 Sxf6 7.Kxf2 Txe7
 mit Remischancen für Schwarz]

**2.Lh6+ Kh7 3.Tf7+ Kg8 4.Tf8+ Kh7
 5.Ld2+ Kg7 6.Lc3+
 1-0**

□ Yang Wenyi
 ■ Liu Yi
 U16 Olympiade Chongqing
 [Husemann,D]

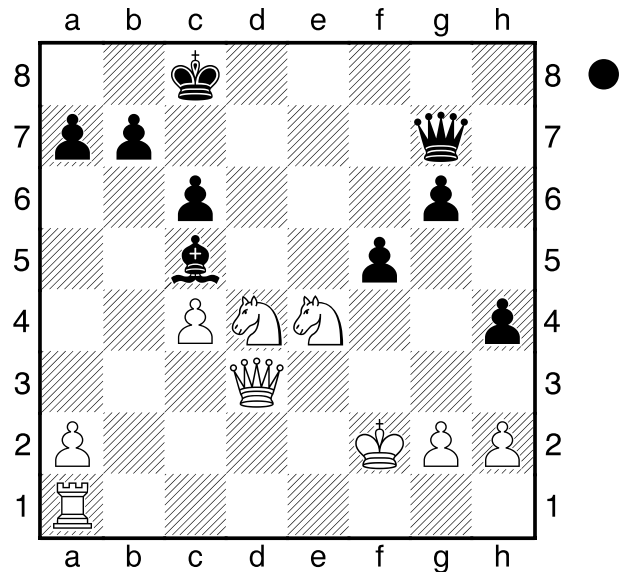
2013

(Diagramm)

Wo und wie soll Schwarz nehmen?

1...Dxd4+?

[1...fxe4? 2.Dh3+ Kc7 3.Td1 Lxd4+
 4.Ke2♞]
 [1...Lxd4+! 2.Ke2 Lxa1 3.Sd6+ Kb8



**4.Sxf5 De5+ (4...gxf5? 5.Dd8#)
 5.Se3 Ld4-+]
**2.Ke2! Db2+
 [2...Dxa1 3.Sxc5 De5+ 4.De3!]
3.Dd2 De5 4.Te1 Dxe4+ 5.Kd1♞****

□ Ischanow
 ■ Gorgiew
 Minneapolis
 [Husemann,D] 2005

(Diagramm)

Soll Weiß am Zuge auf g3 oder g4 nehmen?

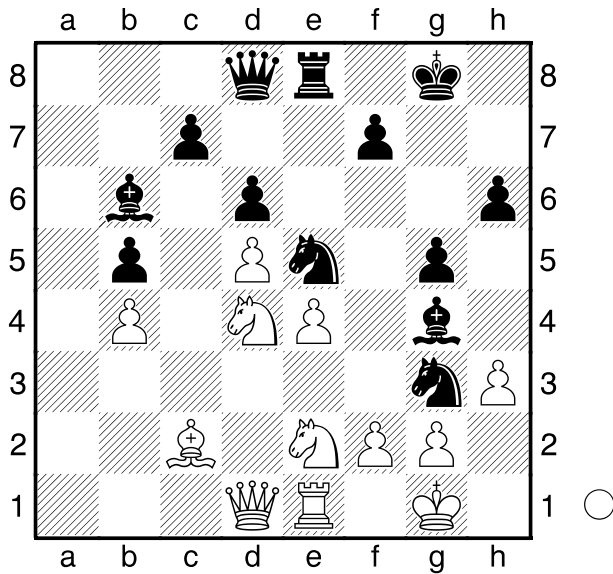
1.fxg3?

[1.hxg4! Sxe2+ 2.Txe2 Sxg4
 3.Td2♞]

1...Lxe2 2.Txe2 Df6! 3.Td2

[3.Kh1 Lxd4 4.Dxd4 Df1+ 5.Dg1
 Dxe2]
 [3.Lb1 Lxd4+ nebst Sf3+ +-]

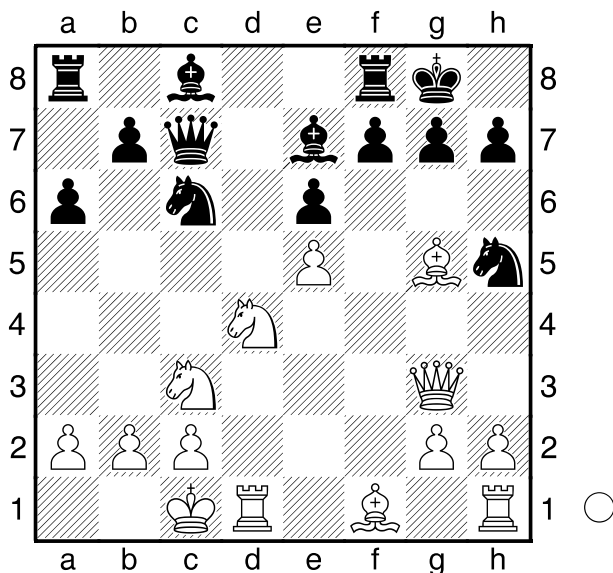
3...Sc4 4.Td3 Sb2



[3...h6 4.Txh6+! gxh6 5.Lf6+ Kh7
6.Ld3#]
4.Txh7+! Kxh7 5.Ld3+ g6 6.Th1+ Kg7 7.Lh6+ Kf6 8.Lxf8 De3+ 9.Kb1 Ke5 10.Se4 droht Lg7 nebst Matt f6 11.Sxg6+ Kd5 12.Sxf6+ Kc6 13.Se7+ Kb6 14.Sed5+ exd5 15.Sxd5+ Ka7 16.Sxe3 1-0

□ **Brkic,A**
 ■ **Nestorovic,D**
 Sarajevo 2012
 [Husemann,D]

2012



Wie soll Weiß am Zuge auf den Angriff auf seine Dame reagieren?

1.Sxc6!
 [1.De3 Lxg5 2.Dxg5 Dxe5±]
1...Sxg3
 [1...Dxc6 2.Dh4±]
2.Sxe7+ Kh8 3.hxg3 Dxe5