

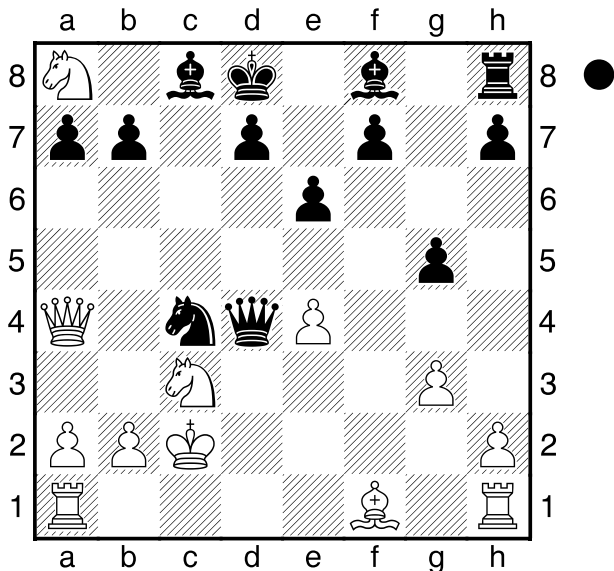
□ Nakamura,H

■ Karjakin,S

Zürich Chess Challenge

[Husemann,D]

2015



5.Sxa4 Sxf1 6.Thxf1 b5 7.S4b6
axb6 8.Sxb6 Lb7 9.Txf7 Lc6 10.Td1
Le7

[10...Ke8 11.Tfxd7 Lxd7 12.Txd7]

11.Tf3 Kc7

[11...Ke8]

12.Sxd7! Td8

[12...Lxd7 13.Tc3+]

13.Tc3

Schwarz am Zuge.

1...Se3+?

[1...Dd2+ 2.Kb3 Dxb2+ 3.Kxc4

A) 3...Lg7?

A1) 4.Db3? Dxa1 5.Lg2 Dxc3+
6.Dxc3 Lxc3? (6...b5+! 7.Kb3
Lxc3 8.Kxc3 Lb7) 7.Kxc3 b6
8.e5 ;

A2) 4.Da5+ b6 5.Dxg5+ f6
6.Db5 (6.Dxg7? La6+ 7.Kd4
Df2#) 6...La6! 7.Dxa6 f5!
8.Dxa7 Dxc3+ 9.Kb5 Dc6+
10.Ka6 Da4+ 11.Kb7 Dc6+
12.Ka6= (12.Kb8? Ke7#);

B) 3...Dxa1? 4.Da5+ Ke7 5.Kb3
Lg7 6.e5 b6 7.Da3+ Kd8 8.Lg2 ;

C) 3...d5+ 4.exd5 (4.Kd3! Lg7
5.Se2 Dxa1 6.Lg2 De5 7.Dxa7
dxe4+ 8.Ke3±) 4...Lg7 5.Db3
exd5+ 6.Kc5 Df2+ 7.Kb4 Ld7
8.Le2 Lf8+ 9.Ka5 Dc5+ 10.Sb5
b6+ 11.Ka4 Dd4+ 0-1 Ponkratow-
Sablozki]

2.Kb3 Dd2 3.a3 Dc2+ 4.Ka2 Dxa4