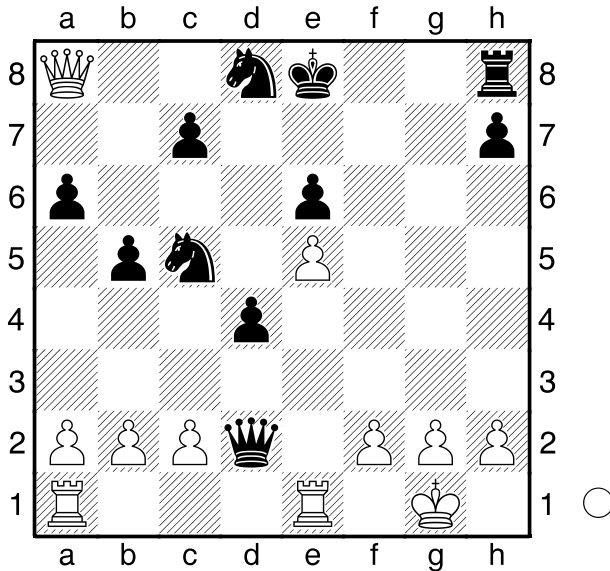


Ramirez,A
 Friedel,J
 Saint Louis
 [Husemann,D]

2014

Dxb8 23.Kxc2
0-1



Weiß am Zuge.

1.Da7

[1.Tad1 Dxc2 2.Txd4 0-0! 3.Tf1 Scb7 4.Dxa6 Dxb2 5.Tg4+ Kh8]

1...Tf8!

[1...0-0? 2.Dxc5 Txf2 3.Kh1 Txc2 4.Tg1!]

2.Tf1

[2.Dxc5 Txf2 3.Kh1 Txc2]

2...Db4 3.Tad1

[3.a3 Dc4 4.b3 Dd5]
 [3.Dxc7 Tf7 4.Dc8 (4.Dd6 Td7 5.Db6 Tb7=) 4...Se4 5.Dxa6 Dxb2 6.Tab1 Dxc2 7.Dxb5+ Td7 8.a4 Sc3 9.Tb2 De4 10.Dc4 Dxe5]

3...Tf7 4.a3 Dc4 5.b4 Sd7 6.Txd4 Dc6 7.f4 Db6 8.Dxb6 Sxb6 9.Tf3 Sc6 10.Te4 Sc4 11.Th3 Se7 12.Th6 Sg6 13.g3 Sxa3 14.h4?

[14.c3 Sb1 15.Te3 Kf8]

14...Sxc2 15.h5 Sf8 16.Kf2 c5! 17.bxc5 b4 18.Ke2 b3 19.Kd2 Tb7 20.c6 b2! 21.cxb7 b1D 22.b8D+