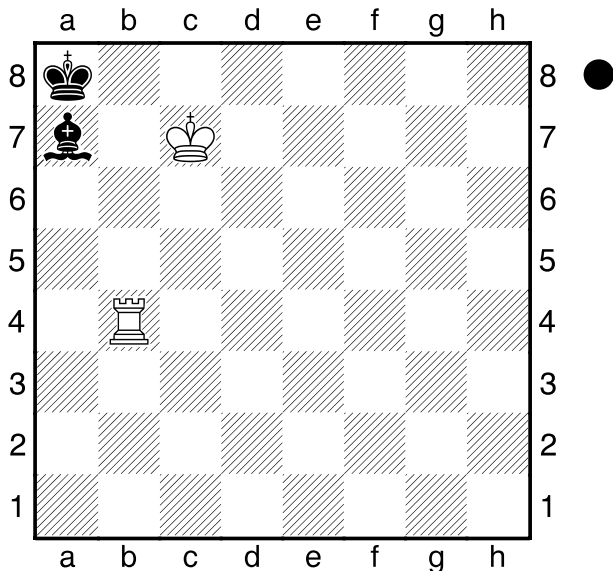


☐ **Socko,B**
 ■ **Gajewski,G**
 Polen
 [Husemann,D]

2013



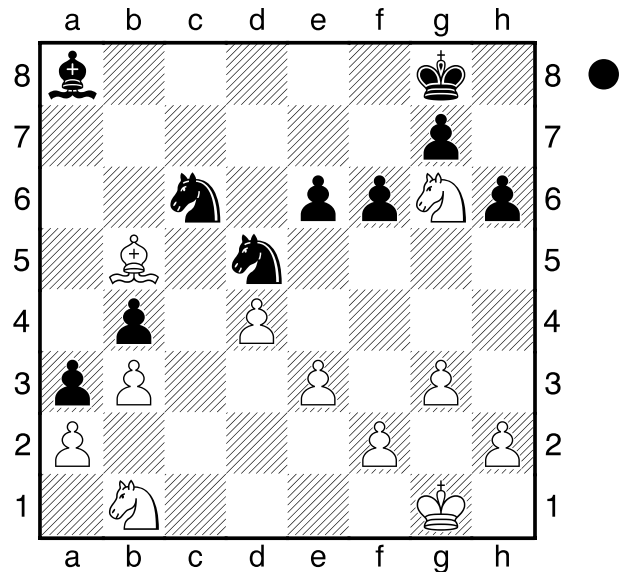
In dieser Stellung wird immer wieder ein Fehler gemacht. Wohin gehört der Läufer?

1...Lc5?
 [1...Lf2 2.Tb8+ Ka7 3.Tb2 Lg3+]
 [1...Le3=]
 [1...Lg1=]
2.Tb8+ Ka7 3.Tb5
1-0

☐ **Williams**
 ■ **Navara**
 Reykjavik
 [Husemann,D] 2013

(Diagramm)

Analysiere dieses Endspiel.
1...Sc3! 2.Lxc6
 [2.Sxc3 bxc3 3.Lc4 (3.Ld3 Sb4-+)
 3...Kf7 4.Sf4 Sb4 5.Lxe6+ Ke7
 6.Lf5 Sxa2-+]

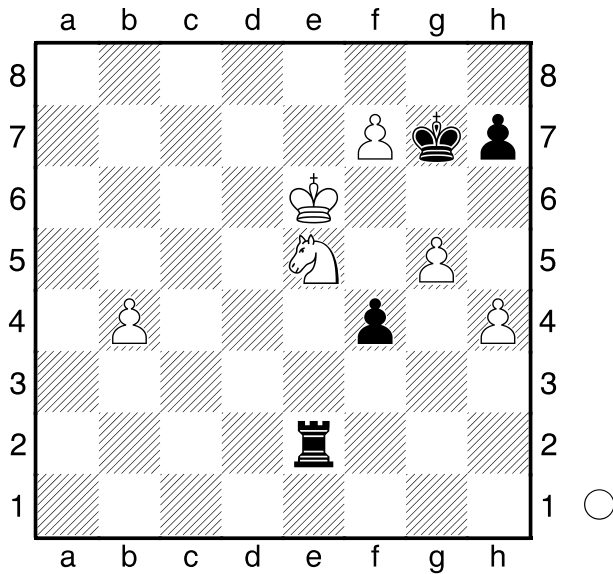


2...Sxa2!
 [2...Sxb1? 3.Lxa8]
 [2...Lxc6? 3.Se7+]
3.Ld7
 [3.Lxa8 Sc3-+]
3...Kf7!
 [3...Sc3 4.Lxe6+ Kh7 5.Sf8+=]
4.Sf4 Sc1 5.Lxe6+ Ke7 6.Sxa3
bx3 7.b4 g5
 [7...a2? 8.Lxa2 Sxa2 9.Sd3]
8.Lc4 gxf4 9.gxf4 a2
0-1

☐ **Grandelius**
 ■ **Tan Zhongyi**
 Reykjavik Open
 [Husemann,D] 2013

(Diagramm)

Analysiere diese Endspielstellung.
1.h5! alles andere verliert.
 [1.Kd5 Txe5+ 2.Kxe5 f3-+]
1...Txe5+
 [1...f3 2.h6+ Kf8 3.g6 hxg6
 4.h7+-]
2.Kxe5 f3 3.Ke6 f2 4.h6+ Kf8 5.g6



hxg6 6.h7
1-0

□ **Gunina,V**
■ **Dzagnidze,N**

Astana Frauen Mannschafts WM 2013
[Husemann,D]

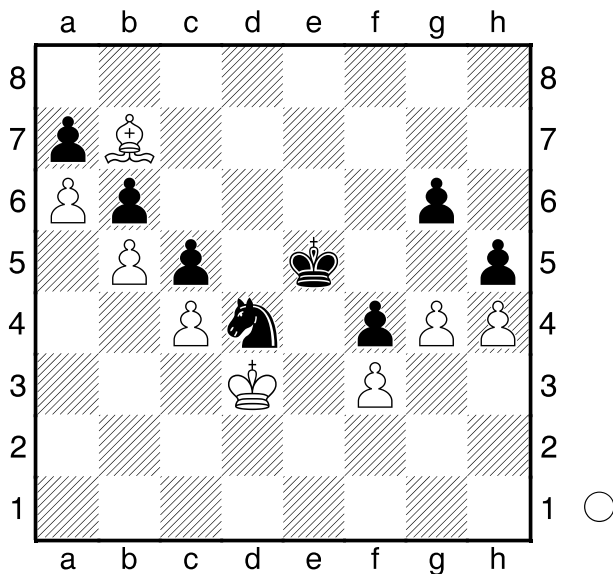
[1...Kf6? 2.g5+ Kf7 3.Ld5+ Ke7
4.Ke4 Sf5 5.Kxf4 Sxh4 6.Le4 Sg2+
7.Kg3 Se3 8.Lxg6 Sxc4 9.Lxh5
Sd6 10.f4 Sxb5 11.f5]

2.gxh5

[2.hxg5 h4 3.g6 Kf6--]

2...gxh4 3.h6 Kf6 4.Lb7 h3

0-1



Analysiere diese Endspielstellung.

1.Le4?

[1.gxh5 gxh5 2.Le4 Sf5 3.Lxf5
Kxf5=]

1...g5!