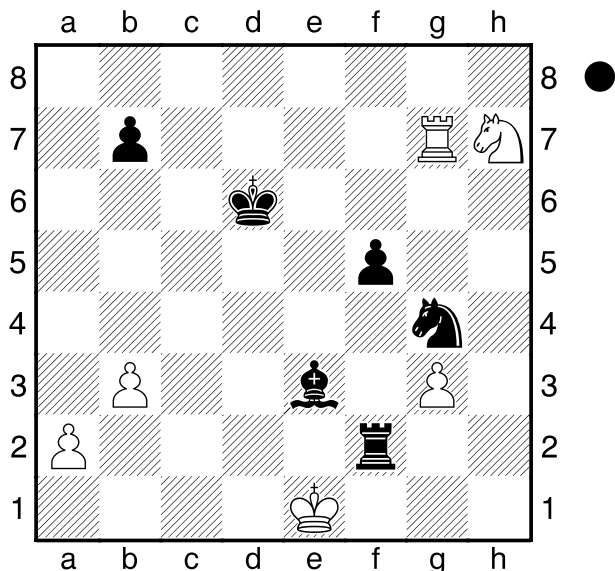


Nyberg,M
 Post,M
 Queenstown
 [Husemann,D]

2009



Wie geht es für Schwarz am Zuge weiter?

1...Ld2+ 2.Kd1 Se3#

0-1

Nikcevic
 Miljkovic
 Petrovac
 [Husemann,D]

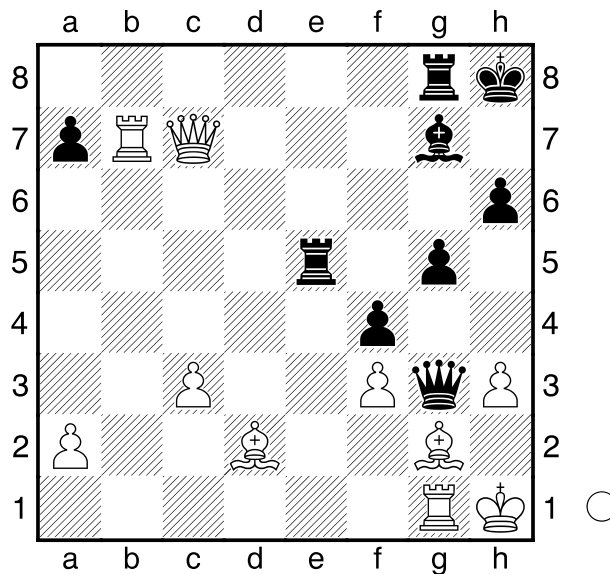
2004

(Diagramm)

Wie geht es für Weiß am Zuge weiter?

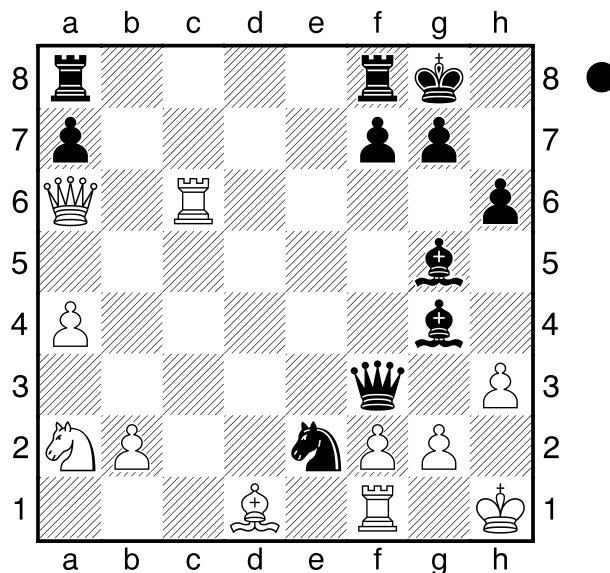
1.Dxe5! Lxe5 2.Le1

1-0



Marikova,J
 van Foreest,J
 Potsdam
 [Husemann,D]

2012



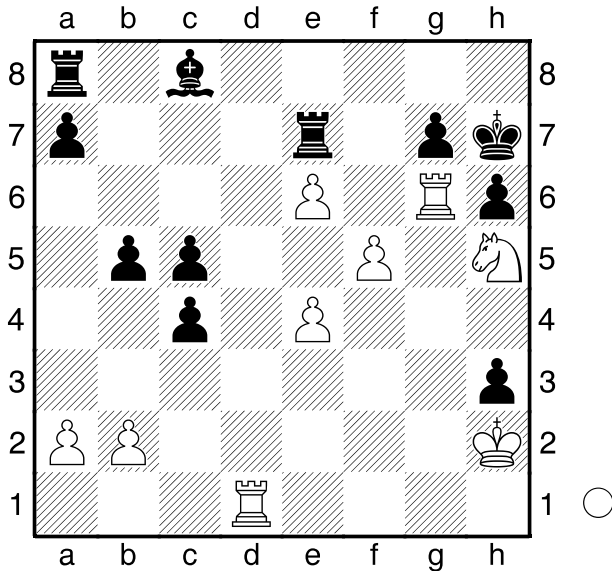
Wie geht es für Schwarz am Zuge weiter?

1...Dxh3+! 2.gxh3 Lf3+ 3.Kh2 Lf4#

0-1

□ Kriweno
 ■ Kamnew
 St. Petersburg
 [Husemann,D]

2012



Wie gewinnt Weiß am Zuge?

1.Td8!

[1.Txg7+ Txg7 (1...Kh8 2.Td8+ Te8 3.Txe8#) 2.Sf6+ Kh8 3.Td8+ Tg8 4.Txg8#]

1...Lb7 2.Txg7+ Txg7 3.Sf6# 1-0

□ Lindgren
 ■ Kristiansen
 Stockholm
 [Husemann,D]

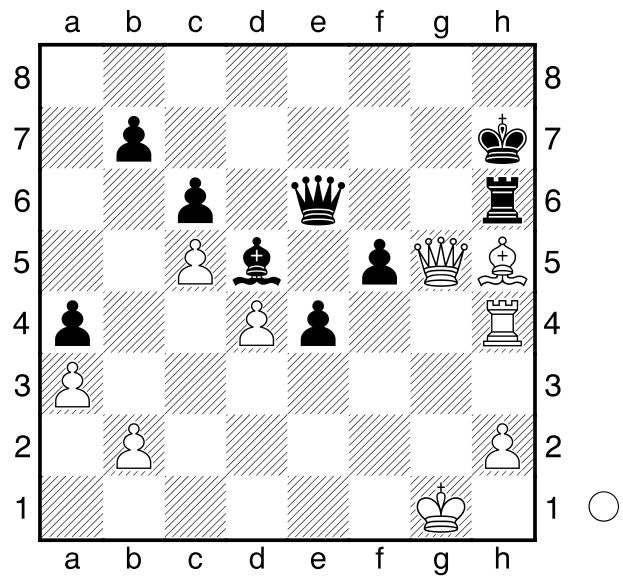
2013

(Diagramm)

Weiß am Zuge setzt Matt in 6 Zügen.

1.Lf7! Txh4 2.Dg8+ Kh6 3.Dh8+ Kg5 4.Dg7+ Dg6
 [4...Kf4 5.Dg3#]

5.Dxg6+ Kf4 6.Dg3# 1-0



C47

□ Eigemann,Julian **1468**

■ Rücker,Bastian **1380**

NRW U16 K/Mülheim-Br. (3. Bd) 03.2007

[Husemann,D]

1.e4 e5 2.Sf3 Sc6 3.Sc3 Sf6 4.d4 exd4 5.Sxd4 d6 6.Lf4 Ld7 7.Dd2 Le7 8.0-0-0 Se5 9.f3 a6 10.Le2 Sg6 11.g4

(Diagramm)

Schwarz am Zuge. **Sxf4 12.Dxf4 Sxg4 13.Kb1 Sf2 14.Lc4 0-0 15.Sf5 Lxf5 16.exf5 Sxd1 17.Txd1 b5 18.Ld5 Tb8 19.Tg1 Lf6 20.Dh6 Kh8 21.Dh5 Lxc3 22.bxc3 Df6 23.Kb2 b4 24.Dg4 bxc3+ 25.Kc1 Tb6 26.Lb3 Tfb8 27.Kd1 c5 28.Ke2 Te8+ 29.Kf1 c4 30.Dxc4 Dxf5 31.Dxc3 Df6 32.Dd2 Dxf3+ 33.Df2 Dxf2+ 34.Kxf2 Tb5 35.Td1 Tf5+ 36.Kg3 h5 37.c4 Te3+ 38.Kg2 Te2+ 39.Kg1 h4 40.Txd6 h3 41.Td1 Tg2+ 42.Kh1 Tff2 0-1**

