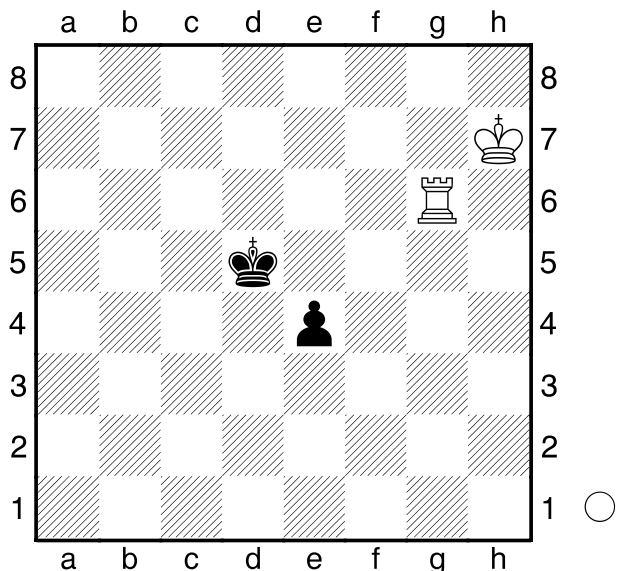


Izoria,Z  
 Shmeliiov,D  
 Chicago Open  
 [Husemann,D]

2013



Analysiere diese Endspielstellung!  
**1.Tg8?** geschah in der Partie, worauf  
 Schwarz leicht remiserte.

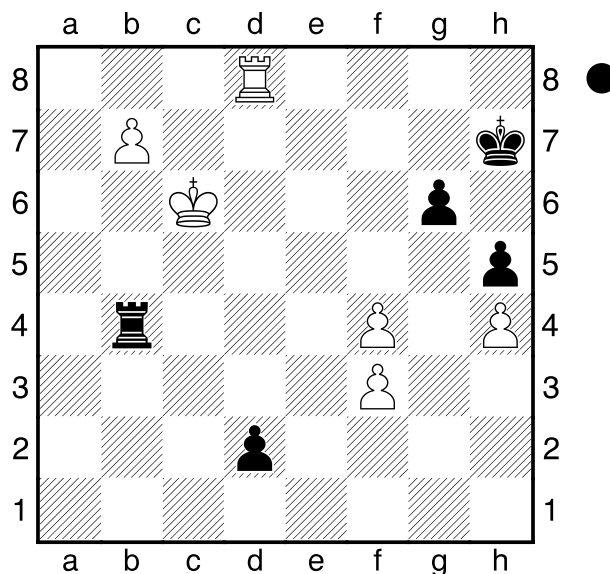
[ 1.Kh6! e3 2.Kh5 e2 ( 2...Ke4  
 3.Kg4 e2 4.Te6+ Kd3 5.Kf3+- )  
 3.Tg1 Ke4 4.Kg4 Ke3 5.Kg3+- ]  
**1...e3 2.Te8 Kd4 3.Kg6 Kd3**  
 1/2-1/2

Kamsky,G  
 Topalow,V  
 Peking  
 [Husemann,D]

2013

(Diagramm)

Analysiere dieses Endspiel.  
**1...Tc4+!**  
 [ 1...Tb2? 2.Txd2!+- ]  
**2.Kb6**  
 [ 2.Kb5 Tc2= ]



**2...Tb4+ 3.Ka6 Ta4+!**

[ 3...Tb2 4.Td7+ ( 4.Txd2? Txd2  
 5.b8D Ta2+ 6.Kb7 Tb2+ 7.Kc7  
 Txb8 8.Kxb8 Kg7 9.f5 g5!+- )  
 4...Kh6 5.f5!

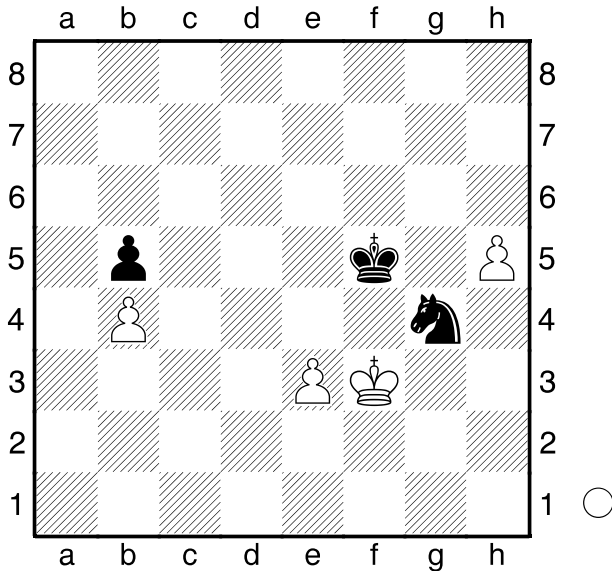
**A)** 5...gxf5? 6.Txd2! Txd2 7.b8D  
 Ta2+ 8.Kb7 Tb2+ 9.Kc8 Txb8+  
 10.Kxb8 Kg6 ( 10...f4 11.Kc7 Kg7  
 12.Kd6 Kf6 13.Kd5 Kf5  
 14.Kd4+- ) 11.f4 Kf6 12.Kb7 Kf7  
 13.Kc6 Ke6 14.Kc5+- ;  
**B)** 5...Ta2+! 6.Kb6 Tb2+ 7.Kc7  
 Tc2+ 8.Kd8 Tb2 9.f6 Txb7  
 10.Txd2 Tf7 11.Td6 Kh7 12.Ke8  
 Kg8 13.f4 Tf8+ 14.Ke7 Tb8 15.f5  
 gxf5 16.Td5 Tb7+ 17.Ke6+- ]

**4.Kb5 Ta2 5.Td7+ Kh6 6.Td4 Tb2+**  
**7.Kc6 Tc2+ 8.Kd6 Tb2 9.f5**  
 [ 9.Kc7 Tc2+ ]

**9...Txb7 10.Txd2 g5 11.Kc6 Tf7**  
**12.Td6+ Kh7 13.hxg5 Txf5 14.Th6+**  
**Kg7 15.Txh5 Txf3**  
 1/2-1/2

□ Nybäck,T  
 ■ Holzke,F  
 Bundesliga  
 [Husemann,D]

2005



Analysiere dieses Endspiel!

**1.e4+ Kg5 2.h6 Se5+**  
 [ 2...Sxh6 3.Ke3 nebst Kd4-c5xb5 ]  
**3.Ke3 Kxh6 4.Kd4 Sc4 5.Kc5 Sa3**  
**6.e5 Kg7 7.Kd6** droht Kd7 nebst  
 Vormarsch des e-Bauern. **Sc4+** **8.Kc5**  
 mit Zugwiederholung und Remis.  
 1/2-1/2

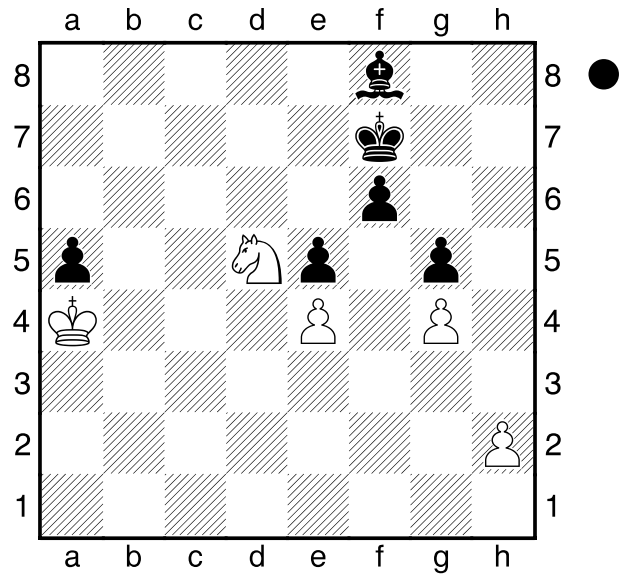
□ Wagner,D  
 ■ Raykhman,A  
 Böblingen  
 [Husemann,D]

2012

(Diagramm)

Analysiere dieses Endspiel.

**1...Lc5?**  
 [ 1...Lb4 2.Sxb4 axb4 3.Kxb4 Ke6  
 4.Kc5 Ke7 5.Kc6 Ke6 6.Kc7 Ke7  
 7.h3 Ke6 8.Kd8 Kd6 9.Ke8 Kc5



**10.Kf7 Kd4 11.Kxf6 Kxe4 12.Kxg5**  
**Kf3 13.h4 e4 14.h5 e3 15.h6 e2**  
**16.h7 e1D 17.h8D Dd2+= ]**  
**2.Kxa5 Lg1 3.h3 Ke6 4.Kb5 La7**  
**5.Kc6 Lb8 6.Kb7 Ld6 7.Kc8 Lc5**  
**8.Kd8 La3 9.Ke8 Ld6 10.Se3 Lb4**  
**11.Sf5 Lc5**  
 [ 11...La5 12.Sg7+ Kd6 13.Kf7 Ld8  
 14.Sf5+ Kd7 15.Kf8 La5 16.Kg7  
 Ld8 17.Kf7 Kc6 18.Ke8 Lc7  
 19.Ke7+- ]  
**12.Sg7+ Kd6 13.Kf7 Le3 14.Kxf6**  
**Kc5 15.Se6+ Kc4 16.Kxe5 Kd3**  
**17.Kf5**